

Historic, Archive Document

Do not assume content reflects current scientific knowledge, policies, or practices.

62.51



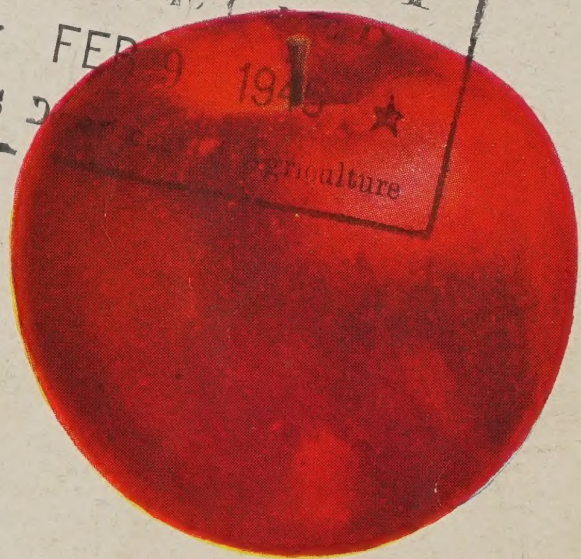
● **SPECIAL!** **Gold-Flame Honeysuckle.** A hardy climbing vine, free from insects and diseases. Blooms beautifully from spring until fall, and lasts for many years. The latest and finest in climbers. **85c each; 2 for \$1.55 POST-PAID**

GOLD-FLAME HONEYSUCKLE

1945
HANDBOOK
FOR
GARDEN
AND
ORCHARD

LIBRARY
RECEIVED

FEB 9 1945
Agriculture



RED JONATHAN

ALL-PURPOSE

HARDY APPLES

RED JONATHAN. Of unsurpassed quality, juicy, well flavored, and hardy almost everywhere. Should be in every home garden. Full description of this and other Apples on pages 8 to 11. 3 to 4-ft. tree 85c, postpaid.

YELLOW TRANSPARENT. Ripens in July. The best early Apple for fresh fruit and cooking. Hardy everywhere. Full description on page 11. Nice 3 to 4-ft. tree 85c, postpaid.

One of each, Red Jonathan and Yellow Transparent, choice 3 to 4-ft. trees, special **\$1.60**

See Index, page 6



YELLOW TRANSPARENT



**PRESIDENT HERBERT
HOOVER**

EVERBLOOMING

2-YEAR

Each, 78c

"AA" ROSES

3 for \$2.20

All Varieties

10 for \$6.90

Prepaid, safe delivery guaranteed

AMERICAN BEAUTY. Very fragrant, crimson-carmine shaded deep pink. One of the oldest and hardiest of the everblooming.

AMI QUINARD. Deepest black-red. A splendid Rose, fragrant and dainty as a cut-flower. Should be in every garden.

E. G. HILL. Brilliant scarlet, very double, and does not fade in the sun. An excellent, lasting cut-flower. Note picture on page 3.

GLORIANA. This new golden yellow Rose retains its perfect color even through hot weather. Blooms well.

GOLDEN RAPTURE. Beginning in the bud stage, this is a truly lovely Rose throughout, of a rich shining golden color, pleasantly perfumed. Very good.

GRUSS AN TEPLITZ. Bright cherry-crimson, intensely fragrant. A very vigorous and healthy grower. This is the oldest Rose that we are listing, and it still is the most freely blooming variety in existence. For lots of flowers throughout the summer, select Gruss an Teplitz.



PICTURE

DWARF ROSES and BABY RAMBLERS



GOLDEN SALMON.

Bright orange-salmon. Cluster type; 18 inches tall.

GRUSS AN AACHEN.

Dwarf. Very fine.

IDEAL. Finest dwarf red Rambler Rose. Everblooming.

KATHARINA ZEIMET. Pure white Rambler. 18 inches tall. Blooms spring to late fall.



GRUSS AN AACHEN

HARDY BUSH ROSES

Our Hybrid Tea Roses and Baby Ramblers, and in northern localities the climbing Roses, need some winter protection. Banking up with soil is the safest. For especially hardy bush Roses requiring no protection, see page 41.

HYBRID TEA ROSES

K. A. VIKTORIA. Pearly white with lemon center. A large, fully double Rose of perfect form. This lovely variety leads the list of all white Hybrid Tea Roses.

PICTURE. Note lower left-hand picture on page 2. Clear rose-pink with salmon undertones, and perfectly double.

PRESIDENT HERBERT HOOVER In the bud stage as well as when open the flower is very beautiful. Distinct copper coloring with pink and flame tints. Note picture on page 2.

RADIANCE, PINK. Bright rosy pink, very fragrant, of the large double Radiance type. The plant is a healthy, vigorous grower.

RADIANCE, RED. A splendid Rose of lovely cherry-red color, with good stems for cut-flowers. Fragrant; especially good for fall blooming.

TALISMAN. The perfect bud Rose, unusually colored in a combination of gold, apricot, pink, and carmine. A Rose-garden is not complete without this beauty.



E. G. HILL



PAUL'S SCARLET CLIMBER

CLIMBING VINES In addition to the selection of climbing Roses shown here, and taken from the hardiest available stock, for a complete list of hardy climbing vines of all kinds see pages 46 and 47.

HYBRID PERPETUAL ROSES

These are hardier than the Hybrid Teas, almost thornless, and strong growing.

PAUL NEYRON. Largest of all known Roses; often called the "Cabbage Rose" because of its immense, double flowers. Very fragrant, dark pink.

SNOW QUEEN. Pure white, very large, and perfectly double. A vigorous grower that blooms well.

CLIMBING ROSES

CLIMBING AMERICAN BEAUTY. A very popular Rose, and a good grower, with nice, double flowers of red to crimson color. This is one of the finest climbing Roses. 65c each; 3 for \$1.80, prepaid.

PAUL'S SCARLET CLIMBER. The double, intense scarlet flowers of excellent shape and good size appear in great abundance. It is a good, strong, healthy grower. No. 1 plants, 65c each; 3 for \$1.80, prepaid.

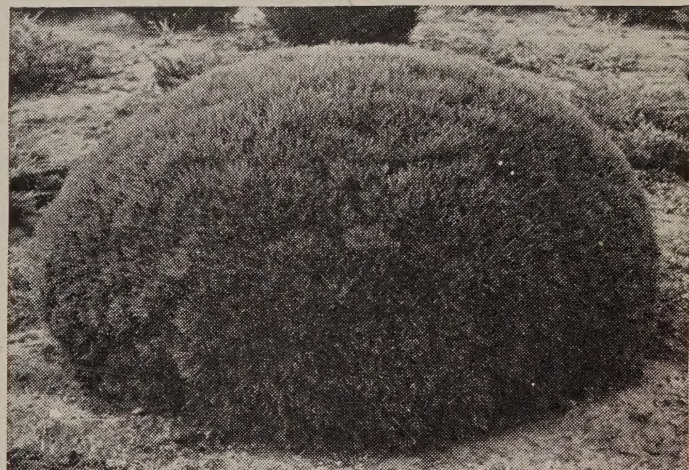
WHITE DOROTHY PERKINS. A nicely shaped double climbing Rose, appearing in pretty sprays. Particularly hardy and really the best white climber on the market. 65c each; 3 for \$1.80, prepaid.

CRIMSON RAMBLER. The hardiest of all climbing Roses, and a very strong grower. The double, crimson blooms appear in gigantic sprays. Very attractive for covering fences or any other medium and tall trellis work. No. 1 plants, 65c each; 3 for \$1.80, prepaid.

EVERGREENS



PFITZER'S JUNIPER



MUGHO PINE



SCOPULORUM JUNIPER (Sheared)



COLORADO BLUE SPRUCE

GET THIS BIG LIVE MAGAZINE

NOW!

60 MONTHS \$1.00 or 12 MONTHS 25¢

YOU will be delighted and wonder how these two great up-to-the-minute illustrated magazines, now printed together, can cost so little. It's for all — men, women, boys and girls, — clean and wholesome, no liquor advertisements.

Farm Journal and Farmer's Wife, Dept. C, Phila., Pa.

I'm enclosing \$1.00 for 60 months subscription **OR** I'm enclosing 25c for 12 months subscription

Mark the Offer You Want. Send Money Our Risk.

Name

R.F.D. Box or Street

If you live on a R.F.D. put route number above for prompt service.

P. O. State

IMPORTANT: Send coupon direct to Farm Journal and Farmer's Wife, Dept. C, Philadelphia 5, Pa., with remittance (at our risk). Offer good only in U. S.



SEE OTHER SIDE

TAKE YOUR CHOICE

60

MONTHS

\$1

More For Your Money

--Send \$1.00 for 60 months and protect against price increase and additional paper rationing. Or 25c gives you 12 big issues, biggest value ever for a Quarter.

12

MONTHS

25c

Something for the Whole Family

Farm Journal and Farmer's Wife is published monthly; big issues, new timely features; fine pictures; beautiful colored covers. Brief, easy to read; 67 years old. Largest subscription list in the world,—now held to 2,500,000 copies monthly because of paper restrictions.

UNLIKE ANY OTHER MAGAZINE

For folks who live in the Country and love the Country. Printed on fast-running presses, this Month Ahead-Magazine gets the important news to you first when it is valuable and useful.

Farm Journal section: Latest ideas in farm practice, equipment and machinery repairs, livestock, dairying, poultry, crops, orchard, garden, and everything about the farm. Latest Washington news important to farmers.

Farmer's Wife section carries new practical ideas on home decorations, fashions, fancywork, health and beauty. Canning, foods recipes tested in our own Farm Kitchen. Features on country life. Farm Women's letters, etc. Fiction by nationally known authors.

Youth section: Latest 4-H Club and FFA news, answers to youths' problems, grooming, etiquette, parties, games, movies, sports, aviation, hobbies, success stories, money-making ideas, jokes, cartoons, etc.

**LATE AND IMPORTANT "LETTER" EVERY ISSUE;
DIGESTS FUTURE TRENDS IN BUSINESS OF FARMING.**

Mail this Coupon today with remittance (at our risk), direct to Farm Journal and Farmer's Wife, Dept. C., Philadelphia 5, Pa.

Recommended by

SONDEREGGER NURSERIES

If you are now a Subscriber, you may mail or give this Valuable Coupon to a friend who is not.

Note Our New Packing and Shipping Method . . .

Due to war conditions, large Evergreens dug and shipped with ball of dirt can no longer be shipped on long distances. The shipments are on the road too long to arrive in first-class shape. Therefore, we have developed an entirely new method of digging, packing and shipping, enabling us to furnish strictly young stock, direct from the growing field, by parcel post or express. We are pricing all our Evergreens prepaid, safe delivery guaranteed. Write within five days, in case a shipment is not received in first-class shape. Replacements free.

T—Transplanted once in the nursery for better roots.

TT—Twice transplanted.

TTT—Three times transplanted; the best grade.

Colorado Blue Spruce One of the showiest Evergreens, for the lawn, parks. Needles silvery-blue. Pretty shape without later pruning. 10 to 12-inch TTT, 89c each; pair, \$1.69; 5 trees for \$3.98; prepaid.

Black Hills Spruce Extra hardy, very dense, with short dark green shiny needles. Grows to beautiful form without pruning or shearing. Never shear Spruce or Pine. 12 to 18-inch TTT, best grade, 89c each; pair, \$1.69; 5 trees for \$3.98; prepaid.

Austrian Pine As single specimen, the prettiest tall growing Pine, extra hardy, a rapid grower. 12 to 18-inch TTT selected trees, 89c each; pair, \$1.69; 5 for \$3.98; prepaid.

Mugho Pine A beautiful Dwarf Pine, growing without shearing in perfect globe shape. Dark green color. Note picture on page 4. 10 to 12-inch TTT, very choice, 98c each; pair, \$1.88; 5 for \$4.48; prepaid.

Pfitzer's Juniper Note picture, page 4. Resists heat and drought anywhere, perfectly hardy. Grows to a pretty vase shape. The ideal low grower for Evergreen foundation plantings and entrance sets. 12 to 18-inch TTT, a truly fine grade, 99c each pair, \$1.89; 5 trees, \$4.59; prepaid.

Savin Juniper An Evergreen of spreading habits, with steel-blue to green color. Does not grow as upright as the Pfitzer's Juniper. Where a slightly lower tree is wanted, this hardy strain will please you. 12 to 18-inch TTT, very good grade, price same as of Pfitzer's Juniper.

Delivery of all Evergreens in April.

EVERGREEN SEEDLINGS

	10	25	100
Colorado Blue Spruce, 6-10 in., T...	\$2.15	\$4.75	\$16.50
Black Hills Spruce, 6-10 in., T....	2.00	4.00	14.00
White Spruce, 6-10 in., T.....	1.80	3.75	12.00
Jack Pine, 12-18 in., T.....	2.00	4.00	14.00
Austrian Pine, 10-12 in., T.....	1.90	3.75	13.50
Scotch Pine, 12-18 in., T.....	2.00	4.00	14.00
White Pine, 10-12 in., T.....	1.70	3.50	11.00
Silver Cedar, 10-12 in., T.....	2.00	4.00	14.00

All prepaid, safe delivery guaranteed.

BEATRICE, NEBRASKA

Entrance Collection

2 Pyramidal Scopulorum, 18-24 Inch TTT.

2 Savin or Pfitzer's Junipers, 12-18 inch TTT. PREPAID

(Customer's Choice of Variety)

All for only **\$3.48**

Scopulorum Juniper A dense grower of pretty silvery cast, can be grown to any form by shearing, it is perfectly hardy, resists heat and drought. The landscaper's first choice for quick results. 18 to 24-inch TTT, nice trees, 98c each; pair, \$1.88; 5 for \$4.48; prepaid.

Red Cedar Juniper Can be grown in sheared form, or as a tall growing tree with spreading limbs if it is not sheared. For hardiness, heat and drought resistant, it has no rival. 18 to 24-inch TTT, strong trees, 98c each; pair, \$1.88; 5 trees, \$4.48; prepaid.

Trailing Junipers For Terraces and Low Plantings. Makes a beautiful evergreen ground-cover, and because of its great hardiness and drought resistance, can be used for bank and terrace covers where few other plants would succeed. 12 to 18-inch TTT, very good selection, 89c each; pair, \$1.69; 5 trees, \$3.98; prepaid.

Pines for Windbreaks The Austrian Pine, Jack Pine, Scotch and White Pine we are listing in the seedling section, make very good windbreaks. In the West for greater drouth resistance, many windbreaks are planted of Red Cedars.

Extra Large Evergreens Our large Evergreens, from 6 to 12 ft. sizes, can be furnished only with balls of earth. For the duration of the war we do not consider it safe to ship them over long distances. Within 250 miles of Beatrice, shipping would still be safe. Anyone interested in these larger trees, within the 250-mile radius, kindly write for price list.

Grave Cover Collection

5 Creeping Junipers

10 to 12-inch TTT, sufficient for a beautiful evergreen grave-cover. . . . Prepaid **\$2.24**

INDEX

Almond	39
Althea	38
Apples	8-11
Apricots	20
Ash	31
Asparagus	23
Barberry	36, 38
Berries	22-23-70-71
Birch	33
Butterfly Bush	39
Cannas	51
Caragana	34
Catalpa	32
Cherries	14-15
Choke Cherry	38
Climbing Vines	46-47
Cornus, Dogwood	42
Cottonwood	29
Currants	70
Dahlias	48
Elms	26
Evergreens	4-5
Firebush	41
Flower Seeds	56-57
Forest Tree	
Seedlings	26-35
Gladiola	50
Gooseberry	71
Grapes	24-25
Hackberry	31
Hedge Plants	36-37
Herbs	23
Honeysuckle	42
Hydrangea	40
Lawn Grass	68
Lilacs	37, 44
Lilies	48
Linden	32
Locust	28
Maples	27
Mock Orange	41
Mountain Ash	31
Mulberry	21, 36
Nut Trees	21
Oak	30
Olive	35
Osage Orange	37
Paw Paw	19
Peach	18-19
Pear	12-13
Perennials	52-55
Phlox	55
Plums	16-17
Poplars	29
Rhubarb	23
Roses	2, 3, 41
Seed Department	56-69
Smoke Tree	43
Snowball	41
Spirea	45
Spray Material	68
Strawberries	72
Sycamore	32
Tamarix	43
Vegetable Seeds	58-69
Waxberry	43
Weigela	40
Willows	33

Sonderregger's TERMS

Prices Are Higher Now Although most of our prices had to be advanced for 1945, in order to meet the higher cost of production and handling, our general price index today is practically in line with the pre-depression level of 1928. Prices of nursery stock are now on a normal level, and it is safe to state that they will have to remain at this level or raise further, even after the war. In no other line of goods can you buy peace-time quality, without priority, points or permits, at pre-depression rates. So even the apparently higher prices we are quoting this year are really favorable to the man who wants to plant.

Guarantee All shipments are guaranteed to reach you in first-class condition. Replacements are furnished free if a tree or shrub is not in satisfactory condition upon arrival, and if you notify me promptly. Stock that dies during the first growing season is replaced at one-half of the regular price. Claims, however, must reach us before October 1, 1945.

Stock True to Name All Sonderregger trees and plants are carefully labeled, and are true to name. However, if there should ever be an error found in the filling of an order, any tree or plant that is not true to name shall be replaced without any cost to the customer, or refund of purchase price shall be made. Claims to be sent in within 6 years from date of delivery. A stronger guarantee than most nurseries put out.

Sales Tax There is no Sales Tax in Nebraska, and no Sales Tax needs to be added to your order. However, in the event that a national Sales Tax becomes a law, such tax should be added to your order.

Remittances Money orders and bank drafts are absolutely safe to mail in a letter. Personal checks from any of our friends and customers are also accepted. Cash should be sent by registered letters only; it is not safe to send cash in ordinary letters. When the remittance is not sent in with the order, and instead the amount is to be collected on delivery (C. O. D.), one-half of the total of the order should accompany the order as a down payment. C. O. D. shipments are seldom requested; it is an expensive way of making remittances, and often causes a little delay in the delivery of live trees or plants.

Prices This garden book and prices therein quoted cancel all former price lists or quotations. All prices quoted in this book are subject to change without notice after June 1, 1945.

10% Premium on Club Orders When several neighbors club together and send in a combined order, we send along a premium, customer's choice, selected from this book. The premium to be worth 10% of the order total.

Disclaimer on Seeds I exercise great care to keep all seeds properly labeled, clean, and pure. However, I am compelled to make all seed sales under the following disclaimer: The Sonderregger Nurseries & Seedhouse give no warranty, express or implied, as to description, quality, productiveness or any other matter of any seeds they sell, and will not be responsible for the crop. Every reputable seed house is using this same disclaimer.

Attached to every shipment of trees or plants is a copy of Certificate of State Inspection.

IRIS "the poor man's Orchid"

Through recent years, Iris have become very scarce. In our growing field we have retained in each color the best varieties we have formerly listed, and in order to give quicker service under existing labor-shortage, we offer them assorted as to color. Plant Iris shallow, the corms should be covered only about 1 to 2 inches. They do well in most any soil, they are very hardy, and spread very nicely.

Lavender	Dark Blue	4 for 98c
White	Yellow	12 for \$2.70
Purple	Two-Tone	prepaid

Mixed Iris Sometimes the field labels become damaged or lost. Of such Iris we would not know the color until the following spring. We sell them as mixed colors. No. 1 corms, 6 for 55c; 12 for 98c; postpaid.



The beautiful shape of Iris, their great freedom of bloom, the very little care they require, made Iris everybody's pal.

Finest Double PEONIES

All top-size roots, 3-5 eyes each. Plant them deep enough to cover the eyes 1 inch deep.

6 Extra Choice Peonies

Edulis Superba A pretty cut-flower, er, sure bloomer. One of the very choicest mid-season Pink Peonies.

Felix Crousse Brilliant ruby-red with silvery edges. Mid-season, blooms very freely, exceptionally well shaped.

Festiva Maxima The finest white, sure - blooming Peony, very large and double, center petals tipped red.

Karl Rosenfield Striking rich crimson, a sure bloomer, pretty shape, mid-season.

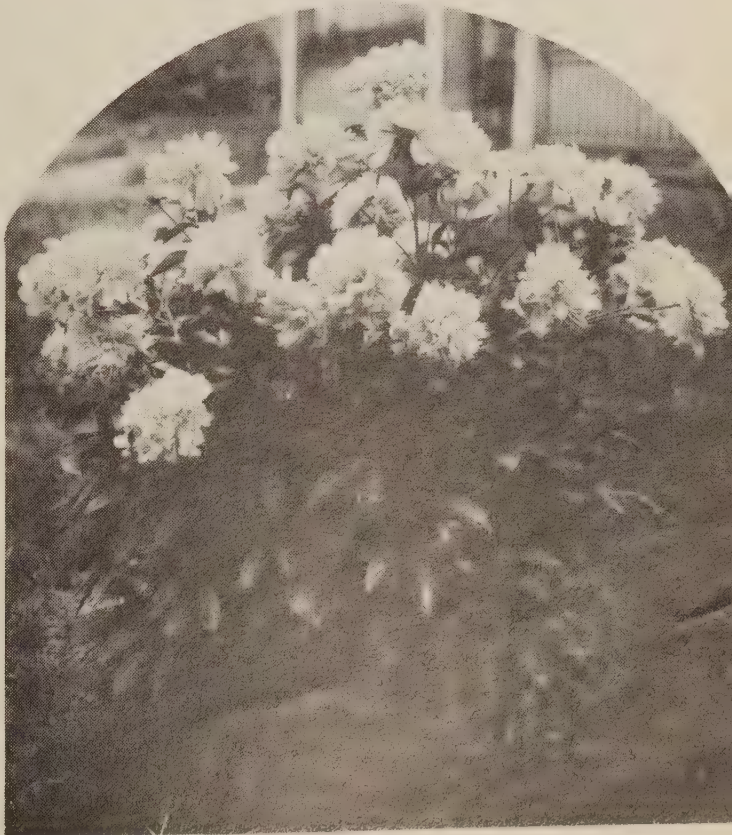
Prince of Darkness Very double, and one of the darkest Peonies out.

Sarah Bernhardt Apple - blossom pink with silvery edges on petals. Blooms nice, very showy.

Prices of all assorted Peonies listed above: 59c each; 3 for \$1.68; postpaid.

Double Peonies, Mixed These are full size roots, with 3 to 5 eyes each. Strictly double varieties, no single flowering types included. You can state the color, Red, Pink or White. We furnish them according to your choice. 45c each; 3 for \$1.18; 6 for \$2.00; prepaid.

Spring Flower Collection
2 Red 1 Pink 1 White
 All Choice Roots of Selected Double Peonies **\$1.30**
 POSTPAID
 FREE: With this collection, 4 nice Iris.





Hardy APPLES

Delicious, Yellow An apple of medium size, golden yellow. Possesses a rich flavor, resembling that of pears, quite sweet. It is one of the finest table apples you can get. Perfectly hardy here, and most anywhere in the Middle West; bears young. Ripens first week in October.

Delicious, Double Red Delicious is the best paying apple on the market, and in this improved double red strain the special dark red color develops early in the ripening season, and evenly, covering the entire apple. Due to this fact, the apple can be picked while still perfectly hard, and having its extra fine color. Hard-ripe picking makes this apple the longest keeper of any. Ripens October 10. Hardy in the Middle West, and the tree is a vigorous grower.

Grimes Golden Contains practically no acid. Combines a rich aromatic flavor with an attractive golden yellow color, and a long season of usefulness. It is one of the oldest apples in America, and still one of the very best. The tree is healthy, a good grower, and bears well, but should be pruned annually as it is inclined to grow bushy. Do not plant it north of the middle of Nebraska. Ripens end of September.

Northwestern Greening Vigorous grower, extremely hardy; does well most anywhere, especially in the North and Northwest, where few apples of such high quality grow successfully. Keeps well, fruit is large, greenish yellow when ripe. One of the best for baking. Restaurants pay premium prices for them. Ripens middle of October.

Planting Instructions

Plant Apples 30 by 30 feet apart, or plant 35 by 35 feet apart, and plant filler trees between each two apple trees. For filler trees we recommend Plums, Cherries, Dwarf Pears and Peach trees. These fillers will give you an early income from your orchard, and can be removed when the apples require all the space in later years.

WINTER

These apples ripen late, and keep well, many years of experience we have a selec

All-Red Jonathan A direct descendant of the famous Jonathan, not crossed with any other apple, therefore it possesses all of the fine flavor, juiciness and refined texture of the Jonathan. Through careful search for Jonathan of extra high color, and for several years taking propagations only from such trees, the All-Red Jonathan can finally be offered at no extra cost. Just like the old fashioned Jonathan, it is an apple of medium size, ripening end of September, and keeping in an ordinary cellar until Christmas. The tree is hardy through the corn belt, but not suitable for the extreme North. An orchard without some Jonathans just is not an orchard, and in this improved strain quality and looks have been joined.

Farm . . . APPLE

- 1 Red Delicious
- 1 Winesap
- 1 Grimes Golden
- 1 Jonathan

8 trees, all
for early

Free

With this Collection:
1 Chinese Purple Wistaria
Vine, a fine hardy climber.

Prices of All Apple Trees

Listed on pages 8 to 11.

	1	3	10
3-4 ft. trees, prepaid	\$0.85	\$2.45	\$ 7.90
4-6 ft. 3 - yr. roots, 2-yr. well branched crowns, heavy trees	1.10	3.00	9.70
5-7 ft. extra select for quick crop	1.28	3.65	11.60

These 4 to 7 ft. trees can be shipped only by freight or express, too large for mail. If your order for trees and shrubs (seeds not included) amounts to \$15.00 or more, we pay the freight.

APPLES, LATE

most of them until spring. From tion of satisfactory varieties.

Mammoth Black Twig (Paragon.)

A Russian apple, one of the very best for the Middle West. A good bearer, and the tree is perfectly hardy up to South Dakota line. Large, dark red, firm, sub-acid and juicy, keeps well in common cellars. You will find this apple highly satisfactory, and I urge you to plant more of this variety. Ripens middle of October.

Stayman's Winesap

A popular market apple, very large, striped dark red, keeps well, and is in strong demand for cooking. Ripens in October.

... Home ORCHARD

- 1 Wealthy
- 1 Duchess of Oldenburg
- 1 Red June
- 1 Dolgo Crab

4 to 6 ft. trees, bearing, for

\$7.95

By Express



A well kept orchard of Sonderegger apples, a grand sight at blooming time, and a money maker for its owner.

Old-Fashioned Winesap

A good tree for home orchard. Apples little, too small for market; quality is good, keeps well. Dark red. Tree bears heavy, perfectly hardy in the Middle West. Ripens middle of October.

York Imperial (Johnson's Fine Winter Y. I.)

This old-fashioned apple is rapidly coming back to popularity. It is a large red apple, tender and juicy. Perfectly hardy in the Middle West, also southern Minnesota and Wisconsin. I recommend a combination planting of York Imperial and Stayman's Winesap for extra heavy bearing. Ripens first week in October.

Winter Banana

Comes from Michigan; a hardy tree. Most productive and bears quite young. Rich in flavor, spicy and aromatic; flesh yellow, firm and juicy. Color a golden yellow; very attractive, and a good keeper. The vigorous, healthy growth of this tree, its extra large leaves, would even make it a desirable shade tree on the lawn. I recommend this apple for the Middle West, but not north of Nebraska. Ripens October 1.

PLANTING INSTRUCTIONS

Plant Apple trees about 2 inches deeper than grown in the nursery. This puts the bud (or graft) just above the roots about 1-inch below the surface of the soil, which is just right. Cut the ends of all roots smooth with a sharp knife, making a slanting cut. This applies to all trees and shrubs, and stimulates the formation of new roots.

Apple Trees continued on pages 10-11.



Orchards in times of war are as important as defense plants. And in times of peace orchards rank first among all agricultural enterprises for high profit producers. Plant now, help our war effort first; then, when peace returns cash in on the high returns from fruit trees.

FALL APPLES

These two apples, Anoka and the great Wealthy, ripen between the late winter apples listed on pages 8 and 9, and the early apples shown on page 11. In the Mid-West, East and Southern states they keep fairly good, usually up to early December. In the extreme North, where the season is too short for the late maturing Winter Apples, these fall apples make better keepers, and take the place of winter varieties. For our customers in the northern states we recommend Anoka and Wealthy for main crop planting.

Anoka An apple of fairly good size, yellow with red stripes. It ripens here end of August, and in the North, where this apple is one of the very best, it will ripen through the latter part of September. This is not a new apple, it has been grown for a good many years, but until recently it was little known. Anoka begins to bear very young, and this fact, combined with the very nice quality of the fruit, brought Anoka to the foreground within the last few years. We can promise you an extra hardy, good producer.

Wealthy This apple does well most anywhere, can safely be planted in the North also. It is a great bearer, in fact few varieties are so hardy and so productive. A good apple for eating, cooking, drying or pies; large, mostly covered with red, fine grained and juicy. Without this good apple your orchard is not complete. I recommend it, knowing how pleased you will be with your Wealthy apple. Ripens in September.



PLANTING INSTRUCTIONS

Fill in with good top-soil around the roots (no fertilizer to be added to this soil), and water well at planting time. Watering is the best method of packing the soil firmly around the roots. After planting apple trees should be pruned. Cut all branches back to about one-half of their length. The center-leader may be cut back a few inches.

Spray Guide

In localities where apple trees suffer from cessful orchardists follow the spray sched fruit clean. The remedies used are obtainable from your druggist.

PESTS	WHAT TO USE	Tablespoonfuls to 1 Gallon Water
San-Jose and Oyster Shell Scales and Blister-Mite.. European Red-mite	Dry Lime-Sulphur.....	9 to 11
	Spra-Mulsion	8
Bud Moth, other chewing insects and Scab.....	Dry Lime-Sulphur..... and Arsenate of Lead.....	3
	and Hydrated Lime.....	2
Codling Moth, Curculio, Bud Moth Scab, and "Frog Eye".....	Hydrated Lime.....	2½
	Dry Lime-Sulphur..... and Arsenate of Lead.....	2
Second-Brood Codling Moth	and Hydrated Lime.....	2
	Arsenate of Lead.....	2½
	Arsenate of Lead.....	2

EARLY APPLES

Early apples are hardy anywhere, hardier than any other apples, and they bear young, and extra well. However, the fruit of early apples does not keep very long after picking. For home use early apples should be planted only in small numbers unless there is a city nearby where early apples would always find a good market.

Duchess of Oldenburg An excellent cooking apple. Medium to large in size, greenish yellow with red stripes. Bears heavily. For cooking and pies it is unsurpassed, but for raw eating it is a little sour. The tree grows to large size, often used as a shade and fruit tree with a very heavy foliage. Where the tree is to be planted for shade and fruit, we recommend the larger size for planting. The apple ripens here in early August.

Early Harvest This is our earliest apple, with us here it usually starts ripening July 4th. Years ago on the Sonderegger farm the earliest fruit in orchard was Early Harvest apples and Mayflower Peaches. You must grow these trees yourself to appreciate fruit of such quality and so early in the summer.

Red June This is an old-fashioned apple, a little later than Early Harvest, an apple of medium size, yellow with red stripes, quality very good. The tree bears well. Ripening season July to August.

Yellow Transparent Fruit medium large, smooth, skin clear white, turning pale yellow when ripe. Flesh is white, fine grained, aromatic, and of splendid quality. Ripens a week to 10 days after Early Harvest. The tree is a vigorous grower, and a good bearer, perfectly hardy, beginning to bear very young, and it does well in most any location.

Prices of all apple trees, page 9.

Dolgo Dark-Red Jelly Crab. The high quality of this beautiful red crab apple, the abundance in which they are produced, and the hardiness of the tree, will satisfy you in every respect. For the finest jelly use Dolgo Crab apples. The tree bears young, and grows well. You can grow Dolgo into a very pretty shade and ornamental tree. Dolgo is hardy everywhere and will supply you with its wonderful fruit for many years.

for Apples

insect or disease attacks, succule below. This will keep the Sherwin-Williams products.

WHEN TO SPRAY OR DUST

When the trees are dormant.

1. When the blossom buds begin to show. (The pre-pink spray, when the buds are in the "Cat's-Paw.")
2. The pink spray—just before the flowers open.
3. At the fall of the petals (Calyx Spray).
4. Ten days to two weeks later.
5. Three weeks after the Calyx Spray.
6. Four weeks after the Calyx Spray.

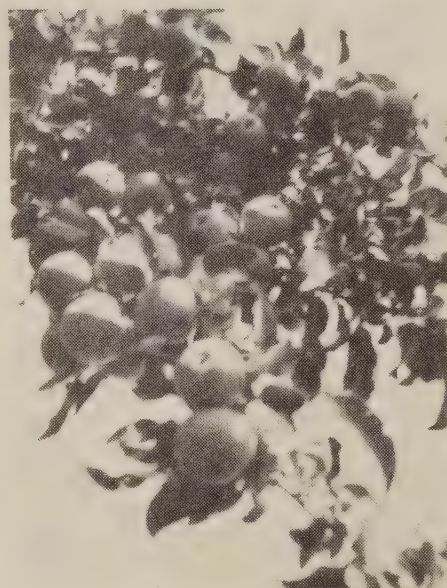
Approximately ten weeks after the fall of the petals.

Whitney



The Sweet Crab

The apple is of good size; I would say on the average as large as the old-fashioned Winesaps. It is green with red stripes, good for raw eating and for cooking. In the North this is considered a very good summer apple. Whitney, Dolgo Crab, Duchess Apple, the Superb Apricot all make very good shade trees, and it seems to me that at this time when so many old shade trees must be replanted it would be well to include a few of these trees for shade as well as fruit for planting around the home. Especially on the farm such trees would be of great value, and if you select the large size, 4 to 6 ft. trees, you will have no difficulty growing them to nice shade tree shape.



Pruning of Apple Trees

So that the trees make an even shaped crown, apples should be pruned every year or two. Shorten the longest limbs. Cut out some of the branches where they stand too thick. Cut out the "water-sprouts." This is done very early in the spring. Trees growing extra fast due to favorable soil or weather conditions, should have a light summer pruning of the new branches. This applies also to Peaches.

America's Choicest Hardy PEARS



Seckel Sugar Pears

All Pear trees listed are Standard trees (growing to large size). Sales limited to 25 Pear trees to one customer.

Prices of All Pears

	1	3	10
3-4 ft. nice straight trees, prepaid	\$1.38	\$4.00	\$12.50
4-6 ft. 3-year roots, 2-year stems, selected specimens	1.70	4.85	14.20

The 4 to 6 ft. trees are too large to ship by parcel post. If your order for trees (seeds not included) amounts to \$15.00 or more, we pay the freight.

Seckel Pear Also called Sugar Pear. Fruit is not very large, but is of finest flavor, as good as the best for table use, and for this purpose Seckel should be in every orchard. I do not recommend it for canning. Tree is a slow grower, but bears extra well, and is hardy. Can be grown wherever pears are known to succeed. Seckel ripens in September.

Bartlett—Early The pear that is first on the market, ripening end of July and August. A pear of fine quality for eating and canning, and the tree is hardy in the eastern states, the corn belt, and of course in the South.

Bosc Winter Pear Finest quality late fall and winter pear; extra large, long tapering, russet. Keeps well. Tree vigorous, and profuse bearer. Hardy anywhere in Middle West and East. Plant more of this wonderful fruit.

Pears Are Not Very Plentiful; Order Early.

PLANTING INSTRUCTIONS

Pears should be spaced at least 30 feet apart, and due to their tall, upright growth, often fit in well as shade trees, for instance, in the back yard. Planting of the trees should be done as stated for apples on pages 8 to 11. Pears succeed in poor soil, in fact they begin to bear younger if the trees grow slow due to inferior soil.

Kieffer The popular late market pear for canning. A hardy, heavy producer, that can be grown anywhere, even in the North where other pears would not be sufficiently hardy. For fresh eating the quality of Kieffer is not as good as that of the other sorts listed here, but for canning it is as good as any. For this purpose the pears are ground up and canned with lemon, orange, or quince for flavoring. You may try this method; I am sure you will like them, and find canning very simple.

Spray Guide

Where pear trees are known to have been ment following this spray guide for a year pest. Use Sherwin-Williams sprays.

PESTS	WHAT TO USE	Level Tablespoon- fuls to 1 Gallon Water
San Jose Scale, Blister Mite..... Psylla	Dry Lime- Sulphur... Spra- Mul- sion.....	9-11 8
Psylla, Slug, Scab and Codling Moth	Dry Lime- Sulphur... Arsenate of Lead..... and Nicotine Sulphate..	3 1½ to 2¼ and 1

Home Garden PEAR Collection

Ripening from July to October

1 Bartlett 1 Seckel

1 Duchess 1 Kieffer

4 fancy 4-6 ft. trees

Free: With this
Collection.
1 Hardy Rugosa
Bush Rose.

\$6.00

By Express



A branch of Duchess Pears, showing the typical bearing habit of this good pear.

Clapp's Favorite Early. It is hardier than Bartlett, does well in the northern part of this state, Iowa, Minnesota, Wisconsin and the Northeast. Tree is a good grower, and very productive. Fruit large, pale yellow with dull red and russet specks, fine grained, juicy and sweet. Ripens in August.

Lincoln Rapidly becoming popular, owing to its very good qualities. It is a large pear, yellow, flushed with bright red; fine for table use or canning. Hardy in Nebraska, anywhere in the corn belt, and the East. Your pear planting should include this tree.

Duchess of Angouleme Called Duchess Pear for short. Probably the best of the large late pears for the corn-belt, and nearly the best. Taken hard-ripe from the tree, and wrapped in tissue paper individually, Duchess will keep in an ordinary cellar for several weeks. For canning it is as good as the very best. Ripens in late September. The Duchess should be in every orchard, it is hardy, an abundant bearer, and a fine pear for all purposes.

for Pears

attacked by insects, we recommend two, to rid the trees of the

WHEN TO SPRAY OR DUST

When the trees are dormant.

1. Just as the cluster buds are opening.
2. At the fall of the petals.
3. Two weeks later.

Douglas A GOOD, BLIGHT RESISTANT PEAR. Wherever Pears have been known to suffer under blight, a disease of the wood and foliage, I recommend Douglas, which is almost completely blight-proof. The pear is large, very pretty in its color of golden yellow with a rosy blush. It is well flavored, for canning or fresh fruit, it ranks with the best. This tree is a splendid grower, extra hardy, and is a heavy producer. In most cases, the top-size I am offering will start to bear a year after planting. Douglas should be included in every planting. Ripens in mid-September. Add 10c per tree to prices quoted.

Dwarf Pears and Quince These trees are not available for spring 1945. Due to shortage of help, a number of the former special fruit types had to be discontinued. When the boys come home again, they will find plenty of work in the nurseries, and you can look forward to a longer list of fruit varieties when peace returns. In the meantime, most all nurseries concentrate their efforts on the most essential fruits for general planting.



Montmorency

Hardy CHERRIES

for Quick, Large Crops . .

Early Richmond May Cherry. The common medium red cherry, highly productive, and very hardy. Quality is good for pies and canning. An excellent tree for the Midwest and the North, bears regularly. Ripens in June.

English Morello Large fruit, very dark red, nearly black; tender, juicy, rich in flavor, and ripens rather late, quite sour. Hardy up to the middle of Nebraska and Iowa. Tree is of spreading form.

Montmorency The above photo, actually taken natural size of my Montmorency Cherry, will give you an idea of the size and heavy bearing of this tree. It is a good red cherry, not very sour, ripens about 10 days after Early Richmond. Very productive, and hardy throughout the East, Northeast and the entire Middle West. Should be in every town or farm garden and orchard.

Wragg For the West and Northwest. Fruit medium to large, dark red, and of fine quality, almost like English Morello. Tree is very hardy, a good grower, and highly productive. For western Kansas, Colorado and western Nebraska, it is one of the best cherries. Ripens in July.

PLANTING INSTRUCTIONS

Cherries do well most anywhere, except on low ground, where the soil is apt to stay very wet for days and possibly weeks at a time. The best place to plant is on a slope. The soil does not need to be rich, even poor soil produces good Cherries. Plant Cherry trees 20 by 20 feet apart, or plant them as filler trees in the Apple orchard.

Supplies of Cherry trees are limited. Have your trees reserved by ordering early. Limit, 25 Cherry trees to one customer.

Prices of All Cherry Trees

	1	3	10
3-4 ft. fine, branched trees, prepaid	\$1.35	\$3.90	\$12.20
4-6 ft., 3-year roots, 2-year tops, well branched.....	1.58	4.55	14.50
Special Grade, 11-16 inch to 1 inch caliper, choice trees for quick crop.....	1.85	5.20	16.20

Trees of 4 ft. and up are too large to be sent by parcel post. If your order amounts to \$15.00 or more (not including seeds) I pay the freight on the shipment.

Spray Guide

Cherry trees are hardly every attacked by rare cases of infection: follow spray guide

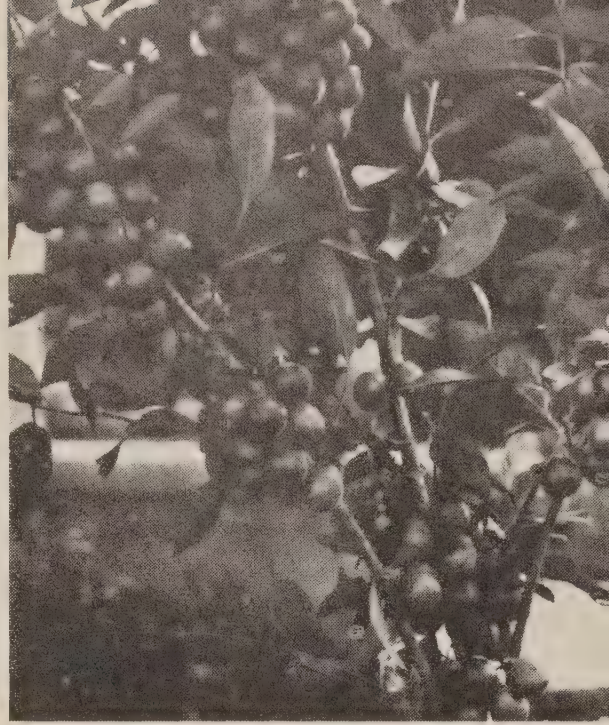
PESTS	WHAT TO USE	Level Table-spoonfuls to 1 Gallon Water
Brown Rot, Leaf-Spot, Curculio and Slug.....	Dry Lime-Sulphur... and Arsenate of Lead.....	3 and 1½ to 2½
Leaf-Spot	Dry Lime-Sulphur....	2½ to 3
Cherry Fruit-Fly or Maggot.....	Arsenate of Lead.....	1½ to 2½

SWEET CHERRIES

Not hardy in the northern states.

Black Tartarian Very large fruit of purplish black color. This is a Heart Cherry, very sweet, of superb quality. The tree is a vigorous, upright grower, immense bearer. A popular market cherry. I recommend it for the South, the Pacific states, also the Great Lakes region and the New England states. In the Middle West they are not dependably hardy, although they are grown here and there in protected places with fairly good results. A great cherry in its proper place. Ripens fore part of July. Add 10c per tree to prices quoted for other cherries.

Yellow Glass Fruit large, somewhat flattened in shape, of very beautiful golden color, firm, juicy, sweet and of fine quality. This is not a Heart Cherry, and is therefore hardier than Black Tartarian. It stood our dry summers and cold winters with fairly good results. I can recommend the tree for localities as far north as the southern half of Nebraska. Blooms late. I suggest pinching off the tips of the young branches in July to encourage branching and a dense growth for best bearing. Ripens July 1. Add 10c per tree to prices quoted on other cherries.



Note the enormous load of fruit on this limb of Compass Cherry Plum.

Special . . .

Popular CHERRY Group

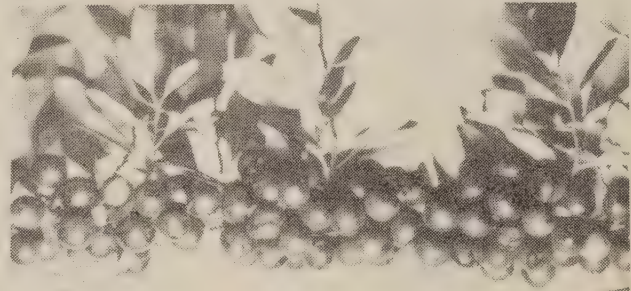
- 2 Early Richmond
- 2 Montmorency
- 1 English Morello

4-5 ft. nice trees,
9-16 inch Caliper, for.....
FREE with this collection:
2 Chinese purple Wistaria
Vines. Beautiful hardy
Climbers.

\$7.20

By Express

Compass Cherry Plum Cross between a Cherry and Native Plum, growing to a size of 10 to 12 ft., similar to a Plum tree in appearance. The fruit is larger than Cherries, small pit, in great favor for canning and preserves. It is an enormous bearer, and begins to bear very young, sometimes as a yearling. 4 to 6 ft. nice trees, \$1.28 each; 3 for \$3.65; by express.



for Cherries

insects or diseases. In few very below.

WHEN TO SPRAY OR DUST

1. Just before blooming.
2. When the petals fall.
3. Ten days later.
4. Two weeks after the fall of the petals.
5. Four weeks after the fall of the petals.

Just after picking.

As soon as the fruit flies appear. In case of rain, make additional applications.

Hansen's New Bush Cherry My original stock is of the true production by Professor Hansen of Brookings, South Dakota. A greatly improved Sand Cherry. The fruit is fair in quality and recommended for canning (preserves), of good size, small pit, very dark red. Makes a very good hedge, as it grows in low bush form. Resists extreme drought and cold remarkably well. 18 to 24 in. shrubs, 3 for \$1.35; 10 for \$3.95.

PLANTING INSTRUCTIONS

Plant Cherry trees so deep that the bud, just above the root will be about 1 inch below the soil surface, in other words plant about 2 inches deeper than grown in the nursery. Cut the ends of all roots smooth with a sharp knife just before planting. Water well at planting time. The top-branches do not require pruning, except broken branches may be removed.



Grow Our
Young-
Bearing *Hardy* **PLUMS**

PRICES OF PLUMS

	1	3	10
3-4 ft. nice trees, prepaid.....	\$1.32	\$3.85	\$12.40
4-6 ft. 2-year crowns, well branched	1.58	4.55	14.40

The 4 to 6 ft. trees are too large to go by parcel post; they are shipped prepaid freight if your order amounts to \$15.00 or more; seeds not included.

Red Wing, Minnesota Plum Yellow, overlaid with red; freestone; sweet, and of good quality. For raw eating or prepared like peaches with cream and sugar. An abundant bearer, and perfectly hardy.

Waneta The largest of all Hansen Plums, and one of the largest in existence. Red with blue bloom; very good quality. The tree is extra hardy; you can grow this plum anywhere; it bears very young, and most freely.

Hanska Bright red, heavy blue bloom, firm flesh, which has a very pleasing Apricot flavor. Being a Hansen Plum it is very hardy; bears young and heavy.

Sapa Glossy dark purple, flesh is of the same color, and is of excellent quality. Bears young and very hardy.

Omaha Native Fruit dark red with small pit, sweet, well flavored. The tree is exceptionally hardy; will do well even in the extreme North. Omaha is a sure and heavy bearer.

Opata

Golden Rod, Native The finest hardy yellow plum, sweet and tender with very good flavor. Bears young and freely.

Opata The earliest of the Hansen Plums. Dark purplish red with green flesh, and very pleasant flavor. Ripens end of July. On top of this page, note the branch taken from Opata, a sample of the bearing ability of Hansen Plums, such Opata, Sapa, Hanska, etc. Plums and most other fruit stock are very limited. You can best reserve your needs by ordering your trees early.

“Big 4” Plum Special

- 1 WANETA
- 1 SAPA
- 1 OPATA
- 1 GOLDEN ROD

4-6 ft. trees
\$5.95

Express
FREE 2 Firebush, 18-in.
Flowering Quince

PLANTING INSTRUCTIONS

Plant Plums listed on this page not less than 18 feet apart, or plant them as filler trees in the Apple Orchard. The European Plums should be planted at least 25 feet apart. Plums should be planted so deep that the bud (just above the roots) will be about 1 to 2 inches below the soil surface. Cut the ends of all roots smooth just before planting. Plums do well in any soil, can even stand a little excess moisture on low ground. For best pollenizing plant two or more varieties of Plums. They will bear heavier if pollenized by another kind.

Spray Guide

I recommend a dormant spray for all plums, which is to be applied very early in the spring, before the buds open, and should consist of 9 tablespoonfuls of Dry Lime Sulphur per gallon of water. In localities where leaf-

European Type PLUMS

PRICES OF VARIETIES LISTED BELOW

	1	3	10
3-4 ft. very nice trees, prepaid.....	\$1.45	\$3.90	\$12.40
4-6 ft. extra fine trees.....	1.58	4.60	14.50

Lombard The hardiest of the European Plums, and does well in light soil. Can be planted as far north as the middle of Nebraska, and bears well here. Fruit oval, violet red, with a yellow, juicy flesh; freestone. Ripens here end of August.

German Prune A large, oval, purple prune, freestone. Flesh sweet and pleasant flavor. It is firm, very good for drying or preserving. This tree is not hardy north of here, but is much hardier than the Italian prune (Fellenbergs), which it resembles closely in size and quality.

Shropshire Damson The famous little blue Damson Plum for eating and canning.

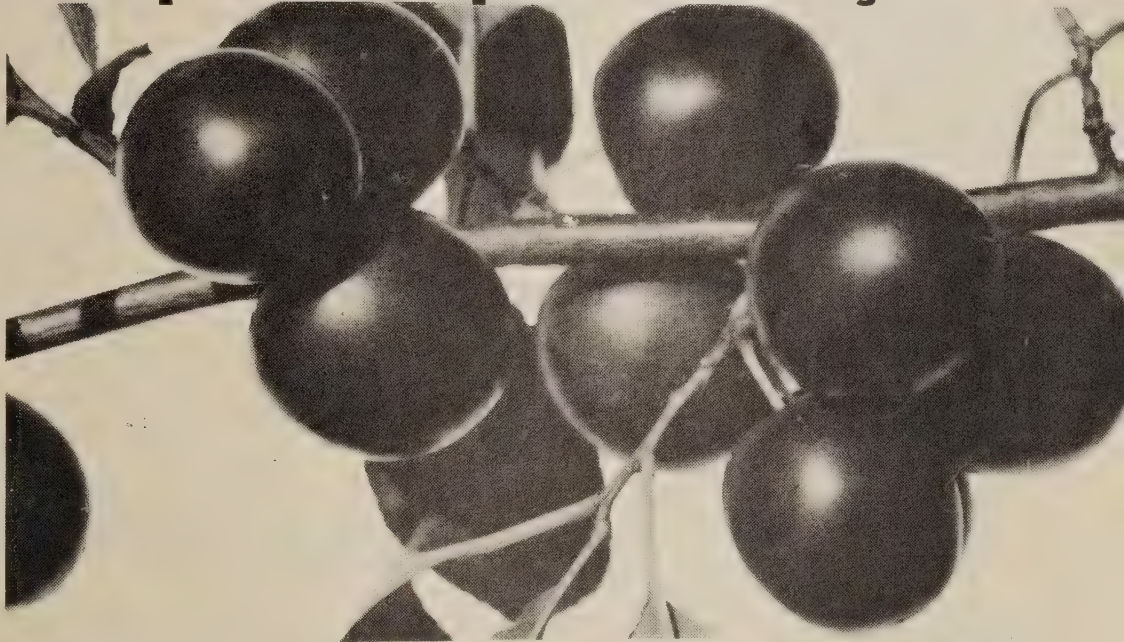


The heavy fruit-producing habit of our hardy Plums brings us many repeat orders.

Blood-Red BUSH-PLUM

Extra Hardy, Bears Heavy, Produces Young.

A wonderful shrub which produces large quantities of excellent plums, blood-red clear to the small pit (freestone) for canning, fresh fruit, or jelly. Extremely hardy, and will furnish you its first fine crop the year following planting. Nice, strong, 3-ft. shrubs, \$1.45 each; 3 for \$4.20; prepaid.



Blood-Red Bush Plums. Actual size of plums about 1 inch diameter.

for Plums

diseases attack plums, which is seldom the case, or where the ripening plums are attacked by worms, apply the spray as recommended for Cherries against Leaf-spot, Curculio and Slugs, see pages 14-15.

PLANTING INSTRUCTIONS

At planting time cut back the limbs of your plum trees to about one-half of their length. The leader (center branch) can be cut back a few inches. In good ground plums will grow almost too fast, and it is therefore a good plan to give them a summer pruning the second year. Early in July cut back the new branches a few inches to stop them from growing too much. This will also increase the bearing ability of the tree for the following year.



Champion, the high-flavored, juicy, white-meated Peach.

Hardy

Time-Tested
for Quality
and
Production

Champion Extra hardy. Freestone. Good medium to large size, creamy white with red cheek. Excellent flavor, sweet, rich and juicy, white meated. Champion is one of the hardiest peaches you can grow. I recommend it highly for the Middle West, and anywhere on the northern edge of the peach belt. Ripens in August.

Early Elberta Freestone. A little larger than Elberta, in other respects the same, except that it ripens almost two weeks earlier. Very good for southern Illinois, Indiana, southern Missouri and Kansas, but not hardy north of there.

Elberta Freestone. The best known market peach, large yellow with red cheek; flesh yellow, firm, good quality. Not hardy in Nebraska. Does well in the South, in Ohio and Michigan. Ripens in August.

Golden Jubilee Yellow - Meated. Freestone, of fair size, good quality and flavor. This is a rather new variety, and is much hardier than the Early Elberta, and ripening just slightly later than the Early Elberta. We recommend Golden Jubilee through the corn belt and as far north as any of the other peaches, where it will be the only yellow-meated early freestone peach. No extra charge for this variety.

PLANTING INSTRUCTIONS

Plant Peach trees not less than 20 ft. apart, or use them as filler trees between Apples. Even poor soil produces good peaches, in fact, the slower growing peach trees in poor soil will live longer than fast growing trees in good soil. Plant the trees from 1 to 2 inches deeper than grown in the nursery, depending on the size you buy. Use just ordinary soil to fill in around the roots at planting time, add no fertilizer to this soil, and water well to settle the soil properly.

Prices of Peach Trees

Sales limited to 25 trees to one customer.

	.1	3	10
2-3 ft. well rooted, prepaid	\$0.75	\$2.10	\$ 6.50
3-4 ft. branched, prepaid	.98	2.75	8.80
4-6 ft. strong, branched trees	1.25	3.60	11.45

Trees of 4 ft. and up are too large to be sent by parcel post. If your order amounts to \$15.00 or more (not including seeds), I pay the freight on the shipment.

Belle of Georgia Freestone. Very large, white with red cheek, flesh white and firm with excellent flavor. Hardy most anywhere south of here. Ripens early in August.

Mayflower Semi-Cling. This and Early Elberta are the earliest peaches you can have. White meated, good size, and fine quality. Gets a nice red color even before fully ripe, blooms late and is fairly hardy. Ripens early in July.

Spray Guide

If you have had trouble keeping your the trees for a couple of seasons, using

PESTS	WHAT TO USE	Level Table-spoonfuls to 1 Gallon Water
San Jose Scale...	Dry Lime-Sulphur..	9 to 11
Peach Leaf Curl.	Dry Lime-Sulphur..	9
Brown, Rot, Scab, Curculio..	Mulsoid-Sulphur.. and Arsenate of Lead.. and Hydrated Lime.....	2½ to 3 1 5

PEACHES

"Homesteaders"

PEACH COLLECTION

1 Belle of Georgia 1 Polly
1 Champion 1 J. H. Hale

All nice 4-6 ft. trees.

For Only **\$4.75** By Express

FREE 1 Gold Flame Honeysuckle



J. H. Hale Freestone. Large size, beautiful rich orange yellow color with carmine cheek, smooth; a very good peach. Does well as far north as the middle of Nebraska, and anywhere south and east of here. Ripens end of August.

Heath Cling Clingstone. Best for pickles. Large, round, white-meated, juicy, highly flavored. Hardy here, but not in the North. Ripens in October.

Polly Freestone. One of the surest bearers. Claimed to be even hardier than Champion. Medium size, good flavor, white-meated, ripens in August. Add 10c per tree.

Our Peach trees begin to bear at an early age, and they don't require the best soil. In fact, Peaches do better on medium rich land. On slopes or for quick producing filler trees in the orchard, include Peaches.

for Peaches

peaches free from worms, spray Sherwin-Williams sprays.

WHEN TO SPRAY

In spring before the buds begin to swell.

1. When 75% of the shucks have fallen.
2. Two weeks later.
3. Four weeks before picking.

Paw Paw (Asimina). A small tree with purple and whitish flowers and handsome foliage. The large fruit, banana-shaped, is edible and improves by cultivation. This has been a native tree in Nebraska, Kansas and most Midwest states, and should be replanted. Of value for ornament as well as for the fruit. Nice 3 to 4 ft. trees, 95c each, postpaid.

PLANTING INSTRUCTIONS

Pruning of Peach trees is an important matter. At planting time cut back all branches to within 1-inch from the main stem. This produces a new, dense crown. As soon as the new branches are about 16 inches long, cut them back to 1 ft. length. During the following years give fast growing peach trees a summer pruning early in July, cutting off just the very ends of all new branches. This makes stouter branches, a stronger crown, and increases fruit production for the next year. Never cultivate around Peach trees after July.

This is not the scene of a crime, or a fire. No. Just Ted, bringing a load of fruit to town at a late hour of the night. But the market was there. As fast as he could move the fruit out of his truck and make the change, it was sold. Only trouble was, he did not have enough.



In case you are in doubt about the future of fruit growing, look at these figures:

U. S. census on apple trees in commercial orchards shows:
 1930.....88,848,970 trees
 1940.....58,152,100 trees

And at this time the figure would be way lower yet. Other fruit varieties declined accordingly. Fruit prices rose accordingly, and are due for further rises.

These photos and figures are only for the man who thinks and figures, and for him they are a better tip than any he can get on the race-track.

APRICOTS

Superb Freestone. A very hardy Apricot, and since years the favorite with most fruit growers. The fruit is as good as the finest, the tree is an abundant bearer, and it is hardy except in the very extreme North. This tree also makes a very nice, well shaped shade and ornamental tree.

Chinese Golden Apricot This is considered the largest of all Apricots, and its flavor compares favorably with the best. But even more important is the perfect hardiness of this tree, and its great bearing ability. These features combined speak strongly for the tree, and will make it a valuable addition to any orchard.

Prices of Budded Apricots

Sales limited to 10 trees per customer.

	1	3	10
2-3 ft. trees, prepaid	\$1.00	\$3.00	\$ 9.50
4-6 ft. branched trees.....	1.70	4.85	15.90

Manchurian Apricot Produced by Prof. Hansen of Brookings, S. Dak., special breeding for drought resistance, and greater hardiness, without affecting the splendid quality of Superb. These trees can be grown anywhere in the North, and, of course, will also give excellent results in other states.

Seedling Apricots These are not budded, but will produce a good quality of fruit, on the average almost as good as the Superb Apricot. They are extra hardy. Planted 8 ft. apart in the row, they will make a wind-break and produce good fruit. Supply limited. Maximum sale per customer, 25. Price of 12 to 18-inch Seedling Apricots: 3 for 55c; 10 for \$1.55; 25 for \$3.50; postpaid.

PLANTING INSTRUCTIONS

Apricots should always be planted in pairs for best pollenizing at blooming time. For that purpose the trees may stand 100 to 200 feet apart without affecting cross pollenizing. They make satisfactory lawn and ornamental trees due to their nice foliage and freedom from insects. Plant the trees about 2 inches deeper than grown in the nursery, any soil satisfactory. Prune branches back to about one-half their length. The lower branches can be removed gradually, if a tall stemmed tree is desired. Spraying hardly ever becomes necessary.

NUT TREES



Sieboldi Walnut

Butternut, White Walnut One of the finest native trees, and often planted for a shade tree. Hardy as far north as South Dakota. The nuts are large, long, quality good. 12 to 18-inch seedlings, 3 for 50c; 10 for \$1.40; prepaid.

Hazelnut This is the old fashioned hardy type producing nuts of medium size. An upright growing bush, very useful for hedges or screens, or to make up the lower growth of the windbreak. Sometimes included in ornamental plantings for tall growth. 18 to 24 inch, 10 for 95c; 25 for \$2.00. 2 to 3 ft. shrubs, 3 for \$1.00; prepaid.

Sieboldi Walnut Makes a very pretty tree which bears young and abundantly. It is hardy along the east coast states and from there west through southern Illinois, Indiana, southern Missouri and Kansas. There are some of them growing in Nebraska, but they are not sufficiently hardy to be profitable in this state. The nuts come in clusters, they are heart-shaped, easy to open, contain a nut meat of high quality. For the localities recommended this tree will be most satisfactory and should be planted much more freely. 2 ft. nice trees, \$1.25.

Stuart Pecan Hardier than the Common Pecan, and can be grown as far north as southern half of Missouri, southern Illinois and Indiana. The nuts are large, thin shelled, the quality of which is very good. Plant them for home use and market. 2 ft. grafted trees, \$1.50 each, prepaid.

Black Walnut A beautiful large tree of rapid growth, especially on bottom land. The nuts, although hard-shelled, are of very good quality. Besides being a very good shade and ornamental tree, the wood of Black Walnut is most valuable. 6 ft. well shaped trees, for shade, ornament and fruit, \$2.10 each, by express.

Russian MULBERRY

This is one of the most useful trees that grows, and is hardy as far north as northern Nebraska and Iowa. Grows a large spreading crown, and produces enormous quantities of berries which are often used for canning. On the farm it is a very valuable tree for hedges, shelter belts, for posts and in the wood-lot. For these purposes I recommend planting the 12 to 18 inch size as offered on page 36. The tree grows fairly fast, and is a long-lived tree. The further advantage of the Russian Mulberry is found in the fact that it attracts song-birds. Bird-lovers will find special satisfaction in this tree. For shade and ornament plant our 3-4 ft. nice trees, \$0.75 each





from
BERRIES
 you get quick
 returns . . .
 also see our
 choice
 assortments
 of
Raspberries
 and
Blackberries
 page 70-71

●
 This photo of Boysenberries shows the berries only one-fifth of their natural size.

Boysenberry Berries $1\frac{1}{2}$ to 2 inches long, about three times the size of regular Blackberries, black, juicy, and of a flavor unexcelled by any other berry. This is a cross between Blackberry, Raspberry and Loganberry, rapidly becoming the best paid berry on the market. Hardy and drought resistant. Produces a vigorous growth, and fruit of finest quality in most any good garden soil. Permit the young growth to lay on the ground where it can be covered in early winter with tomato tops, leaves or straw. In the spring tie the vines up to stakes or a 3-wire fence, for bearing. After picking the berries cut out the vines that have produced the crop. Repeat the same method every year, always leaving the new vines for next year's crop on the ground. The plant is free from insects or disease, and with the culture described above, anyone can have lasting success with Boysenberries. Nice, well rooted plants, 3 for 55c; 10 for \$1.60; 25 for \$3.70; prepaid to you.

Thornless Boysenberry Same as the regular Boysenberries in size, quality of the fruit, growing habits, and is easier to work with, because the plant does not make thorns. Wherever the winter is expected to bring below zero temperatures, the young vines on the ground should have a good mulch, about 6 inches deep, of leaves or straw. This mulch must not be applied too early in the fall. Wait until heavy freezing weather sets in, because Boysenberries are in the habit of becoming dormant very late in the season. Every few years Boysenberries should have some fertilizing. Applying well rotted barn manure around the plants in early spring, and working it in the ground, will bring splendid results. Plant all Boysenberries about 5 ft. apart in the row. Our **Thornless Boysenberries**, nice well rooted plants, 3 for 95c; 10 for \$2.85; prepaid to you.

Dewberry The improved Lucretia Dewberry is an extra good producer, and has a nice large berry. Grows on the ground, where the vines can be covered over winter, in northern localities. The oldest vines are usually removed when the berries are harvested. The remaining young vines keep up nice production the following year. 3 plants for 45c; 10 for \$1.20; prepaid.

Youngberry This new berry has been introduced in recent years. The plant is a vigorous grower, and a heavy bearer; it is hardy in the Middle West; however, I recommend a light cover of straw over winter for best results and extra good bearing. The berries are as large as Loganberries, purplish-black; in quality they resemble Raspberries. Nice plants, 3 for 50c; 10 for \$1.35; 25 for \$2.95; postpaid.

Hardy HERBS

The following are the most frequently needed herbs. They are hardy, stay in your garden for many years, and continue to supply your kitchen for a long time, beginning the first year.

Sage The best hardy kind for seasoning. This is the true Holt's Mammoth Sage, furnishing large quantities of leaves which are dried, and used for their aromatic value. Per plant, 35c, postpaid.

Chives A plant of the onion family, producing very thin tops, which are cut and used for seasoning in green form, like Parsley. Per bundle, 30c; 3 for 75c; postpaid.

Peppermint A very useful hardy herb, highly aromatic. Per plant, 25c, postpaid.

Horseradish Selected cutting for planting. The best all-white variety. 10 for 50c; 50 for \$2.20; prepaid.

RHUBARB (Pie Plant)

Giant-Stalk Victoria For years this has been the heaviest producing Rhubarb for the home-garden. Producing heavy, thick stalks, 14-inch average length, in two heavy bearing seasons, spring and fall. Quality of this Rhubarb is better than any of the older sorts. Victoria Rhubarb should be planted on moist ground, preferably in the shade, where it is not so apt to make seed stalks. Our heavy roots will produce a good crop the first year already. Heavy roots. 3 for 55c; 6 for 95c; 12 for \$1.75; prepaid.

Juneberry or Service Berry

A good substitute for the large Swamp Huckleberry or Whortleberry, which it resembles in appearance and quality. Fruit comes in clusters, reddish-purple in color, changing to bluish-black when fully ripe. Flavor a mild, rich sub-acid; excellent as a dessert fruit or canned. It is extremely hardy, not thorny, grows bushy to a height of 7 or 8 feet. Would make a nice ornamental shrub also, and is often used for that purpose, as it is very showy when in full bloom. Juneberry makes no fiber-roots; it is not a fast grower, but lasts for many years. I would call Juneberry a desirable combination flowering and fruit plant. 40c each; 3 for \$1.00; postpaid.

Dwarf Blueberry For this plant you need a low wet place, shaded, where the soil usually turns sour and few, if any, other plants would grow. Such a spot is just the right place for the Dwarf Blueberry; it increases rapidly, making a pretty dense growth of heavy producing plants about 15 inches high. I do not recommend this plant for dry land or sunny places. The berries are of good size, black with a blue bloom, very sweet; excellent for fresh dessert fruit, drying or for canning. Perfectly hardy, even in the extreme North. Plants are scarce, order early. 3 for \$1.00; 10 for \$3.00; postpaid.

New Seedless Rhubarb

McDonald Another heavy producing new Rhubarb. For pies and sauce one of the very finest, and the plant is seedless. McDonald cooks up pink or light red, although the stalks are almost green. Its fine flavor is unsurpassed. Highly recommended for the home garden. No. 1 roots, 65c each; 3 for \$1.75; postpaid.

Ruby Red The only Rhubarb on the market which combines good growth, fine flavor with red color of the meat. The stalks do not run as heavy as those of McDonald or Giant Victoria, but appear in greater numbers. If you are looking for a true red-meated Rhubarb, this new and improved type will please you in every respect. No. 1 roots, 65c each; 3 for \$1.75; postpaid.

New Paradise ASPARAGUS

A great improvement over all former varieties. Rust-proof, bears larger, thicker tips of finer quality than anything that has ever been produced in Asparagus. Plant more of this permanent hardy vegetable. Take advantage of these new low price rates for strictly first class young plants which are sure to start.

10 for 65c; 25 for \$1.20; 100 for \$4.00; postpaid.

How to Grow Asparagus

Manure the ground heavily, using well rotted barn manure. Make a trench 8 to 10 inches deep. Have 4 inches of good rich ground on the bottom, spread the roots out evenly and fill in about 3 to 4 inches of soil. Leave the rest of the trench lay open for the first summer. Let all stalks grow the first year. Fill the trench up in the fall of the first year. Let several stalks grow on each plant the second year. In the third year allow one stalk per plant to grow up, cut all others as soon as they appear above the ground. Cultivate occasionally. Plant 1 ft. apart in the row, the rows 3 ft. apart.

Hardy GRAPES

Sonderegger plants are well known everywhere, for young bearing and heavy crops.

Beta, Black Hardy, rapid grower, for windmill cover and arbor planting. Wherever you plant Beta its sturdy, fast growth, and its perfect hardiness will please you. Beta will make quick shade over tall trellis work, arbors, or will cover windmill construction with its good, healthy, clean foliage. Beta produces enormous quantities of grapes, close-set medium size clusters, black in color, highly flavored; one of the very best for very dark colored juice. Make use of all tall structures, fences, etc. Cover them with Beta Grapes for better looks, shade and plenty of fruit. 2-year No. 1 strong grape vines, 45c each; 3 for \$1.20; 10 for \$3.40; prepaid.

Agawam, Red Berries large, in loose clusters, of dark red color, skin thick and fleshy. A juicy, highly aromatic table grape which ripens with Concord. Needs no winter protection in the corn belt. Agawam deserves a place in your garden. Strong 2-year old plants for quick production, 45c each; 3 for \$1.20; 10 for \$3.50; 25 for \$8.00; prepaid.

Sheridan, Late, Black This is the first year we have this grape to offer, and we are getting the plants from the originator, strictly No. 1 plants, true to name. Sheridan ripens a week later than Concord, when the weather begins to get cooler, and the berries ripen evenly to a blue-black color, and a sweet rich flavor. Bears extremely heavy, and is hardy through the corn belt, in the East and South. We recommend a winter protection in the extreme north. Other nurseries have sold Sheridan through the Midwest for several years and have received many reports of splendid results. Strong plants for quick bearing, 58c each; 3 for \$1.50; 10 for \$4.50; prepaid.

Spray Guide

Where Grape vines suffer from insects or liams Pestroy as recommended below.

PEST	WHAT TO USE	Level Table-spoonfuls Per Gallon Water
Black-Rot Mildew..... and Berry-Moth	Pestroy..	9½



Grape vines make very good covers for Arbors and other trellis work.

Niagara, White By far the most popular white grape. In hardiness, size of clusters and berries it equals the well known Concord. Berries pale yellow, when fully ripe very sweet and delightfully flavored. Our two-year old heavy plants are highly productive and will start bearing the year following planting. 45c each; 3 for \$1.20; 10 for \$3.50; 25 for \$8.00; prepaid.

HARDY GRAPE COLLECTION FOR THE FARM

3 Agawam 3 Niagara
6 Concord

All selected 2-year No. 1 plants, for

FREE: with this Collection, 2 Beta Grapes.

\$3.98
PRE-PAID

PLANTING INSTRUCTIONS

Our two year old Grape vines are exceptionally well rooted, and should be planted in large holes to allow ample room for the roots. Spread the roots out and fill in with good top-soil, no fertilizer to be added. Plant so deep that the vines will part at the surface of the soil. Water well to settle the soil properly. Right after planting cut each vine back to four eyes per vine.

Fancy "Big 6" Grape Collection

2 Caco 2 Portland

2 Fredonia

\$2.50
PRE-PAID

All 6 extra strong 2-year No. 1 Grapes, for only

Caco The grand table grape. A fancy grape of finest quality. Berries extra large, sweet, juicy, with a most pleasing flavor. Coming in well-shaped clusters of light red or amber color it is a most attractive looking fruit. Caco is perfectly hardy everywhere except the extreme North where it needs a little winter protection. The berries become sweet two weeks before they color up. Caco should be in every garden, it produces well, and there is nothing to take its place for good eating grapes. 2-year-old No. 1 fine plants, 53c each; 3 for \$1.40; 10 for \$4.25; 25 for \$9.95; prepaid.

Portland, White Splendid Table Grape. This is my earliest white grape. A fancy variety with its sweet and juicy berries. It is a hardy grape, as hardy as Concord, and is a healthy grower. Berries good sized, sweet, juicy and of fine flavor. Portland is also a good producer. Portland and the other fancy varieties I am listing in this column will be the pride of your garden. Nice strong, 2-year-old No. 1 plants, 53c each; 3 for \$1.40; 10 for \$4.25; 25 for \$9.95; prepaid.

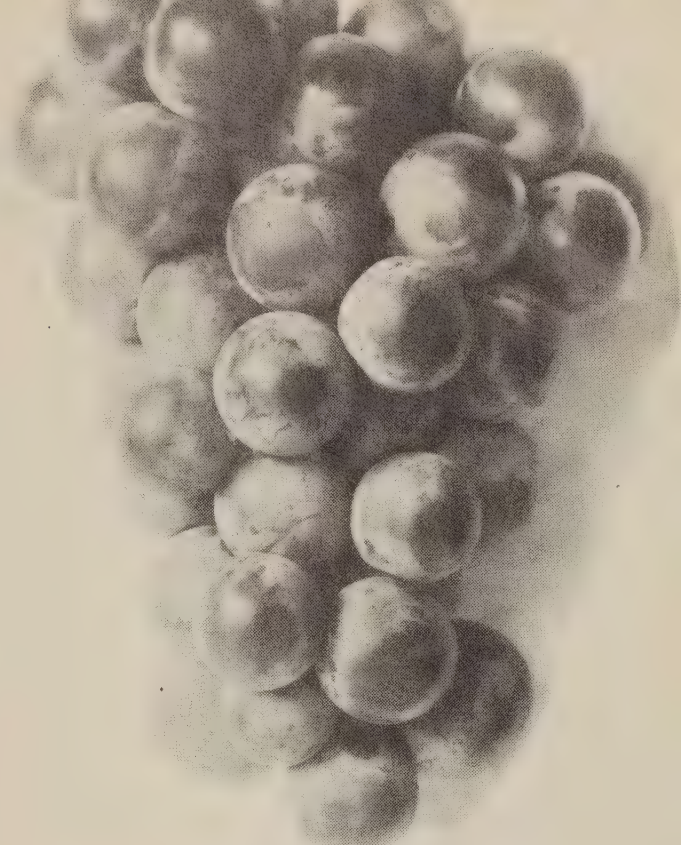
Golden Muscat An entirely new grape, the finest of all table varieties. Berry light golden yellow with white dots and whitish bloom, large oval shaped, very juicy, tender, aromatic, sweet with a refreshing Muscat flavor. Skin thin, not adhering to flesh, 1 to 2 small seeds which separate very easily. This new grape is hardy throughout the East and Middle West, is a wonderful producer, the berry clusters are extra large. The best there is for table use. It is not a good shipper, the berries are too tender to stand packing or shipping. Ripens with Concord. Supply limited. Order early. 95c each, postpaid.

for Grapes

disease, use the Sherwin-Wil-

WHEN TO SPRAY

1. When shoots are 8 to 10 inches long.
2. Just before blooming.
3. Just after the blossoms fall.
4. Two weeks later.
5. When the berries begin to touch in clusters.



FREDONIA GRAPE.

Fredonia, Black Fancy table grape. This is the finest early black grape of the hardy class. Fredonia is as hardy as Concord. The berries are of large size, black with blue bloom, and they ripen evenly. Fredonia has a most delicious flavor, rarely found in grapes. I recommend Fredonia, and I suggest that you include a few of them in your planting. My Fredonias are of the true original stock. Extra fine 2-year No. 1 plants, 53c each; 3 for \$1.40; 10 for \$4.25; prepaid.

Concord, Black The well known, fine old variety, planted everywhere. Bunches and berries of good size, black, covered with a rich blue bloom. Skin tender but firm, juicy sweet when fully ripe; very hardy and productive. There are varieties of better quality for table use, but for jelly, grape juice or wine, none will equal Concord for heavy production, and regular bearing. Can be grown most anywhere, for the Middle West it is the most dependable bearer.

	3	10	25	100
2-year nice plants.....	\$0.60	\$1.70	\$4.00	\$14.00
2-year No. 1 plants, extra heavy90	2.30	5.25

No Grapes can be shipped to Arizona, Oregon and Washington.

PRUNING INSTRUCTIONS

All the care grapes need in future years consists of pruning. Fast growing grapes should have a light pruning end of June, cutting off the ends of all new growth. Early in the spring, older grape vines should be pruned, removing the oldest branches, which have already produced a crop, making room for young growth. If grape vines bleed due to spring pruning, remember, this has no ill effects, and is no cause for alarm.

Shade TREES

Most Complete
Assortment of Hardy
Shade Trees

Pages 26 to 35

Soft or Silver Maple *Acer Saccharinum*. Another hardy native upland tree, almost as popular in the Midwest as the American Elm. It is a rapid grower, and by planting our Soft Maples you will get husky, well-shaped trees of which you will be proud at all times. Do not mistake the Silver Maple for a white-leaved tree, as the foliage of the Silver Maple is light green above and of greenish-gray color underneath, deeply cut. The trees with the leaves of silvery white underneath are Poplars (Belleana and Silver Poplars). Prices of our Soft Maples are for strictly first class trees.

	5-6 ft.	6-8 ft.	8-10 ft.
Each	\$0.80	\$1.10	\$1.50
Pair	1.40	2.00	2.80
Six trees	3.80	5.40	7.60
Ten trees	5.90	8.40	11.25



Soft Maple, 11 years old.
Chautauqua Park, Beatrice.

Soft Maple Seedlings We can supply a nice grade of 12 to 18-inch seedlings, best suitable size for timber and windbreak plantings. Price: 90c for 25; \$2.90 per 100; pre-paid. Seedlings of other Maples are not available this year.

Maple, Sugar or Hard Maple

Acer Saccharum makes a large pyramidal tree with large, handsome foliage of rich, pleasing green, turning red in the fall. Very hardy, although it is not a rapid growing tree for the Middle West. It is a long lived tree. Nice 5 to 6-ft. trees, each, \$2.00; pair, \$3.75.

Maple, Norway *Acer Platanoides*. A hardy tree of majestic form, perfect outline of the crown. It is a hardwood tree, leaves very large, deep green, changing to a pretty pale yellow in the fall. I recommend this tree for a hardy, long lived tree of special beauty. 5 to 6-ft. trees, each, \$1.60; pair, \$2.80.



Norway Maple

PLANTING INSTRUCTIONS

Same as for planting fruit trees. The holes must be dug deep and wide enough to allow plenty of room for all the roots, without cramping them. Digging the tree holes a few inches deeper than really necessary permits the filling in of loose soil in the bottom, in which the new rooting will take place quicker and surer. Soil to be used in the bottom, as well as around the roots of the tree, must not contain fresh fertilizer of any kind. Use good ordinary garden soil which has been under some kind of cultivation before.



Honey LOCUSTS

The photos above were taken in the Beatrice Chautauqua Park, showing left to right: Thornless Honey Locust, 8 years old—the same tree taken in the winter. Note the natural even distribution of its branches—a five-year-old Honey Locust.

Thornless Locust *Gleditsia Triacanthos Inermis*. For street and lawn planting it is one of the very choicest long-lived hardwood trees. Without pruning it will grow up to a beautiful shade tree, developing a splendid crown. It is a fast grower, second only to the Elms. Due to an unusually deep root system, grass or flowers can be grown with best success even close to this tree; it never makes sprouts or suckers from the roots. Entirely hardy, healthy and clean. Fancy trees, perfect straight stems, well rooted; the finest on the market.

	5-6 ft.	8-10 ft.
Each	\$ 1.60	\$ 2.80
Pair	3.00	5.40
6 trees	8.20	15.30
10 trees	12.80	24.00

Kentucky Coffee-Bean Tree

Gymnocladus dioicus. Hardy in Nebraska, and from here east and south. A most picturesque tree, even in winter. Grows to a large size, making a fairly tall stem, with the crown spreading considerably higher than the Elm. With its light blue-green fern-like foliage it shows up nicely amongst other trees in parks as well as street planting.

	4-5 ft.	5-6 ft.	6-8 ft.
Each	\$1.00	\$1.50	\$2.00
Pair	1.50	2.50	3.20

Common, Thorny *Gleditsia Triacanthos*. A most valuable native tree with spreading branches, forming a large crown of very good and even shape. The leaves are small, coming in sprigs of 18 and more, always free from disease or insects. For a hardwood tree this is perhaps the most rapid grower, and is perfectly hardy everywhere. Has very prominent thorns. This Locust never makes sprouts from the roots. The Honey Locust should be planted more frequently. For easy, quick starting, vigorous growth, and special hardiness that comes only from an upland Nebraska nursery, our trees will please you.

	6-8 ft.	8-10 ft.	10-12 ft.
Each	\$ 1.50	\$ 2.20	\$ 3.00
Pair	2.75	4.00	5.50
6 trees	7.80	11.00	15.00
10 trees	12.00	15.00	21.00
25 trees	25.00	34.00

Small Locusts for Timber, Woodlot or Windbreak Planting

	THORNY HONEY LOCUST		
	25	100	300
12-18 inch, prepaid	\$1.20	\$3.90	\$11.00

	THORNLESS HONEY LOCUST		
	1.65	6.00	17.00
18-24 inch, prepaid			

	BLACK LOCUST		
	For erosion control and wood-lots.		
	25	100	300
12-18 inch, prepaid	\$1.20	\$3.90	\$10.00

Hardy POPLARS

Volga Poplar Of the column-shaped poplars this is the hardiest variety, and can be planted throughout the Mid-West and North where the Bolleana is not entirely hardy. It is a very rapid grower, slightly more spreading than the Bolleana. Leaves entirely green. For a tall screen planting these trees can be planted as close as 8 feet apart. Should not be planted less than 18 or 20 feet from the house, because of its rather shallow root system. Our trees are selected for nice straight stems.



The Volga Poplar. Very effective near tall buildings, where its height offsets the sharp outline of the building.

BEATRICE, NEBRASKA

4-5 ft. Trees.
 Each\$0.35
 2 for..... .60
 6 trees..... 1.65
 5-6 ft. Trees.
 Each\$0.55
 2 for..... 1.00
 6 trees..... 2.75
 8-10 ft. Trees.
 Each\$1.00
 2 for..... 1.85
 6 trees..... 5.20

Prices of shade trees do not include freight. We pay the freight on all shipments of trees and plants (seeds not included) if your order amounts to \$15.00 or more.



The tall growth and spire-shape of Poplars is desirable in most landscape work, and is very effective in small and large plantings.

Poplar, Bolleana Grows to a spire of 80 feet in height. Leaves shining dark green with silvery white underneath. Hardy as far north as Nebraska. Does not make root-sprouts. A beautiful tree of striking effect in the landscape. Well grown, 4 to 5 ft. nice straight trees, not branched, 95c each; pair, \$1.70.

Cottonwood Populus. Sargentii. The native timber tree. Very common along streams where it holds the soil well and reaches mammoth dimensions, in thickness of its stems as well as the spread of its lofty crown. The Cottonwood withstood the drought and the cold remarkably well.

By Express:	25	100	300
12-18 inch.....	\$0.50	\$1.20	\$3.00
18-24 inch.....	.60	1.90	5.00
2- 3 feet.....	.80	2.50	6.00

Prepaid:			
12-18 inch.....	.58	1.35	3.30
18-24 inch.....	.70	2.10	5.40
2- 3 feet.....	.90	2.75	6.50



Pin Oak in early spring just before the new leaves appear, and after the winter foliage has fallen.



Pin Oak in mid-summer, a truly majestic tree, of beautiful symmetrical growth, without pruning.



Pin Oak in the winter, retaining most of its leaves after they have turned to a showy red-brown in late fall.

Pin Oak Nature's gift of a tree, combining the longevity of a hardwood tree with rapid growth, perfect shape and elegant appearance. We could not name you a finer, prettier tree if you need a fairly tall grower with medium spread. The photos above, taken in the Beatrice Chautauque park of trees 11 years and less old, tell the whole story.

	2-3 ft.	3-4 ft.	4-5 ft.	5-6 ft.	6-8 ft.	8-10 ft.	10-12 ft.
Each	\$0.40	\$0.75	\$1.00	\$2.75	\$3.20	\$4.00	\$6.00
Pair	.70	1.30	1.60	4.80	5.90	7.00	10.50
6 trees	1.80	3.50	4.50	13.00	15.50	19.20	29.00

By express, safe delivery guaranteed.



Bur Oak *Quercus macrocarpa*. Note photos above, taken in summer and winter at the Chautauqua park here in Beatrice. This tree has a spread of not less than 50 feet in any direction. For a long-lived hardwood shade tree, which no storm nor winter will affect, we cannot find a better true story than these snap shots. An architect could not build a better roof. Nice 5 to 6-ft. trees, \$3.00 each; 2 for \$5.00. 6 to 8-ft. tree, \$3.50 each; 2 for \$6.00.

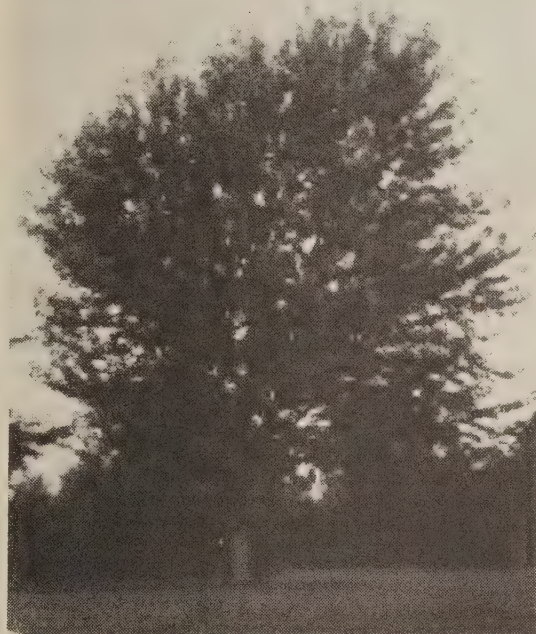


A cool, shady promenade in the Beatrice Chautauqua Park, Hackberries being the source of the shade and beauty of this pretty planting.

The winter scene of the same two rows of Hackberries as shown at left, gives you an idea of the nice natural semi-erect structure of this tree, requiring very little care after planting.

Hackberry

Celtis occidentalis. American Nettletree. A native tree with numerous slender branches which spread almost horizontally, and thick, rough bark; apple-like foliage, but more pointed and of a bright green color. In habit of growth it resembles an Elm somewhat, but grows slightly more erect. In the North, where the Elms are not doing quite so well, the Hackberry is very satisfactory. A most desirable tree for general street planting, very hardy, and stands our dry weather well. We recommend it anywhere in Kansas, Wyoming, Montana, the Dakotas and Nebraska.



As a single tree, Hackberry makes a fairly tall, and still a spreading crown. A good shade tree wherever you plant it.

Price of Hackberry

6 to 8 ft. nice trees, \$1.50 each; pair, \$2.65; 6 trees, \$7.50; 10 for \$11.00.

8 to 10 ft. very choice trees, \$2.25 each; pair, \$4.00; 6 trees, \$11.00; 10 trees, \$16.00.

10 to 12 ft. extra heavy trees, well branched and well rooted, \$3.40 each; pair, \$6.00; 6 trees, \$16.00; 10 trees, \$24.50.

If your order for trees (seeds not included) amounts to \$15.00 or more, we pay the freight to your station.

American Ash

Fraxinus Americana. Grows well most anywhere, requires very little attention, and grows a very nice, well shaped crown. Exceptionally hardy and drought resistant. The American Ash belongs to the fast growing hardwood trees. The seedlings are of particular value for timber and windbreak plantings. Ash trees should also be included in all wood-lot plantings. Extra choice, well rooted trees:

	6-8 ft.	8-10 ft.	10-12 ft.
Each	\$ 1.50	\$ 2.25	\$ 3.00
Pair	2.65	4.00	5.25
6 trees	7.50	11.00	14.20
10 trees	11.00	16.00	20.00

Seedlings of American Ash

For wood-lot, timber and windbreak planting. Nice 12 to 18-inch well rooted Seedlings, 25 for 75c; 100 for \$2.20; 300 for \$5.90; prepaid.

European Mountain Ash

Sorbus Aucuparia. Hardy tree of medium size. Bark smooth, crown branches dense and quite symmetrically arranged, bearing from July until winter its large clusters of red berries which attract song-birds. A fine lawn tree and very hardy. Does well in the North as well as in Nebraska and in the higher altitudes of Colorado, Wyoming and Dakota. Well rooted and well shaped trees, 5 to 6 ft. size, \$2.00 each; pair, \$3.60, by express.

American Beech

Fagus Americana. This is the regular Beech, growing to a majestic tree of hardwood type. It is a very popular tree in the East, but is almost unknown west of the Mississippi. We are offering this Beech mostly at the request of our customers in the eastern states, and can furnish it only in the 12 to 18-inch seedling grade, the larger sized Beech are rather difficult to transplant; the seedlings are easy to start. 12 to 18-inch seedlings, 10 for 55c; 25 for \$1.20; prepaid.



American Plane tree, winter picture. Note the even and pretty outline of the crown. Summer view is a sample of the splendid appearance of the American Plane tree.

Most photos of ornamental trees shown in this book were taken in the Beatrice Chautauqua Park. Our city can justly be proud of this beautiful park; visitors are always welcome there, and find very good accommodations for a picnic or other outdoor activities. No cost to anyone.

When you select a shade tree, it must fulfill all your requirements. For this reason we try to show you unretouched snapshots of as many hardy trees as possible. We describe each tree to you just as we know it to grow, and in some instances we show you a winter picture to give you a better idea of how a tree branches out.

American Plane Tree *Platanus occidentalis*. Also called Buttonwood. A rapid growing tree, of noble, upright growing habit and large deep green leaves. Its beauty of shape and foliage is further increased by the smooth bark of this tree, light colored and mottled green. A free grower, and very desirable for park and street planting. Claimed to be one of the best trees for large cities where it stands the gasses and smoke of nearby factory areas better than any other tree. The tree is hardy here and anywhere through Kansas, Iowa, Illinois and the East, but not hardy in northern Nebraska and from there north. Nice trees, easy to start, 5 to 6 ft., \$1.50 each; pair, \$2.65; 6 for \$6.95.

Sieboldi Walnut *Juglans sieboldii*. An Oriental Walnut, producing a valuable fruit, but also making a very pretty tree of rapid growth and medium size, pretty foliage and fitting in nicely in groups of other trees, or on the lawn where a medium sized tree of nice appearance is wanted. 2 ft. nice trees, \$1.25 each.

Catalpa Speciosa *Catalpa bignonioides*. The hardy Catalpa. An effective tropical looking lawn tree of tall, upright growth, with very broad bright green leaves and purplish white blossoms in large clusters like grapes. Grows fast, resists drought well and is practically free from all insect pests or diseases. The wood of this tree is very hard and durable as posts. We recommend the hardy Catalpa wherever tall growers are needed, rather than for shade trees. 4 to 5-ft. trees, 85c each; pair, \$1.45; 6 for \$4.00. 6 to 8-ft. trees, \$1.50 each; pair, \$2.50; 6 for \$6.90. 18-inch seedlings, postpaid, \$2.60 per 100.

American Linden *Tilia Americana*, Basswood. The tree at left, in the Chautauqua park, 11 years after planting, shows the nice pyramidal crown which this Linden makes without pruning. It is not a fast grower, but takes on attractive ornamental qualities at an early age, and eventually grows to enormous sizes. It blooms in June, very fragrant. Foliage large, shiny green, keeps clean and healthy throughout the growing season. We recommend it for ornament. Where a rapid grower for quick shade is needed, this tree would be slightly disappointing; it will make a large tree, but takes plenty of time to do so. Hardy throughout the East and the Mid-West corn belt. 5 to 6-ft. nice trees, \$2.00 each; pair, \$3.50; 6 trees, \$9.50.

Please Order Early Skilled help is somewhat short, and so is good stock. We have to start our planting and field work end of March, and if we have your order early we can give it more time and attention, and can be quite sure of filling your order complete.



Our Trees . .

Are upland grown. This means hardier stock and better roots. They are measured for height from the ground up, as they will be after planting. Plant our shade trees about 2 to 3 inches deeper than they were grown in the nursery, water well at planting time and through dry parts of first summer, and you will have beautiful trees on your grounds in record time.



The white bark of stem and branches of the Birch always shows up well in groups of shrubs, and particularly in groups of Evergreens. The Birch is a beautiful tree, hardy, and growing to large size.



There is something restful about the appearance of a Weeping Willow, and something elegant about its graceful branches and light green foliage.

Cutleaf Weeping Birch Of all pendulous or so-called weeping trees, this Birch and the Niobe Weeping Willow are the two most widely known. This Birch grows tall and slender, yet with vigorous growth. It makes an erect central trunk with silvery white bark, from which the limbs spread out in graceful arches. The leaves of a beautiful shade of green, are deeply and delicately cut. The whole tree presents a soft, pleasing effect rarely found in other trees.

	4-5 ft.	6-8 ft.
Each	\$ 2.20	\$ 3.80
Pair	3.95	7.20
Six trees	11.00	21.00

White Birch, European *Betula Alba.* A graceful tree of upright growing habits, getting a white bark in later years. This tree is hardy; can be grown successfully in the Dakotas and Minnesota. It is not a fast grower, but considered almost a hardwood tree of long life. 5 to 6-ft. tree, well rooted, well shaped, carefully selected, \$2.00 each; pair, \$3.65; 6 trees for \$10.80.

Niobe Weeping Willow The hardy weeping Willow with golden-bark twigs. Branches are very slender, long and well drooping, growing to the ground in a short time, or near a pool they reach to the water line. Leaves are very light green. This is a very vigorous grower, given a fairly moist place it will grow faster than most trees, and it is perfectly hardy everywhere. We recommend this tree for the lawn as a single specimen, near the pool, for parks and for cemetery planting. Choice, healthy trees, 4 to 5-ft. size, 85c each; pair, \$1.55; 6 for \$4.45. 5 to 6-ft. trees, \$1.35 each; pair, \$2.50; 6 trees for \$6.90. 6 to 8-ft. trees, our largest size, \$1.95 each; pair, \$3.60; 6 trees for \$10.00.

PRUNING OF SHADE TREES

Softwood trees such as Elms, Soft Maple, Willow, require pruning in order to keep branches from splitting out in heavy storms. Where branches are too close, some of them should be removed entirely; those which appear to be too long should be shortened. All pruning of softwood trees should take place from July to September. Hardwood trees rarely need pruning, only to improve their shape. Prune them at any time it is necessary, but preferably in late fall or early spring.

Hardy for Great Beauty



Against the background of large trees with dark green foliage, the silver cast of the Russian Olive shows up beautifully throughout summer and fall.

Russian Olive *Eleagnus Angustifolia*. An extremely hardy tree of medium size and spreading top if the lower limbs are removed. Or it will grow to dense shape almost from the ground up if the tree is not pruned. Shiny black bark, and small to medium sized silvery white leaves. The small yellow blossoms in the spring are quite fragrant. Can also be used in tall hedges and screens, planted 3 to 6 feet apart in the row. For this purpose use the seedlings. For a small lawn tree of special beauty, in parks or in groups of evergreens. Russian Olive is a very valuable tree. Nice well rooted 4 to 5-ft. trees, \$1.00 each; pair, \$1.75. 5 to 6-ft. trees, \$1.35 each; pair, \$2.40.

RUSSIAN OLIVE SEEDLINGS. 12 to 18-inch, 10 for 95c; 25 for \$1.90; 100 for \$6.50; postpaid.

Bechtel's Double Flowering Crab

Pyrus coronaria. Very hardy, thriving in most any soil. Covered in the spring with large, beautiful double flowers, fragrant, and of very delicate pink color. The tree at blooming time looks like a large tall tree of roses. The only sweet scented double flowering Crab which is completely hardy. Suitable for lawn, or in groups of large shrubs. Nice 2 to 3-ft. trees, \$1.00 each; pair, \$1.80.

Dolgo Crab For full description of this tree kindly note page 11. It grows to a larger size than Hopa, and blooms most profusely, therefore often used for ornament. Color of blossoms is a soft apple-blossom pink. The fruit of this tree is very valuable, as it is the finest dark red jelly crab in existence. Price of Dolgo Crab, see pages 8 and 9.

Hopa Crab Hopa is the word for "beautiful" in the language of the Sioux Indian, and the tree deserves this name very well. It is a striking sight when in bloom owing to its wealth of beautiful deep rose-crimson blossoms, and in the fall when the miniature apples of this tree take on a bright red color, the tree once more becomes very pretty. The fruit can be used for jelly, but usually runs very small in size. The picture on this page and of the branch on page 35 can hardly do justice to the splendid appearance of this tree. You will love it on your lawn, or wherever you wish a hardy, medium sized tree of finest blooming qualities. 3 to 4-ft. nice trees, \$1.00 each; pair, \$1.80.

Paul's Double Flowering Scarlet Hawthorn

Oxycantha pauli. A very handsome tree with shiny leaves, dark green and nice shape. Grows to medium size, with even, dense crown. Late in the spring this tree brings forth its compact clusters of blossoms. They consist of many very double flowers of showy scarlet crimson color. This tree is a beautiful sight when in full bloom. Along a walk, on the lawn, or in groups of shrubs, wherever you plant this tree, it will be very attractive. 4 to 5-ft. strong trees, well rooted, \$2.95 each; per pair, \$5.00.

The Hopa Flowering Crab is a sight of great beauty when it blooms for two to three weeks in May. On page 35 please note the branch of blossoms of the Hopa Crab.

Flowering TREES

Caragana, Siberian Pea Tree

An extremely hardy dwarf tree or shrub, originally from Siberia. The branches have small, sharp thorns. In the spring it bears pretty yellow blossoms in long clusters, similar to peas. It will grow anywhere and is perfectly hardy, even in Canada. We recommend it particularly for tall screens or hedges, as its habit of growth is upright, and stands shearing very well. It is ornamental, due to its pretty foliage and blossoms, as well as protective because of its fine thorns. For hedge or screen, plant 18 inches to 3 feet apart in the row, using the small size trees. 12 to 18-inch, 10 for 70c; 25 for \$1.50; 100 for \$5.00; prepaid.

Hansen's Purple Leaf Plum

Prunus Cistena. All through the growing season this is a most showy tree. Its reddish purple leaves showing up splendidly. As a single specimen on the lawn or in groups of tall shrubs with green or yellow foliage, this dwarf tree shows up extra well. Nice 2 to 3-ft. size, \$1.10 each; pair, \$2.00.

Except where quoted prepaid, prices do not include cost of transportation. However, we pay the freight on all shipments of trees (seeds not included) if your order amounts to \$15.00 or more.

The camera simply cannot convey all the beauty brought forth by the true Hopa Crab. The nice shape of the tree, the exquisite arrangement of the blossoms, the long blooming period in May, and the deep rose-crimson color can be appreciated only by seeing the Hopa Crab in bloom, and still better, by calling one your own, as a part of your lawn ornaments.



Red Bud Judas Tree. *Cercis canadensis.* A very ornamental native tree of medium size. Leaves are perfectly heart-shaped, free from insects or plant diseases, and hardy as far north as Canada. Early in the spring, before the leaves appear, its branches are covered with small reddish-purple flowers. It produces the first outdoor flowers of the spring throughout the Mid-West. Easy to grow, and should be planted much more freely, on the home grounds or in parks, wherever a nicely shaped tree of medium size can be used. Extra choice trees, 5 to 6-ft. size, \$2.10 each; pair, \$3.75.

Pussy Willow

Salix caprea. Also called Goat Willow. Small tree, or rather shrub, of very upright, tall growth. Foliage light green and showy. In early spring, before the leaves appear, the branches are covered with the silky silvery catkins which are so pretty in bouquets. In the house, kept in a vase with water, the Pussy Willow twigs will remain fresh for weeks and retain the nice appearance. Trees of this kind, producing pretty cutting material for early spring bouquets are always the things the entire neighborhood loves and admires. Your home grounds are worth a few additions of such lovely spring bloomers as Pussy Willow, Flowering Crab and Red Bud. 2 to 3-ft. Pussy Willows, nice little trees, 75c each; pair, \$1.25.



Sonderegger's

Hardy HEDGES for Every Purpose

A nice lawn, some hedge-work here or there, and your garden looks well, no matter how you arrange it. Your flowers look better, your shrubs or your trellis work when you have nice backgrounds—hedges.

HEDGES for Sheared Form Effect

Barberry, Thunbergi Will make a pretty hedge up to 18 to 24 inches in height. Keeping its neat shining green foliage throughout the summer in perfect condition, changing to a showy red in fall. Densely branched, can be grown in sheared form or without shearing in natural shape. For shearing plant 8 inches apart, for natural growth 12 inches apart in the row. Larger sizes, see page 38. 12-18 inch hedging size, 10 for 95c; 25 for \$2.35; 100 for \$8.90; prepaid.

Amur River Privet Amongst all sheared hedges, Amur River Privet stands far out in the lead. Its extreme hardiness is only one of the advantages Amur River Privet offers; a clean, healthy, shining green foliage, a dense growth that responds wonderfully to shearing are also found in this Privet. I recommend planting either in a single row 6 to 8 inches apart, or in a double row for a very broad hedge, the rows 8 to 10 inches apart, the plants in the rows 8 inches apart, and standing alternately. Right after planting cut them back to within a few inches from the ground to make the hedge bush out low. Shear twice during the summer to even up the new growth. I have well rooted plants, the best for hedges.

Postpaid:	10	25	100
12-18 inch nice plants...	\$1.35	\$2.95	\$10.75
18-24 inch heavy plants..	1.95	4.50	16.00

Chinese Elm Due to the rapid growth of the seedlings, and their response to shearing, a quick hedge can be grown from 12 to 18-inch Chinese Elm seedlings, see page 26. Particularly for hedging on the larger lawns of farm properties. Plant 6 or 8 inches apart in the row, cut the seedlings back to 6 inches from the ground right after planting to encourage a low branch system. Shear the new growth once or twice through the summer, and cut the hedge back every spring, allowing only 4 to 6 inches of growth to remain on the hedge from one year to the next.

Russian Mulberry Planted and sheared from the beginning like the Privet or Chinese Elm, the Russian Mulberry makes a very pretty sheared hedge. Note picture on page 37. The spacing of the plants for a hedge of not over 4 ft. height should be about 8 inches apart in the row. And for a very wide hedge two rows can be planted, the rows 10 inches apart, the plants in each row 10 inches apart, and arranged alternately. This is a stout, hardy hedge, responding well to shearing, by branching very freely and becoming dense. Russian Mulberry plants are very scarce this year. If you send us your order early we can be sure to reserve the plants for you.

Prepaid:	25	100	300
6-12 inch plants	\$0.80	\$2.90	\$8.00
12-18 inch plants	1.10	3.90	9.90

Planting and Care of Hedges Simplest method of planting is in a trench 10 to 12 inches deep, and the width of a garden-spade is usually just right. Set the plants in about 1-inch deeper than grown before in the nursery, and before completely filling the trench with soil, apply plenty of water. Finish filling when the water is soaked away, which still makes it possible to put all plants in line. Shear the tops down to about 4 inches from the ground, right after planting. This produces a low, dense growth. Shear the new growth in midsummer to any height. Shear again early the following spring to 8 or 10 inches from the ground. Summer shearing is to shape up the new growth to even height and sides. Spring shearing builds the hedge up gradually, and produces the dense growth needed for good appearance. Flowering hedges need not be sheared.

A dense Mulberry hedge as shown in this photo is easy to grow, and our extra heavy 12 to 18-inch plants will assure you of quick and complete results.



FLOWERING HEDGES AND SCREENS

Persian Lilac Makes a most elegant tall hedge, will not make sprouts from the roots, keeps a healthy foliage throughout summer and fall, and blooms beautifully at "Lilac-Time." For a fine, dense screen-enclosure, plant Lilacs. Nice hedging size, 12-18 inch plants, 10 for \$4.25; 25 for \$9.00; prepaid.

Old Fashioned Lilac The same as above except for its leaves, which are larger, and is preferred where there is no shortage of ground space, as this Lilac sometimes makes a few sprouts from the roots. Blooms beautifully. Special price on hedging size, 12-18 inch plants, 10 for \$3.90; 25 for \$8.20; 100 for \$31.40; postpaid.

Spirea Van Houtti There is no other flowering hedge of this height (4 to 5 ft.) that would be so hardy, and require so little care as the Spirea Van Houtti. Blooms beautifully in June. 12 to 18-inch nice plants, 10 for \$1.45; 25 for \$3.45; 100 for \$12.90; prepaid.

Bush Honeysuckle Grandiflora Bush Honeysuckle makes a pretty, very dense screen 8 to 10 feet tall. Plant them 18 to 24 inches apart in the row. Blooms pink in May, later followed by red berries. Extremely hardy, always a fine clean shrub, healthy foliage, and an upright grower. Can be sheared to even height. 12-18 inch nice plants, 10 for \$2.90; 25 for \$6.80; postpaid.

THORNY HEDGES, for Protective Enclosures

Russian Olive—Silver Leaf

Silvery-gray foliage and twigs, which makes a hedge of these plants very attractive. Plant 8 inches apart in the row, and shear the plants right after planting to 3 inches from the ground to make them bush out low. Will make a nice 4 ft. hedge, or for a tall screen plant 12 inches apart. Shear during the summer once or twice to even up the new growth, and cut the hedge back every spring, allowing only 4 inches of previous year's growth to remain on the hedge. My plants have strong roots, short tops, special hedge-grade. Prices, see page 34.

Osage Orange The most popular hedge for field and stock enclosures. Best for post growing. Osage Orange is coming back; in recent years it has been proven that these hedges protect fields from hot and dry wind, and catch the snow in the winter. It improves farm ground. 12 to 18-inch seedlings, 100 for \$2.00; 300 for \$5.00; prepaid.

Caragana, Siberian Pea Tree

Extremely hardy, makes a pretty screen, very upright in growth, blooming yellow in May. Has a pretty foliage. For enclosure of your garden, as well as for stopping the wind, this plant is very satisfactory. Prices, see page 35.



ALTHEA—BRANCH OF JEANNE D'ARC

ALTHEA

Rose of Sharon

Hardy in the North with protection of straw-mulch. Fine upright growing shrubs (6 ft.), blooming beautifully through late summer and fall.

Althea Ardens Large double violet flowers. colored

Althea Jeanne d'Arc Pure white double flowers.

Althea Lucy Finest red, very double flowers. Prices of all Altheas: Extra nice 2-ft. shrubs, 49c each. postpaid.

Barberry Thunbergi Grows to a height of 2 to 3 feet, densely branched and with a clean, healthy foliage, shining dark green throughout the summer, changing to a high tone of scarlet in the fall. Berries showy crimson, remaining on the bush through the winter, are adding to the splendid appearance of this shrub. Stands shearing well, and is often grown for globe and box shapes, also for hedges. Has small thorns along the branches. For a neat border shrub this is one of the best.

Prepaid	1	3	10	25	100
12-18 inch nice hedging size.....	\$.39	\$ 1.10	\$ 3.00	\$ 6.90	\$ 28.90
18-24 inch nice shrubs

Red Leaf Barberry (Atropurpurea) Of the same strain as the Barberry Thunbergi, also growing to a height of 2 to 3 feet. However, the foliage of this barberry is of a bronzy-red color throughout the entire summer, coloring up to a fiery red in the fall. In a sunny or partly sunny place the color develops best, in full shade it remains almost green. Can also be sheared to forms, in landscape work it is used very generally for color effect. My shrubs are selected for extra good color.

Prepaid	1	3	10
18-24 inch heavy selected bushy plants.....	\$0.65	\$1.75	\$5.10

ROSE OF SHARON Collection

1 Violet
1 White
1 Red

All double flowering, 2-ft. shrubs.... **\$1.25**
PREPAID

Our Barberries are free from Rust and will never be affected by this disease, therefore can be sent to all states.

Choke Cherry

(Prunus Denissa). Grows to a large size, and can be grown in bush or tree form. Blooms early in the spring in dense racemes of white flowers, a beautiful sight when in full bloom. The cherry that appears later in the season is purple black, sometimes used for canning. Hardy everywhere. 2 to 3 ft. nice shrubs, 45c each; 3 for \$1.20; prepaid.

SHRUBS

Selected for Hardiness

Long Life

Year-round Ornaments

[Page 38 to 45]

Butterfly Bush Trio

1 Ile de France
1 Charming
1 Red Dubonnet

All well rooted
plants, will
bloom the first
year; the three
for

\$1.49
PRE-PAID

BUTTERFLY BUSH

THE 3 FINEST TYPES. Begin to bloom in July, and continue throughout the summer and fall. Roots are perfectly hardy, making a complete new blooming size growth every year.

Ile de France Butterfly Bush Grows to a height of 4 to 5 feet. The large flower spikes of lilac-purple appear in great abundance through summer and fall. Highly decorative in the garden or in bouquets. Strong blooming size roots, 49c each, prepaid.

Pink Charming Butterfly Bush A most beautiful new variety of distinctly pink to lavender shaded blossoms, otherwise, in height and freedom of bloom, same as the above. 65c each, prepaid.

Red Dubonnet Butterfly Bush A new dark wine-red dubonnet colored type, with firm large spikes and large individual florets. Does not sunburn easily and blooms well from June until late fall. 60c each, prepaid.

Double Flowering ALMOND

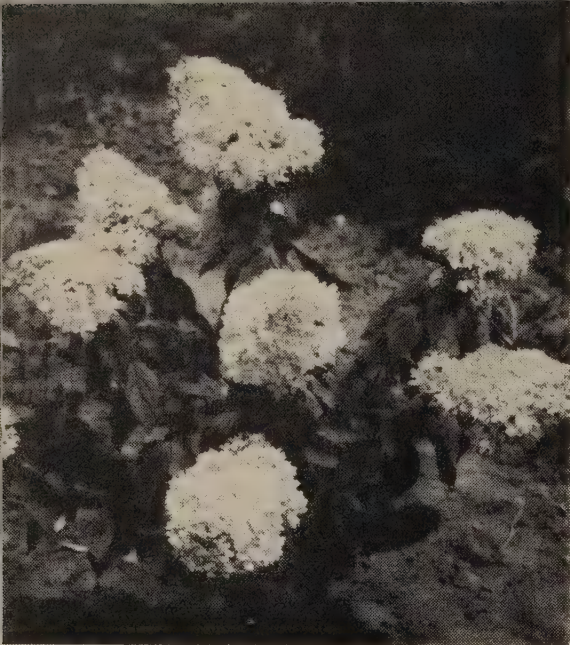
Rose-Tree of China

Double Pink (*Prunus Amygdalus*). Will form a well shaped bush 4 to 5 ft. high, with erect main canes and bushy branches. In April when the double rose-shaped blossoms cover the slender branches of the bush it is truly a gorgeous sight. Hardy as far north as southern half of Nebraska and Iowa.

Nice shrubs, 2 ft. size, 90c each; 3 for \$2.50; prepaid.



Beautifully shaped, well arranged on the twigs, the flowers of the double flowering Almond rank amongst the finest of early spring.



← **Hydrangea Paniculata** Grandiflora.

Commonly called P. G. Hydrangea. Grows 4 to 5 feet tall, and produces a wealth of immense heart-shaped flowers. When the blossoms first open in August they are white, turning to a pink and bronze color later, and remain on the bush throughout the late summer in that color. Very hardy, and a sure bloomer.

Hydrangea, American Ever-blooming

Also known as Snowball Hydrangea, Hills of Snow, and H. arborescens. Grows to a height of 5 feet. Flowers of dazzling white begin to appear in June, and under normal conditions this Hydrangea will bloom repeatedly during the summer and early fall. Hardy, responds extra well to frequent watering through dry seasons.



New Blue Hydrangea

Flower heads are large, and appear from mid-summer until fall in generous numbers. Likes a shady place, and in Nebraska, and from here north it should have a heavy mulch for winter protection. It cannot stand lower than Zero without protection. In soil which contains a slight amount of alkali the flowers are pink, but as soon as the soil is acidized in any way, the blossoms will be pretty sky-blue. Adding about one tablespoonful of Aluminum Sulphate (from the drug store) to the soil at planting time, will produce the nice blue color. Any soil in a shady location, with plenty of moisture, and leaf-mold in the soil to contain natural acid, will produce the blue color without further aid. 2-year-old nice shrubs, the strongest on the market this year, \$1.40 each.

Highbush Cranberry (Viburnum Opulus.)

Grows 8 to 10 feet tall, a magnificent shrub of upright growth and spreading top. Blooms in May, large flat clusters of single white

← blossoms, followed later by ornamental berries. A very hardy shrub, used quite frequently in the tall groups of shrubs in parks.



Weigela Rosea, a beautiful shrub.

Weigela Rosea Grows to a height of 5 feet, with its gracefully arching branches covering a diameter of 4 to 5 feet. Blossoms rose pink, appearing on each branch in almost artistic bouquet form during June, and usually again late in the summer. A fine shrub for the garden and cut flowers.

Weigela Eva Rathke Much like the Rosea, except that the blossoms of slim trumpet shapes are of showy crimson color, and usually has two blooming periods, June and late summer. Very pretty, should be in every garden. Weigelas in bloom are a beautiful sight, and are equally valuable for bouquets.

Prices: All varieties of shrubs on pages 40 and 41 (except Blue Hydrangea): 12 to 18-inch nice plants, 45c each; 3 for \$1.20. 2-3 ft. blooming size shrubs 68c each; 3 for \$1.90.

All postpaid to your door.

Snowball This is the old fashioned—→ variety, which is perfectly hardy, developing into a large shrub 10 to 12 feet in height, and blooming most profusely. Of all the later introductions of Snowballs, none has ever come up to this strain in either hardiness, freedom of bloom, or perfect shape of blossoms. It prefers a moist and shady, or partly shaded place. As a single specimen on the lawn, as well as in the background of shrub groups, or against the wall, this is one of the most loved and admired shrubs.



A young Snowball.

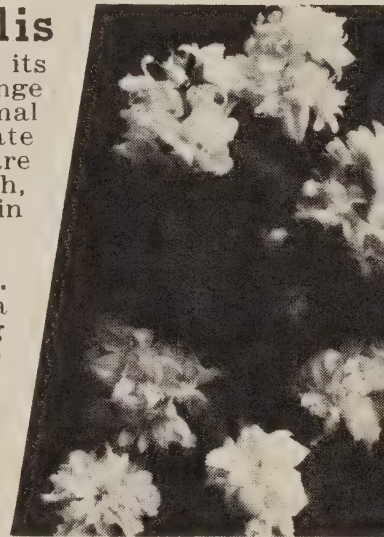
Hydrangea Trio

- 1 Paniculata
- 1 American Everblooming
- 1 New Blue

All blooming size plants. **\$2.45** POST PAID

Mock Orange Virginalis

Reaches a height of 5 to 6 feet and its first flowers appearing in May range from semi-double to double. In normal years this shrub blooms again in late summer, at that time the blossoms are single. Of compact but erect growth, very valuable. Blossoms are white, in clusters, and are fragrant.



Blossoms of Virginalis Mock Orange.

Flowering Quince Firebush.

Cydonia Japonica. Very early in the spring before the leaves appear this shrub produces a wealth of flowers. Deep flame-red cup shaped flowers all along the wood of this shrub are a beautiful sight. Blooming time April and May, later followed by small yellow fruit. The latter is of no market value. This shrub grows to

a height of 4 to 5 feet, spreads out nicely to form a good bush. It is perfectly hardy, and does well in the sun.

Hugonis Rose, Chinese Golden

Grows to a large bush, about 7 feet tall, and spreads to the same degree. It is hardy, needs no protection. The sparkling buds begin to swell in April, making a grand picture for two weeks and more, and finally when the buds open in late May and June the entire bush resembles a shimmering mound of gold. Nice 2-year shrubs, 69c each, prepaid.

Hansa, Red Rugosa Rose

Flowers large, of reddish violet color, and double, generally considered red. The bush is hardy, requires no winter protection. Note picture at right. Very nice 2-year old shrubs, 69c each, prepaid.



Flowers of the Hansa, Red Rugosa Rose, a beautiful hardy rose, with pretty foliage. Hardy rose hedges can be planted of Hansa or Grootendorst, planting 18 inches or 2 feet apart in the row.

F. J. Grootendorst Rugosa Rose

Another perfectly hardy rose which blooms throughout summer and fall in clusters of crimson red double flowers. Very showy in the garden. Height about 3½ feet; same as Hansa. Strong 2-year old shrubs, 75c each, prepaid.



CORNUS, DOGWOOD

Golden Twig Cor-

nus Grows to a height of 8 and 10 feet, branches and bark of golden yellow color, very attractive through the winter. 2 to 3 ft. extra strong shrubs, 75c each; 3 for \$2.00; postpaid.

Cornus Siberica

Also called the Coral Dogwood due to the shiny red color of bark and twigs. Grows to a height of 8 or 10 feet, blooms in clusters of white blossoms through early spring. Hardy everywhere. 2 to 3 ft. nice shrubs, 65c each; 3 for \$1.80; postpaid.

Bush Honeysuckle Grandiflora Rosea

The most popular of the Bush Honeysuckles. A very fine type which will grow to a height of 10 to 12 feet, with upright, somewhat spreading branches and a healthy, bright green foliage. The flowers are borne freely in May and June; they are of bright pink color, followed by showy red berries, which ripen in mid-summer and cling to the bush for a number of weeks. This fine bush is of great value for a tall hedge, a screen on the lot line, or as background to groups of smaller shrubs. It can be sheared to any desired form. Shearing of shrubs such as this should be done right after blooming. Will withstand the severest winters, even in the extreme North. 12 to 18-inch nice plants, 40c each; 10 for \$2.90; 25 for \$6.80. 2 to 3-ft. extra select shrubs, 69c each; 3 for \$1.95; prepaidd.

Bush Honeysuckle, as shown in this photo, are wonderful bloomers, perfectly hardy, with a good clean foliage, fitting well into any planting. Through late summer and fall highly colored berries decorate these shrubs.

Bush Honeysuckle Pink Tartarian

This Honeysuckle is an upright and very dense grower, reaching a height of 8 to 10 feet, and stands shearing well, if it is desired to grow this shrub in sheared form. Such shearing to be done right after blooming. Produces a wealth of lively pink flowers through May and June. Later in the season, when the berries color up to a showy red, they are very attractive amongst the fresh-green leaves of this shrub. It is extremely hardy and requires very little care after planting. Nice 12 to 18-inch plants, 45c each; 3 for \$1.20; 10 for \$3.70; prepaid. 2 to 3-ft. selected shrubs, 75c each; 3 for \$2.10; prepaid.

Bush Honeysuckle Red Tartarian

In habit of growth, height and adaptability, much like the Pink Tartarian Honeysuckle, the blossoms appearing in showy abundance through late May and June. In general landscape work it is to be regretted that the Bush Honeysuckles have received so little attention in recent years. We have so many requests for nice appearing shrubs of fairly tall growth, and for quick results, that we must point out the many desirable qualities of the Bush Honeysuckles. They will fill your needs in a most satisfactory way. 12 to 18-inch nice well rooted plants, 48c each; 3 for \$1.25; 10 for \$3.85. 2 to 3-ft. selected shrubs, 78c each; 3 for \$2.20; prepaid.

Climbing Honeysuckles are very satisfactory hardy vines for any arbor or trellis work. Note front cover page and page 46 for Climbing Honeysuckles.

Hardy Holly Winter-berry.

The hardiest of the Ilex family, and successful in the Middle West and East. Showy red berries for winter decoration. Shrub eventually reaches a height of 8 to 10 feet. Use plenty of Oak-leaf mold, to which Cottonseedmeal and waste tobacco may be added, also apply plenty of water. In this soil combination the shrub does extra well. Use no commercial fertilizer, not much care required after planting; this shrub wants to be left alone. 12 to 18-inch nice shrubs, 55c each, postpaid.

Juneberry An extra hardy

shrub, with a pretty, healthy foliage, growing to a height of about 7 feet. Blooming white in early spring, it is followed with a great abundance of berries of reddish purple color, turning almost black when fully ripe (edible). 40c each; 3 for \$1.00; prepaid.



Smoke Tree, Fringe Tree Purple NOTE PICTURE ABOVE. *Rhus cotinus*. A grand shrub, both for its foliage and long lasting blossoms of exquisite appearance. Grows 10 to 12 feet tall. The flowers of this bush look like puffs of smoke, and are formed of large, loose panicles bearing extremely small purple flowers. The entire blossom becomes profusely plumose, attaining their attractive smoky appearance. Blooms through the entire summer. Entirely hardy, a strong grower, branching out nicely to a large, vase-shaped bush form. This most interesting shrub, with a clean, shiny foliage, makes a beautiful showing as a single specimen on a lawn, or in groups of tall shrubs. 18 to 24-inch selected shrubs, 95c each, prepaid.

For Bird Lovers The berries of Red Waxberry, Bush Honeysuckles, Barberries, page 38; Choke Cherry, page 38; Highbush Cranberry, page 40, are all liked by birds and attract and feed your song-bird friends, besides making you highly ornamental shrubs.

Red Waxberry Also called Coralberry (*symphoricarpos vulgaris*). This is the native "Indian-berry," known for its red berries which it retains through the winter. A neat shrub, with clean healthy foliage, blooming pink in July, followed by red berries. Prefers a shaded place, does well even under old trees, and is perfectly hardy everywhere, requiring little care. Grows about 3 feet tall.

Prepaid:	1	3	10
18-24 inch	\$0.40	\$1.00	\$3.00
2-3 feet.....	.55	1.45	4.25

Tamarix Hispida A most graceful and continuous blooming shrub, reaching a height of 12 to 15 feet unless kept in a lower, dense bush form by shearing the branches every few years. Begins to bloom in June, and continues through the greater part of the summer. Blossoms of carmine pink color, in beautiful sprays. This shrub does not make leaves, its foliage consists of small green buds all along its slender branches, the blossoms appear in the very same fashion. Tamarix are not affected by saline or alkaline soil, they succeed even in the very spray of salt water at seaside plantings. Fully hardy. 12 to 18-inch nice shrubs, 38c each; 3 for \$1.05; 10 for \$3.20. 2 to 3-ft. selected shrubs, very nice, 65c each; 3 for \$1.80; prepaid.

Extra Choice Lilacs

Finest fragrant flower of early spring. Vigorous growth plus an unlimited blooming ability are yours in Sonderegger's better Lilacs.

You will love your French Lilacs for their wealth of splendid cut-flowers.



LILAC Collection

- 1 Mrs. W. E. Marshall
- 1 Madame Lemoine
- 1 Belle de Nancy
- 1 Marc Micheli
- 1 Charles X

\$2.98

All 5 Postpaid..

French Budded Lilacs

Grown especially for bouquets, their blossoms being particularly well developed, of beautiful color shades, and highly fragrant.

Charles X. Single, deep reddish purple, very popular.

Belle de Nancy. Double, rose with white center; a beautiful flower.

All varieties listed: Choice extra select 18-inch shrubs, 75c each; 3 for \$1.98; prepaid.

Old Time Lilac, Purple (Syringa Vulgaris.)

Grows to a beautiful shrub, dense well shaped, height 10 to 12 feet with shiny, leathery leaves, and a most beautiful blooming season. Highly fragrant flowers, true lilac purple. Used for single shrubs, in groups, and for hedges, screens and even windbreaks.

Prices of Old Time

Lilacs, Prepaid:	1	3	10	25
12-18 inch.....	\$.75	\$1.25	\$3.90	\$8.20
2-3 feet.....	.70	1.98	6.40	...

Mme. Lemoine. The most liked double, White Lilac.

Marc Micheli. Double, blue; the best in this color.

Mrs. W. E. Marshall. Single, of outstanding purplish crimson color.

Persian Lilac (Syringa Rothomagensis. Sometimes called Chinese and Rouen Lilac.)

Grows to a height of 10 to 12 feet and blooms in April and May. Blossoms purple, blooms well, and the special advantage of this lilac is that it does not make sprouts away from the bush. Therefore, it is preferred for hedges around gardens and lawns where the occasional sprouts of the Old Time Lilac are sometimes objectionable. Stands shearing well.

Persian Lilac, Prepaid:	1	3	10	25
12-18 inch.....	\$0.50	\$1.40	\$4.25	\$9.00
2-3 feet.....	.70	1.98	6.40	...

Hardy SPIREAS

Always
sure to
bloom



Even as young shrubs, Spirea Van Houtti produces a wealth of blossoms.

Spirea Van Houtti "Bridal Wreath" There is no other shrub which enjoys so much popular favor as the Bridal Wreath. Its height of 5 to 6 feet, that can be kept sheared if desired, fits in just perfectly on most places. For hedges, foundation planting, background to smaller shrubs or flowers, as well as for single specimens; few other shrubs fit in so well as this Spirea. May and June are the flowering time of the Spirea Van Houtti. Like huge snow-drifts, the branches of the shrub arching as if under the weight of the blossoms with which they are completely covered. Perfect hardiness, healthy growth, easiest of culture, make up the rest of desirable qualities all found in this shrub.

Pink Billardi Spirea For informal hedges, and wherever you need a medium sized flowering shrub you will find the Spirea Billardi satisfactory. Dense flower spikes of warm pink color, appearing in great abundance from middle of July all through August, it will be a valuable addition to your planting. Very hardy, requires practically no care.

Prepaid:	1	3	10
12-18 inch plants.....	\$0.35	\$0.95	\$2.90
18-24 inch plants.....	.48	1.30	3.70
2-3 ft. shrubs.....	.60	1.65	4.95

Snow Garland Spirea The earliest of the Spireas to bloom, usually about two weeks before the Common Bridal Wreath. Flowers snow-white, covering the entire shrub from ground level to the top with every branch a snowy mass of blossoms. The nice feathery foliage of the shrub remains decorative throughout summer. It grows about 4 feet tall, spreading very evenly.

Prepaid:	1	3	10
12-18 inch, nice plants....	\$0.40	\$1.10	\$3.30
2-3 ft. bushy shrubs.....	.60	1.65	4.90

Spirea Anthony Waterer Grows to a height of 2 to 3 feet, upright in growth, and in bloom almost throughout the entire summer with showy crimson flowers, arranged in flat umbels. It is practically ever-blooming, and hardy most anywhere except in the extreme North where it should have a mulch of straw or leaves over winter. Prefers a shady or partly shaded place.

Prepaid:	1	3	10
12-18 inch plants.....	\$0.40	\$1.10	\$3.30
18-24 inch nice shrubs....	.65	1.80	...

Prices of Spirea Van Houtti

Prepaid:	1	3	10	25
12-18 inch nice plants.\$...	\$0.55	\$1.45	\$3.45	
18-24 in. good shrubs..	.33	.85	2.50	4.90
2-3 ft. bushy shrubs ..	.45	1.20	3.40	7.40



When, during periods of dry weather, watering of shrubs or trees becomes necessary, take away a little soil, forming a shallow basin around each shrub or tree. Fill this with water two or three times. When the water has soaked away, level off with dry soil, which acts as mulch.

Please Order Early Regardless of labor shortage or war, it has always been a good plan to order nursery stock and seeds several weeks in advance of the planting time, giving your nurseryman a chance to reserve your stock, and getting it to you on time.



Climbing VINES

Perfectly Hardy

Boston Ivy The vine that clings to stone and brick walls. Does best on the north and east side of the building, gradually covering the entire wall or chimney. This is the only satisfactory plant to use on stone or brick walls without support. Nice plants, 55c each; 2 for 98c; postpaid.

Hall's Honeysuckle Hall's Evergreen Honeysuckle. Stays green almost up to Christmas, and in more southern locations practically through the winter. A very pretty vine, with clean, healthy foliage, and producing a wealth of creamy white blossoms in mid-summer; blossoms are fragrant. Grows about 12 to 15 feet tall; can also be used for ground-cover on steep banks. Nice No. 1 plants, 40c each; 2 for 72c, prepaid.

Scarlet Trumpet Honeysuckle Bluish green, odd-shaped foliage, and blossoms of scarlet-red color and trumped-shaped. Fragrant. Excellent for trellis and ground-cover. The plant is very hardy, and succeeds most anywhere. Nice 2-year plants, 40c each; 2 for 72c, prepaid.

Gold Flame Honeysuckle Note colored picture on front page. This is truly a wonderful plant, grows to full blooming size the first year, and blooms continually from mid-summer to late fall. Blossoms very showy, beautiful color, and fragrant. Should be in every garden. Strong No. 1 plants, 85c each; 2 for \$1.55; prepaid.

Silver Lace Vine (Polygonum auberti). By far the most rapid grower, easily covering a large trellis in one growing season, and blooming profusely from mid-summer to fall. Free from insects and foliage diseases. Hardy, and if in severe winters the vines do freeze back, the new growth in the spring will rapidly replace the lost vines, as the roots are perfectly hardy. 59c each; 3 for \$1.55; prepaid.

Chinese Wistaria This is a fast grower, with durable, healthy vines, resisting high winds on trellis work. It produces flowers of great beauty, although the vine has to be about three years old before it begins to bloom. Flowers come in large grape-shaped clusters of purplish-blue color. Foliage shiny green, clean, and free from diseases. Where a nice shady place is needed quickly in your garden, erect a small arbor of trellis work, let a pair of Chinese Wistaria cover it, and you will have that delightful little spot of rest and shade on a hot summer day. Our extra strong 2-year vines, 50c each; 2 for 90c; prepaid.

Virginia Creeper Woodbine. A native American vine, a strong, hardy, rapid grower with dark green foliage changing to showy red in autumn. The ideal vine to cover fence work, large tree trunks or hold the soil on very steep embankments. Extra strong 2-year-old plants, 25c each; 3 for 65c; 10 for \$1.90; prepaid.

Ampelopsis Engelmani Engelman's Ivy. Clings firmly to old tree trunks or trellis work. Retains an excellent foliage throughout summer and fall, and is very dense. Hardy everywhere, and requires practically no care after planting. 40c each; 2 for 70c; prepaid.

Bittersweet (Celeastrus scandens.) A native American vine with a pretty foliage, and bearing red berries in late summer and fall which cling to the vine until late winter. The twigs and berries are often used in winter bouquets. Two vines should be planted to assure pollenizing, and to get berries. Perfectly hardy; can be grown most anywhere. 2-year-old No. 1 plants, 2 for 75c, prepaid.

Trumpet Vine (Bignonia radicans.) A woody vine, which in later years, is strong enough to stand up without trellis support. Very hardy and long-lived, producing the well known extra large orange-scarlet trumpets in pretty clusters. Use this vine to cover unsightly spots, tree stumps, or for a stout grower where other vines do not have sufficient strength to stand up. Strong plants, 38c each; 2 for 70c; prep'd.

Beta Grape An extra hardy extremely strong and fast growth. It is often used for grape arbors or other trellis work requiring a permanent hardy climber. Produces an excellent fruit in abundance. See page 24.

Climbing Roses Please note the choice assortment of the best hardy climbing roses in existence, page 3.



Red, White and Blue CLEMATIS COLLECTION

1 Jackmani
1 Henryi
1 Mad. Ed. Andree

ALL CHOICE POTTED PLANTS
FOR EASY STARTING

for..... **\$2.65**

FREE: with this Collection,
1 Chinese Wistaria.



The large, star-shaped blossoms of the Clematis are extremely showy. Planting all three varieties on the same trellis, 2 feet apart, crossing the vines, brings out the "Red, White and Blue" in living colors.

Large Flowering CLEMATIS

Clematis Jackmani The purple-blue Clematis which is so very popular. Blossoms appear in great abundance, very large, star-shaped. Makes a beautiful trellis climber. 95c each; 3 for \$2.70; prepaid.

Clematis Mad. Ed. Andree Of all the large flowering Clematis, this is the best red variety. Blooms just as freely as Jackmani. For sure results plant our heavy potted Clematis. 95c each; 3 for \$2.70; prepaid.

Clematis Henryi The most perfect white Clematis, with large, star-shaped blossoms in great numbers. Plant more of these pretty trellis plants. They are hardy. 95c each; 3 for \$2.70; prepaid.

Trailing Periwinkle *Vinca Minor*, or *Creeping Myrtle*. Hardy, evergreen, grows to a beautiful dense ground cover about 6 inches high and spreads well. Very attractive in shady and semi-shaded places. 3 plants for 59c; 10 for \$1.65; prepaid.

**Small Flowering Clematis
Paniculata** Grows much faster and to larger size than the large flowering Clematis, however, the blossoms of this Clematis appear in clusters, are star-shaped, and much smaller than those of the other Clematis. Makes splendid plants on the arbor or other tall trellis work. No. 1 plants, 55c each; 3 for \$1.50; prepaid.

Perennial Sweet Pea *Lathyrus*. A rapid growing vine, blooming profusely throughout summer and fall. Flowers like regular Sweet Peas, ranging in color from apple-blossom pink to dark red. For ground-cover, fence cover, or low trellis work; a hardy, very pretty plant. 30c each; 3 for 80c; prepaid.

Madeira Vine Grows from a bulb, which is wintered in the cellar like potatoes. Planted in the spring it makes a very rapid growth, with dense, shiny foliage and fragrant white blossoms. For trellis and ground-cover. 5 bulbs for 60c, postpaid.

PLANTING INSTRUCTIONS

All climbing vines listed here will give good results in ordinary garden soil, to which fertilizer should not be added at planting time. Where the soil is not of the best quality, fertilizer (either commercial fertilizer or well-rotted manure) can be applied later on, preferably late in the fall, not touching the vines, but in a circle of about one foot around each plant. Whatever may be left of the fertilizer the following spring can be worked into the soil lightly when the soil around the plants is cultivated in early spring. For the large flowering Clematis, the east side of a building or partial shade is best. In a sunny location the soil should be mulched with wood-shavings through the summer, so as to keep the roots fairly cool.



America's Finest DAHLIAS

Complete Instructions on Planting and
Care of Dahlias with Every Bulb
Shipment.

Price of All Dahlias
unless quoted otherwise:

32c each POST
PAID

Delivery in first-class condition
guaranteed.

DECORATIVE DAHLIAS Extra Large Flowering, Highly Colored, Full Double to the Center. Extremely Showy.

Coquette Beautiful red and gold.

Bashful Giant Apricot glow with beautiful pink shading.

Rose Glory A very large, perfectly double Dahlia of a most appealing shade of rose-lavender. 45c each, postpaid.

Mrs. Geo. Le Boutillier The largest and best red of all Dahlias. Should be in every planting. Each, 49c, postpaid.

California Idol Finest light yellow, a new Dahlia. Each, 49c, postpaid.

SHOW DAHLIAS With Ball-Shaped Flowers, Perfectly Double to the Center. Should Be in Every Garden. For Bedding and Cut Flowers.

D. M. Moore Very dark red, nearly black stiff stems, fine cut-flower; very popular.

Yellow Duke Beautiful clear yellow.

A. D. Livoni One of the most popular pink Dahlias, showy; good cut-flowers.

POMPON DAHLIAS These Are the Miniature or Lilipt Dahlias Preferred for Cut Flowers for Their Pretty Shapes.

Snow Clad The prettiest white.

Golden Queen Deep yellow, the best in this class of Dahlias.

Gertrude A prize-winning crimson Pompon Dahlia, of pretty shape, and blooming very freely.

Flora Large, pure white, very double.

Kemp's White Wonder A most outstanding new, large white Dahlia. Each, 45c; 3 for \$1.20; postpaid.

Mrs. I. D. Ver Warner Very beautiful shade of orchid-lavender, large flower.

Jane Cowl Glistening bronze-buff and salmon shadings.

Blue River A new Dahlia, large double flowers, beautifully shaped, of dark lavender color. Each, 55c, prepaid.

Maude Adams Popular white with rosy blush.

Purple Ball Extremely showy, very double, and highly purple colored.

Bonnie Blue A fine, globe shaped double Dahlia of rare bluish color. Should be in every planting.

Fairy A true pink flower, double, well shaped; should be in every planting.

Orchid Lady Plant this beautiful orchid-lavender Miniature Dahlia for your autumn and late summer bouquets.

Each DAHLIA BULB...
 Packed and Labeled
 Guaranteed True to Name

Rain-Bow Colors
Dahlia
Collection

- 1 Mrs. Geo. Le Boutillier
- 1 Bashful Giant
- 1 Rose Glory
- 1 Kemp's White Wonder
- 1 Blue River

All 5, choice bulbs,
 true to name.....

\$1.48
 POST
 PAID

Pompon Dahlias make wonderful bouquets, and are offered in a wide range of colors. You will love them in your garden.



Hardy GARDEN LILIES

For this year we are offering a shorter assortment of Lilies than usually. The six Lily varieties offered below are all perfectly hardy, and are all sure bloomers. When you plant your Lily bulbs, cover them only about one or two inches deep, regardless of how deep they are planted. Fill in more soil as the new growth comes up.

The Royal Lily

Regal Grows to a height of 2½ feet, and blooms in June and July. A very showy, fragrant Lily, its waxy-white trumpets are larger than any other Lily, and appear in great abundance, the plant improving from year to year. Plant bulb 7 inches deep. Choice bulbs, 40c each; 3 for 95c; prepaid.

Red Russian

Also known as Bonfire Lily. Grows about 2 feet tall, with a good dense foliage, and produces its fire-red large blossoms in most showy clusters. Really the surest Lily to bloom, hardy everywhere, and requiring practically no care. Blooming time May and June. Plant bulbs 4 inches deep. Extra choice bulbs. 35c each; 3 for 85c; prepaid.

**A Bed of
 Hardy
 LILIES**

- 2 Regal
- 2 Red Russian
- 2 Red Coral
- 2 Giant Tiger

All 8 Bulbs
 for.....

\$1.95
 POST
 PAID

Giant Tiger

This Lily grows fairly tall, 3 to 3½ feet, under ordinary care, and blooms in August. Flowers appear in great number. This is the large flowering type with salmon-red flowers, spotted black. Hardy everywhere. No. 1 bulbs (plant 4 inches deep), 40c each; 3 for \$1.00; prepaid.

Red Coral Lily

A small, and very dainty Lily, reaching a height of about 20 inches, and producing a large number of waxy, deep scarlet blossoms in May and June. Very nice in your foreground planting. Plant 3 inches deep. Blooming size bulbs of this Lily are not very large, but sure to bloom. 35c each; 3 for 85c; postpaid.

Hemerocallis Mikado

Of the new introductions of beautiful Day Lilies, (Hemerocallis), this is the best of the year, for wealth of flowers and choice color of blossoms. Rich orange with deep mahogany-red throat, blooming through June and July. The blossoms appear on tall stiff stems, showy in the garden and bouquet. The plants gradually grow to dense clusters of freely blooming plants. Cover plants 2 inches deep. Nice plants, 65c each; 3 for \$1.80; postpaid.

Gladiolas

All large blooming-size bulbs

Special-Select, Labeled

Assorted Varieties: 6 for 65c; 10 bulbs, 95c; 25 for \$1.85; 50 for \$3.25; 100 for \$5.95; postpaid.



Whether you buy our assorted Gladiolas or our fancy mixed, they are all strictly of the large flowering type.

RED GLADIOLAS—the prize-winners of this year.

BAGDAD. Flowers of giant size, on large spikes; a beautiful old rose color.

DR. HOEG. A grand new Gladiola. Beautiful dark shiny red, always sure to bloom. Midseason.

FLAMING SWORD. Extra deep red, large flowers of perfect shape. Early.

MOROCCO. The darkest of all dark red Gladiolas.

RED PHIPPS. Dark rose-red; an excellent flower.

ROSA VON LIMA. Rosy-red, very pretty blossoms appearing in giant spikes. Midseason.

VIRGINIA. Intense scarlet, well formed blossoms.

PINK GLADIOLAS—The finest varieties.

BEACON. Salmon scarlet with cream throat; very choice, on tall spikes.

DREAM OF BEAUTY. Mid-season. American Beauty pink. A very desirable Gladiola.

PICARDI. Shrimp-pink, very popular.

YELLOW GLADIOLAS—new, choice types.

BIT O' HEAVEN. The new Gladiola with salmon to golden-yellow shadings. An outstanding new flower.

PRIMROSE PRINCESS. Light primrose yellow, very choice.

WHITE GLADIOLAS—the best for bouquets.

MAID OF ORLEANS. Early, large blossoms with creamy throat on tall stems. Very showy white.

CARMEN SYLVIA. Beautiful large snow-white.

SHIRLEY TEMPLE. Midseason. Beautiful ivory white on giant stems. One of the latest Gladiolas introduced.

LAVENDER, BLUE AND BROWN.

BLUE BEAUTY. Probably the newest Gladiola nearest to blue in existence. Very large. Midseason.

MARMORA. Lavender gray, giant spikes. Very choice.

PELEGRINA. Like deep blue velvet.

VAGABOND PRINCE. Mahogany brown on tall perfect spikes. Midseason.

Fancy Mixed

Containing only choice varieties. Bulbs of No. 1 blooming size, all strictly large flowering types, carefully mixed to contain all colors. 12 for 68c; 25 for \$1.20; 100 bulbs, \$4.40; prepaid.

Rainbow Collection

Virginia, Bagdad, Carmen Sylvia, Marmora, Bit O' Heaven, Picardi. Five bulbs of each, 30 in all.

\$2.20 postpaid

FREE with this Collection, 10 fancy Mixed Gladiolas.

Guarantee and Planting Instructions

Sonderegger's Gladiolas are guaranteed to be true to name, and to bloom if planted as follows: Dig the ground up deeply, plant 4 to 6 inches deep, in heavy soil not quite so deep, 6 inches apart. Plant in full sun, or partial shade. For extra large spikes a top dressing of Vigoro fertilizer will help. Keep the bed free from weeds, sprinkle frequently through dry weather. Take bulbs up in the fall.

Cannas

Sure to Bloom

A Canna bed with a border of Caladium (Elephant's Ear) in the center of a pool. Whether on the lawn or near the water, a planting like this is a beautiful sight throughout summer and fall.



Fancy Orchid Types . . . All Bulbs Labeled Fancy Top-Size Bulbs: 6 for 88c; 12 for \$1.48; 25 for \$2.75; p.p.

City of Portland. The most perfect pink Canna. Green foliage. Grows 4 feet tall.
Hungaria. Satiny pink. 3½ ft. Blooms well. Green foliage.
Red King Humbert. Orange scarlet. 4 ft. Leaves bronze red.
Richard Wallace. Canary yellow, grows 4 feet tall with green foliage. Very good.

The President. Glowing scarlet. 4 feet. Green leaves.
Statue of Liberty. Grows 6 to 7 feet tall, bronze foliage, blossoms blazing flame red.
Wyoming. Showy orange, very good. 5 feet. Strong bronze colored foliage.
Yellow King Humbert. Golden yellow, blotched red. 4 feet. Foliage green.

7 ft. round . . . Canna Bed

Center:	1 Statue of Liberty	\$1.98 Post-paid
1st Circle:	6 Red King Humbert	
2nd Circle:	6 Richard Wallace	
	6 Hungarian	
	19 Bulbs	

10 ft. round . . . Canna Bed

Center:	9 Statue of Liberty	\$3.95 Post-paid
1st Circle:	12 Wyoming	
2nd Circle:	6 Hungarian	
	6 Red King Humbert	
	6 President	
39 Bulbs		

Plant 18 inches apart, 4 inches deep. Water frequently. A sunny place gives best results. Take Canna bulbs up in the fall after frost, store in the cellar free from freezing.

Caladium-Elephant's Ear A beautiful foliage plant which grows from a bulb to full size in one season. The leaves take on immense sizes, resembling the ears of an elephant. The tropical appearance of this plant is ideal for a tall border around a Canna bed or other tall flowers, in groups on the lawn, or near a pool. The bulbs are taken up in the fall, as they are not hardy, and are stored like Cannas over winter. This plant will add a splendid touch to your garden. Plant 4 inches deep, water freely. Nice size bulbs, 38c each; 3 for \$1.00; postpaid.

Please Note
Bulbs, particularly Gladiolas, are as scarce this year as some fruit stock. Order early. We ship your bulbs at proper planting time. You can depend on top-quality bulbs, as we have had a favorable growing season. Plantings were limited last year because of shortage of help. You will get extra good quality, but you should order early to be sure your order can be filled.



Peren

Sonderegger
TREES AND SEEDS THAT GROW

Hardy Garden Flowers

Asters

Safe delivery guaranteed.

In Asters, too, we have discarded the late-blooming types formerly offered. The four Asters listed below are amongst the earliest to bloom, and include the widest possible color range.

Beechwood Challenger Grows to medium height, and the flowers of crimson-red color appear in great wealth from early fall until heavy frosts.

Blue Gem Of all blue Asters in cultivation, this is truly the best. Double with yellow center. Grows about 3 feet tall, and blooms from September to heavy frosts.

Harrington's Pink True pink, makes a beautiful bush 3 feet high, covered all over with blossoms throughout fall.

Red Rover Deep rosy-red flowers with golden centers. Buds bright red, blooms beautifully from September until late fall. The habit of the plant is a compact growth, about 2½ feet high.

Cushion . . .

Chrysanthemums

These are the Dwarf strains, growing in a perfectly even form to a cushion shape. Fine border plants, or for the rock garden.

Pink Cushion Blooms practically all summer until frost, and its blossoms are of beautiful shades of pink, orchid, and golden centers.

Red Cushion Pure fiery-red, a beautiful plant which will bloom for you over a long period.

Yellow Cushion Pure golden yellow, very brilliant, forming an even, compact cushion, often measuring 2 feet across.

Chrysanthemums bring bright lights in your fall garden. Our new strains of latest varieties will please you.

Chrysanthemum

We have discarded all the old-fashioned types, because in so many instances they bloomed too late. Our new assortment includes the earliest blooming types in existence.

Algonquin Grows about 20 inches tall, and is in full bloom by Mid-September. Blossoms very double, clear yellow.

Burgundy Height at blooming time, end of September, about 2½ feet. A fine flower in the garden or bouquet, of rich deep-red wine color.

Clara Curtis Single flowering, producing great masses of fragrant pink daisy-like blossoms, and growing to a height of about 2 feet. Very choice.

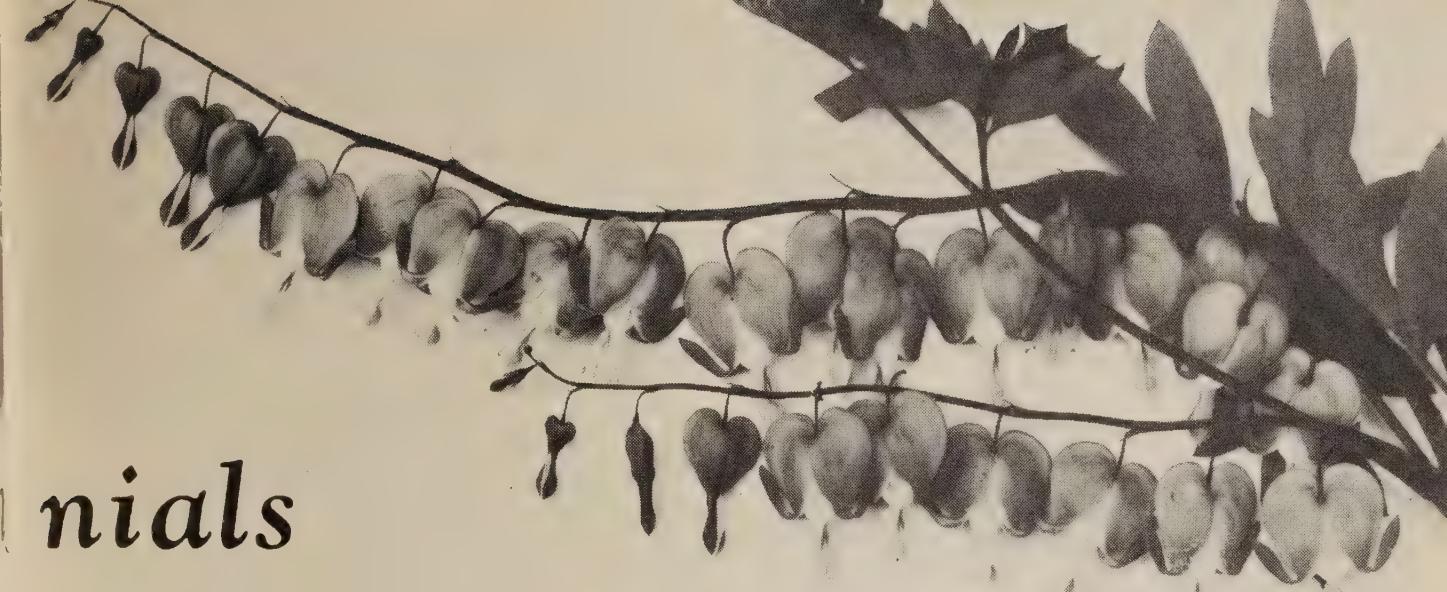
Dean Ladd Blossoms of a very pretty autumn color of reddish-bronze, are perfectly double, and are among the earliest to start blooming.

Mt. Rainier A very fine white variety, starts to bloom in early September. Grows about 20 inches tall. You will love this Chrysanthemum.

Rose Glow Raspberry rose-pink, begins to bloom in Mid-September, and branches out well at a height of 2 to 2½ feet.

Prices of all plants listed on page 52:

45c each; 3 for \$1.18, postpaid



nials

Special
Selection of
the Choicest Types

Baby's Breath The New Bristol Fairy, grafted plants. In the garden and in a bouquet, indispensable flower, the small double florets appearing in great number along the twigs and stiff branches form great sprays of white. The ideal bouquet material with other flowers. Blooms continually all through the summer. Height 2 feet. Each, 75c, postpaid.

Hardy Ferns . . .

Goldie's Wood Fern (Aspidium) Its beautiful fronds grow 2 feet tall, almost evergreen. Likes shade and good drainage of the soil. Each, 35c, postpaid.

Ostrich Plume Fern The tallest grower of the outdoor ferns, with graceful, finely cut pinnules, reaching a height of 3 feet. Each, 35c, postpaid.

Grasses . . .

. . . hardy ornamental types

Pampas Grass *Erianthus ravennae*, or Plume Grass. Grows to a height of 10 feet and more, and eventually throws up as many as 30 flower heads topped with silvery plumes. Each, 55c, postpaid.

Eulalia Zebrina The Zebra grass with its long leaf-blades marked crosswise with yellow stripes, and with its showy plumes, a very attractive plant. Height 6 to 8 feet. Each, 50c, postpaid.

Ribbon Grass *Phalaris*. Very hardy, a dwarf variety growing to a height of about 2 feet. Foliage very showy, white and green striped. In flower beds, for border planting to taller groups, and for general foliage effect, very satisfactory; requires little care. Each, 50c, postpaid.

Bleeding Heart See photo above. The old-fashioned type with the delicate heart-shaped flowers along gracefully arching branches. Blooms in May and June, and should be in every garden. Each, 72c, postpaid.

Hardy Violet . . .

Fry's Fragrant An old English strain which blooms early in the spring and again in the fall. Flowers extra large, deep purple, and very fragrant. A dainty border plant for your garden. Each, 39c, postpaid.

Rudbeckia - Cone Flower

The King Bears its large star-like deep crimson red flowers nobly on stiff stems. An established clump will produce from 10 to 20 fine spikes, never failing, hot or dry. From half-open buds to the orange-brown seed-pods, the plant is always very attractive. Height 3 feet. Each, 60c, postpaid.

Tuberose . . .

Mexican Extremely fragrant, the sure-blooming type. Grows 16 inches tall and blooms in September in long spikes of waxy-like blossoms. Plant the bulbs 4 inches deep, and late in the fall take the bulbs up for winter storage in the cellar, like Gladiolas. 3 Bulbs, 35c; 6 for 65c; 12 for \$1.15; postpaid.

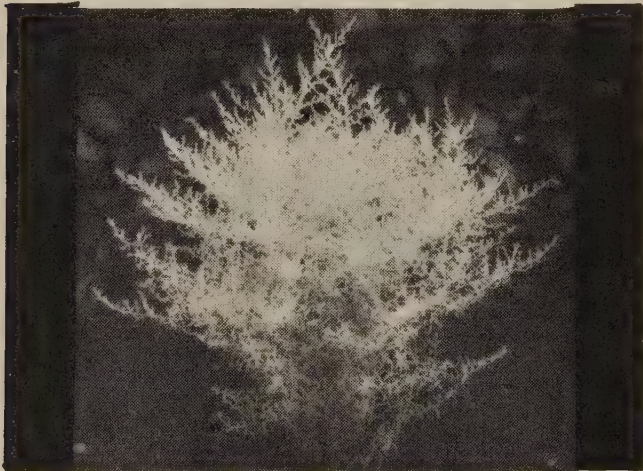
The Lovely . . .

Lily of the Valley

The hardy, fragrant plant, so well known in the shady places of old home gardens. 6 plants for 50c; 12 for 85c; postpaid.



Gaillardia Note picture above. Here is one of the most continually blooming plants for your garden, as showy in the flower bed as it is in your bouquet; and this new Monarch strain we are offering is of special large size. It grows to a height of about 2 feet and blooms throughout summer and fall in varied colors ranging from yellow to maroon. A strong robust grower, requiring very little care, and lasting for many years. Each, 35c; 3 for 90c; postpaid.



Artemesia, Silver King This is a hardy perennial growing to a dense bush form about 2 feet high, and can be kept lower by shearing. The silvery white twigs and foliage, compact growth, and extreme hardiness place this plant among the most attractive for color effect. Can also be planted in hedge style 12 inches apart in the row. Reaches full size in one season. 40c each, prepaid.

HARDY PERENNIALS

(Continued)

Forget-Me-Not Lovely flower, known to most everyone. Blue, of creeping habit. This is the Alpine strain growing about 8 inches tall and blooming through the greater part of the summer. Each, 35c; 3 for 90c; postpaid.

PYRETHRUM

Robinson's Dark Crimson Extra large blossoms of crimson scarlet color, borne on strong stems, for excellent cut-flowers. With its pretty foliage and great freedom of bloom it will be one of the flowers you will love. Each, 45c, postpaid.

Oriental Poppy The scarlet crimson type with black spots at base of the flower petals. The best for Memorial Day decorations. After several seasons of experimenting we are convinced that spring planting of Oriental Poppies is entirely too risky. For this plant we recommend only fall planting. We will be able to supply Oriental Poppies in the fall. The special new and improved types we will have at that time will be 35c each; 3 for 95c; postpaid.

HARDY PENTSTEMON

Garnet The first of a new strain of hardy, large-flowering Pentstemons. It is of spreading habit, growing 12 to 18 inches tall. From June until late frost in the fall it produces its showy flower spikes of rich garnet color. This Pentstemon is a beauty in your garden, and is also an excellent cut-flower. Each, 50c; 3 for \$1.35; postpaid.

HARDY SWEET PEA

Lathyrus A very satisfactory perennial climber, and generally used for low and medium sized trellis covers, for fence-climbers, or for ground-cover. It blooms with greatest freedom throughout the summer, in all color shades from rose-lilac to bright red. Easy to grow, and perfectly hardy anywhere. The flowers are just like those of the regular Sweet Peas. Each, 30c; 3 for 80c; postpaid.

YUCCA, ADAM'S NEEDLE

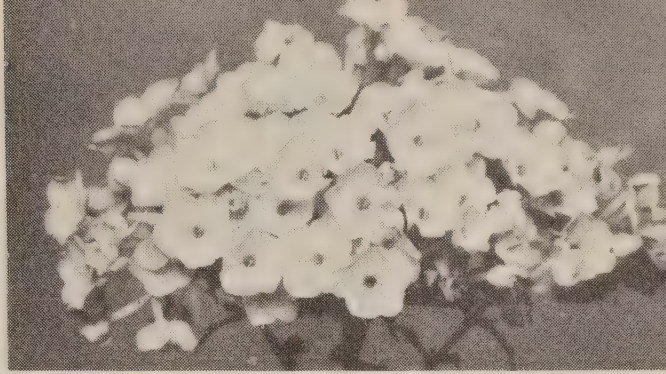
(*Yucca filamentosa*). A plant of tropical appearance, growing to a height of 3 to 4 feet, with a beautiful palm-like foliage which is evergreen. The blossoms of creamy white color come in large numbers on tall flower spikes, they are bell-shaped, and often have as many as 100 flowers on one stem. Blooms for several weeks in early summer. It does well on dry land, requires practically no further care. Wherever you need a plant of nice appearance the year around, for a place where few other plants would succeed, and where you cannot give it any care, this plant is highly satisfactory. Often used in Perennial back-grounds, parks and cemeteries. Extra strong plants, 40c each; 3 for \$1.00; postpaid.

HARDY CARNATIONS

King of Blacks This carnation is of the hardest strain of outdoor carnations, and with a mulch of leaves or straw through the winter, will succeed even in northern localities. Fragrant, blooms practically all summer. Color very deep maroon, and an excellent cut-flower. Each, 40c; 3 for \$1.10; postpaid.

Hardy Phlox

**Finest Colors
Sure to Bloom**



Augusta (Plant Patent No. 252). The finest cherry red Phlox ever introduced. Grows to a height of about 2 feet and blooms over a period of two months. This new Phlox should be included in your planting. Each, 50c, postpaid.

Caroline Van de

Berg A very large flowering type of Phlox and of very striking blue. The nearest to "blue" in the Phlox family known to date. A lovely flower, combining with its rare color the large size of the individual florets and large flower heads. 45c each; 3 for \$1.20; postpaid.

Columbia (Plant Patent No. 116). The delicate cameo-pink of this flower, with a faint blue shading at the center, has no equal amongst the Phlox for rare color combination. Blooms very freely from July to late fall, growing to a very nice, sturdy plant. Columbia will make a wonderful showing in your garden, and will please you. Each, 55c; 3 for \$1.45; postpaid.

America's Finest Phlox Collection

6 plants, all correctly labeled, one of each variety listed,

\$2.68
for POST PAID

Free:

With this Collection:

2 Red Russian Lily
Bulbs

blooming size,
easy to grow.

Hauptman Koehl

The large, compact trusses of this Phlox appear on strong stems, usually about 2 feet high. The glowing, full red color of the blossoms is the best red known in Phlox. Each, 45c; 3 for \$1.20; postpaid.

Mary Louise The choicest of all white Phlox. Pure white, individual florets unusually large, coming in very large flower heads, and they are fragrant. A very prolific blooming Phlox. 45c each; 3 for \$1.20; postpaid.

Royal Purple A decidedly beautiful Phlox of purple color, shaded very deep and rich at the edges, and shading to a violet color in the center of the flower petals, the very center being a deep reddish purple eye. 45c each; 3 for \$1.20; postpaid.

Phlox make the best showing if a bed of them is planted. Spaced about 12 to 16 inches apart, they make a blooming bed in a very short time, which will have that fine effect that can be had only from the colors of "massed planting." Little care is required for Phlox after the bed is started. A little winter-mulch of leaves or straw applied late in the fall is advisable for northern locations.



Sonderegger's Finest . . . SELECTION of FLOWER SEEDS

ALL PACKETS 5c UNLESS QUOTED OTHERWISE

ASTERS

799. **Giants of California.** Large double flowers with long curled petals growing on stems 1½ to 2 ft. long. Mixed colors. Pkt., 8c.
796. **Heart of France.** Beautiful deep ruby-red blooms, large and double, borne on extra long stems.
798. **Giant Branching Mixed.** Wilt resistant. A very free bloomer with large double flowers, broad petaled type.

SWEET ALYSSUM

832. **Little Gem.** The 4-inch plants are completely covered with snow white flowers. Wonderful for edgings.
834. **Violet Queen.** Compact plant 6 inches tall with deep lavender flowers. Nice with white alyssum. Pkt., 10c.

SNAPDRAGON

843. **Mixed Colors.** Rust-proof. They produce many spikes 18 inches high, closely set with large flowers which bloom all summer and fall.

AGERATUM

827. **Blue Cap.** Very dwarf and compact. Leaves are small and the plants appear like miniature domes completely covered with blue flowers.

BALSAM

864. **Mixed Colors.** Bushy plants with double flowers produced close to stem.

CANTERBURY BELLS

894. **Cup and Saucer.** An easily grown biennial with bell-shaped flowers.

CANDYTUFT

900. **Mixed Colors.** Hardy annual bearing many large spikes of flowers from early summer to frost.

CARNATION

906. **Sonderegger Double.** Large double flowers, sweet scented and fine for house culture. Pkt., 10c.
908. **Everblooming French.** Large double flowers of rich color which bloom in four months from seed. Pkt., 10c.

COCKSCOMB

915. **Empress.** Makes a very showy plant with its beautiful blood red combs.

COSMOS

943. **Orange Ruffles.** Vivid orange flowers with two or three extra rows of petals lend an airy butterfly beauty to the richly colored blossoms.
946. **Early Flowering.** Large single flowers of red, pink and white.
949. **Double Flowering.** Showy plants with large double flowers.
944. **Giant Sensation Dazzler.** A luscious shade of rich deep velvety crimson. The broad fluted petals slightly overlap, giving the flowers a very full appearance. Pkt., 15c.

GYPSOPHILA

1024. **Baby's Breath.** (Annual.) Graceful branching plants with clusters of delicate white flowers. Beautiful in bouquets with other flowers.

AQUILEGIA

847. **Mixed Hybrids.** Large attractively formed flowers with broad petals and beautiful long spurs. Plants are free blooming, vigorous growers, 2 to 3 feet tall. Pkt., 10c.

DAHLIA

952. **Dwarf Hybrids.** Early flowering, semi-double dahlias in a varied assortment of colors. Bushy plants 1½ feet tall. Pkt., 10c.

DAISIES

958. **Shasta.** Large white single flowers 4 to 5 inches across with small yellow centers.
960. **Giant Double Shasta.** The largest Shasta daisy, the double flowers are nearly 7 inches across and stems 2½ feet long. Pkt., 15c.

DELPHINIUM

968. **Tall Mixed.** Easily raised, quick growers and very free flowering; produces a wealth of large, double blooms on long stems.
972. **Wrexham.** Stately plants, with their large double flowers, closely set together, form spire-like spikes. Pkt., 10c.

DIANTHUS

997. **Special Mixed.** A splendid mixture of brilliantly colored sweet scented flowers. Dwarf, bushy plants 12 inches tall, free flowering and blooming from July until frost.

FORGET-ME-NOT

1009. **Chinese Blue.** Dwarf, compact growing free flowering plants. Prefers full sun. Flowers a very bright blue, so rare among annuals.

FOUR O'CLOCKS

1012. **Dwarf Mixed.** Showy plants, 15 inches tall. Sweet scented flowers of many colors. Pkt., 10c; oz., 25c.

GAILLARDIA

1017. **Burgundy.** Large shining wine-red flowers on long stems, from June until frost.

CLARKIA

1018. **Double Mixed.** Plants send up a mass of slender upright branches, with each branch covered almost its entire length with charming rosette-like flowers. Plants 2 feet high.

HELIOTROPE

1026. **King of the Black.** Its delightful fragrance and easy culture makes it a favorite in any garden. Plants 2 feet tall, with clusters of deep rich purple flowers.

HOLLYHOCK

1030. **Double Mixed.** A wide range of beautiful colors. Highly valued for background planting.

STRAW FLOWERS

1376. **Special Mixed.** Especially good for winter bouquets. Pick when one-third open and hang heads down in a dry place until thoroughly dry.

LANTANA

1048. **Mixed Colors.** Clusters of verbena-like flowers in shades of orange, yellow and pink.

SPIDER PLANT

966. **Pink Queen.** A tall and attractive plant with huge heads of delightful true pink flowers. Plants well branched, with airy foliage and blooming from June until frost.

MARIGOLD

1060. **Scarlet Glow.** Dwarf double flowers, open a deep scarlet and as they age, turn to a rich tangerine color. Early and a profuse bloomer. Plants 10 inches tall. Pkt., 10c.

1062. **Pot O' Gold.** A mass of intense dazzling gold flowers, on dwarf compact growing plants of about 10 to 12 inches in height. Pkt., 10c.

1063. **Butterball.** The dwarf mound like plants are literally covered with two-inch flowers of soft butter yellow, lightly tipped with maroon on the center petals. Early flowering. Pkt., 10c.

MIGNONETTE

1074. **Sweet Scented.** A well known, old-fashioned flower highly prized for its fragrance, either in garden or bouquets.

NASTURTIUM

1085. **Glorious New Hybrids.** Large double sweet scented blooms on long stems. A wide range of colors. Pkt., 10c.

1094. **Dwarf Mixed.** This mixture consists of the richest and most varied combination of colors. Pkt., 5c; Oz., 15c.

PANSY

1114. **The Viola.** Hardy perennial. Neat plant with small flowers which bloom profusely.

1107. **Swiss Giant.** Large flowers, perfectly round and many beautiful colors. Pkt., 10c.

1106. **Masterpiece.** Charming pansies with crinkled and heavily ruffled flowers of rich dark shades. Pkt., 10c.

1130. **Mixed Colors.** An excellent mixture of colors. Pkt., 10c.

PETUNIA

1147. **Royal Purple.** Large flowers of a deep purple color. Pkt., 10c.

1142. **Rose of Heaven.** Dwarf bushy plants with very bright and showy dark pink flowers. Pkt., 10c.

1151. **Flaming Velvet.** Large velvety blood-red flowers. Pkt., 10c.

1150. **Fluffy Ruffles.** Large ruffled and frilled flowers in a well balanced mixture of colors. Pkt., 15c.

PHLOX

1166. **Choice Mixed.** Well branched plants with large flower heads composed of many round petaled florets. Pkt., 10c.

1168. **Starred and Fringed.** Its very attractive with its fringed and pointed petals in a wide range of colors. Pkt., 15c.

PORTULACA

1200. **Single Mixed.** Brilliant colored blooms until frost. Like a hot, sunny place.

1202. **Double Mixed.** Flowers are like little roses of many brilliant colors. Pkt., 10c.

PYRETHRUM

1222. **Single Mixed.** Large daisy-like flowers in white, pink and red; blooming in June. Easily grown from seed.

ORNAMENTAL GOURDS

1454. **Mixed Varieties.** This special mixture of the large and small ornamental varieties is very interesting. Pkt., 5c; oz., 15c.

POPPIES

1198. **Oriental.** These gorgeous spring flowers, often 6 inches across, of vivid colors, may be left undisturbed for years.

1196. **Iceland (P.)** Gracefully fluted and soft textured flowers, carried on long wiry stems in a wide range of colors.

CHRYSANTHEMUM

940. **Mixed.** Flower profusely during summer and fall. Showy in the garden and fine for cutting.

TEN WEEKS STOCKS

1216. **Finest Mixed.** The large flowers and long stems of this variety make it especially desirable for cutting. Very early blooming. A wide range of colors. Pkt., 10c.

SALPIGLOSSIS

1230. **Large Flowering.** Gorgeous funnel shaped flowers of rich velvety texture in a wide range of attractive flowers. Plants 2 feet.

SALVIA

1233. **Bonfire.** Erect spikes of brilliant scarlet on plants 14 inches high. Pkt., 10c.

1234. **Blue Bedder.** Long spikes of showy deep blue flowers, splendid for garden display and cutting. Seed sown in May will bloom from July until frost. Pkt., 10c.

SCABIOSA

1236. **Double Mixed.** Their long stems and beautiful colored flowers make them very good for cutting.

SWEET PEAS

1316. **Spencer Hybrid Mixed.** Large flowering type and early blooming. Pkt., 5c; oz., 15c.

SWEET WILLIAM

1320. **Double Mixed.** Hardy perennial. The broad clusters of fragrant flowers have fringed petals. Pkt., 10c.

VERBENA

1323. **Spitfire.** Each plant bears 10 to 12 stems that are 15 inches long and can readily be used for bedding and cutting. Mammoth flowers of strong scarlet-rose color. Pkt., 10c.

1324. **New Mammoth.** Fine for beds and borders. Many vividly colored flowers all summer and fall.

ZINNIA

1353. **Howard's Giant Crested.** Blossoms are 4 inches in diameter, with a round cushiony center surrounded by broad guard petals. Magnificent shades of orange, yellow, rose and crimson. Pkt., 10c.

1354. **Double Liliput.** A fine mixture of the dwarf double Zinnias.

1352. **Giant Flowered Mixed.** A well balanced mixture of all colors which make a gorgeous showing.

1360. Giant flowered, white.

1362. Giant flowered, crimson.

1364. Giant flowered, bright pink.

1366. Giant flowered, violet.

1368. Giant flowered, yellow.

Above 5 varieties, 7c each, or 5 for 30c.

CLIMBING VINES

1416. **Mile-A-Minute Vine.** A rapid grower with fine foliage. Flowers creamy white with deep red centers.

1407. **Cardinal Climber.** The leaves are deeply notched which with the cardinal red flowers give this vine a beautiful effect. Pkt., 10c.

1414. **Cypress Vine.** A beautiful annual climber with fern-like foliage and graceful star-shaped flowers. Pkt., 10c.

MORNING GLORY

1432. **Pearly Gates.** Vigorous, fast climbing vines. Covered with lustrous white flowers from middle of summer until frost. Pkt., 10c.

1433. **Heavenly Blue.** Rapid growing vine with large bright sky-blue flowers.

1434. **Scarlett O'Hara.** Fast growing vine with dark green foliage and flowers of a dark wine-red color.

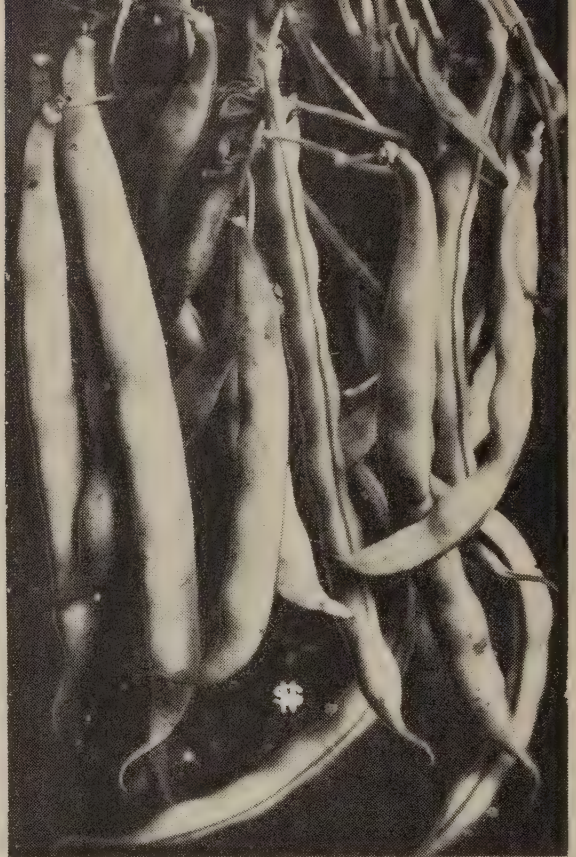
V For Health and Profit, Grow More Vegetables

Yellow Podded Varieties

A142. **Brittle Wax.** Plants vigorous, very productive. Pods medium round, extremely brittle, fleshy, stringless, free from fiber.

A155. **Pencil Pod Black Wax.** (52 da.). Plants large, stocky, good producer. Pods golden yellow, fleshy, tender and stringless. Finest quality.

A144. **Golden Wax.** (55 da.). An old standard variety. Plants bushy, very prolific. Pods 5 in. long, round, bright yellow, brittle and free from strings.

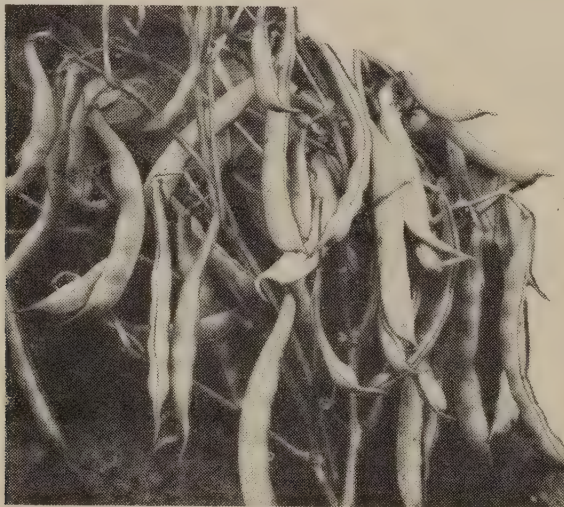


New Tendergreen

"Big 3" Bean Collection

- 1/2 lb. Sonderegger's Giant Stringless
- 1/2 lb. Pencil Pod Black Wax
- 1/2 lb. Burpee's Stringless

60c POST PAID



Brittle Wax

GREEN PODDED

A120. **Sonderegger's Giant Stringless Green Pod** (54 da.). One of the heaviest bearers. Pods long, round, dark green, stringless and of finest quality.

A126. **Burpee's Stringless.** Plants large, erect, very productive. Pods 6 in. long, round, stringless. Of excellent quality.

A134. **New Tendergreen.** (54 da.). One of the best green podded beans for the Middle West. Pods of dark green color, round, fleshy. Good bearer, excellent for canning.

LIMA BEANS

A154. **Henderson's Bush Lima.** An extra early butter bean of delicious flavor. Seeds bright green at eating stage and creamy white when dry. A heavy yielder.

POLE BEANS

A162. **Kentucky Wonder.** A very popular variety. An excellent climber, heavy producer. Bears green pods in large clusters, nearly round, often reaching 10 inches in length.

PRICES OF BEANS

No.	Variety	Pkt.	1/2 lb.	1 lb.	3 lbs.
A120	Sonderegger's Giant Stringless...	10c	22c	40c	\$1.10
A126	Burpee's Stringless Green Pod....	5c	22c	40c	1.10
A134	New Tendergreen	7c	22c	40c	1.10
A142.	Brittle Wax	10c	22c	40c	1.00
A144	Improved Golden Wax.....	5c	22c	40c	1.10
A154	Henderson's Bush Lima.....	5c	22c	45c	1.10
A155	Pencil Pod Black Wax.....	5c	22c	40c	1.10
A162	Kentucky Wonder, Pole Bean.....	5c	22c	45c	1.10

Safe Delivery of Shipment Guaranteed. Prices POSTPAID.

Planting Instructions

Plant beans after all danger of frost is over in rows, 12 to 15 inches apart, 1 1/2 lbs. of beans will be needed for a 100 ft. row. Pole beans may be planted against the garden fence for support.

PEAS

A488. Alaska (45 da.). The earliest of all peas. A splendid bearer. Pods $2\frac{1}{2}$ inches long, well filled with 5 to 7 peas. Good canning variety.

A490. Little Marvel (55 da.). A very dwarf sort, grows 15 inches high. Can be planted very early. Long pods with 5 to 7 peas of excellent quality.

A492. First and Best (50 da.). Plants 18 inches high, pods filled with 6 to 8 medium sized peas. Good bearer and excellent for canning.

A496. Laxton's Progress. The largest and best of the medium dwarf varieties. Vines 15 inches high and pods $4\frac{1}{2}$ inches long, deep green and well filled with dark green peas of excellent quality.

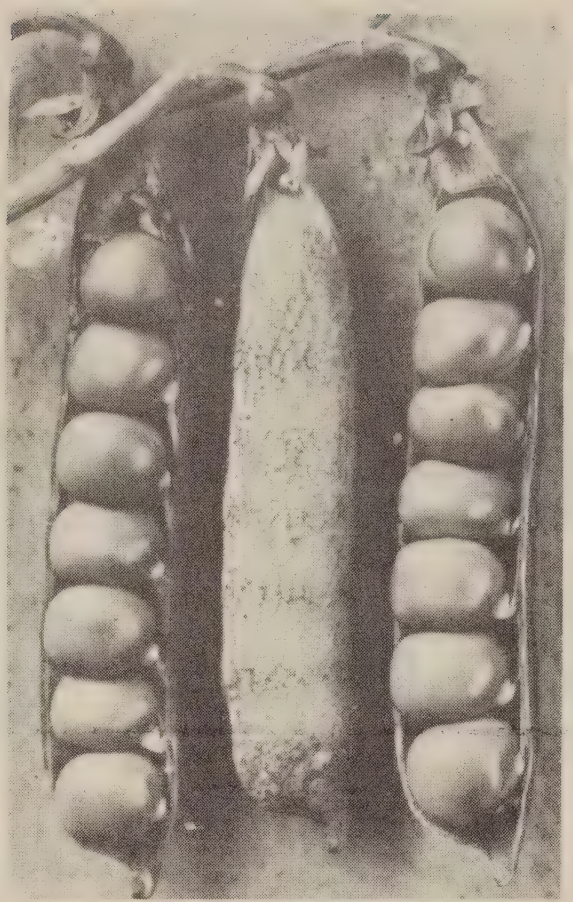
A497. Laxton Superb. One of the very best early large podded peas. It is of excellent quality, richly flavored, and the pods are packed with medium sized peas, usually eight in a pod. A heavy yielder and extremely desirable for canning.

A498. American Wonder. (52 da.). The earliest wrinkled variety. Grows 15 inches high, needs no brush. Pods well filled with large peas.

A506. Peter Pan. Best all around variety for the Middle West. Grows 18 inches high. Pods very large, filled with 6 to 8 very large sweet peas.

A512. Everbearing (60 da.). An excellent second early sort. Grows 20 inches high. Pods filled with large delicious peas, excellent for canning.

A518. Dwarf Gray Sugar. The best of all sugar peas. Very sweet, excellent quality. Pods medium size.



Little Marvel

"BIG 3"

Pea Assortment

$\frac{1}{2}$ lb. Alaska
 $\frac{1}{2}$ lb. Everbearing
 $\frac{1}{2}$ lb. American Wonder

60c POST PAID

Prices of Peas

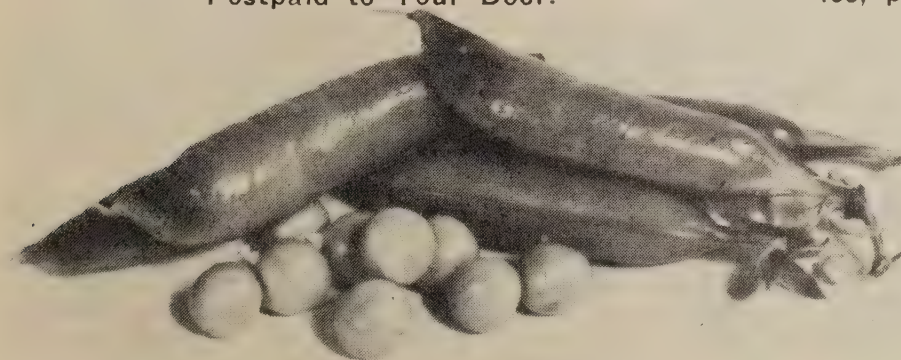
No.	Variety	Pkt.	$\frac{1}{2}$ lb.	1 lb.	3 lbs.
A488	Alaska	5c	23c	40c	\$1.10
A490	Little Marvel	5c	23c	40c	1.10
A492	First and Best	5c	23c	40c	1.00
A496	Laxton Progress	5c	25c	40c	1.00
A498	American Wonder	5c	23c	40c	1.10
A506	Peter Pan	7c	23c	40c	1.10
A512	Everbearing	5c	23c	40c	.95
A518	Dwarf Gray Sugar	10c	25c	45c	1.25
A497	Laxton Superb	10c	23c	40c	1.10

Postpaid to Your Door.



Treat all your Beans and Peas with Nitragin before you sow. You will get a better stand, a better crop, and

it improves the soil. Cannot be used except with the seed before sowing. Not good for any other kind of seeds. Garden size tin, enough to treat 4 pounds of seed, 10c, postpaid.



Laxton's Progress

Planting Instructions

Plant peas early as they require cool weather to do their best. Sow seed in rows not less than 18 inches apart, covering $1\frac{1}{2}$ to 2 inches deep. One pound will sow 100 feet of row.



Red Core Chantenay

CARROTS

A256. Sonderegger's Imp. Half Long (60 da.). The roots and flesh are of bright orange red color, of medium size and fine grained. Pkt., 10c; 1/2 oz., 25c; oz., 40c.

A254. Sonderegger's New Scarlet (70 da.). Best second early variety. The roots grow quite large, are of orange red color and excellent winter keeper. Pkt., 10c; 1/2 oz., 25c; oz., 40c.

A252. New Bunching. Main crop variety and for winter use. Roots 7 to 9 inches long, very symmetrical and smooth. Used extensively for market. Pkt., 10c; 1/2 oz., 25c; oz., 45c.

A260. Red Core Chantenay. The roots are smooth with blunt end. Their rich deep red color makes them a favorite with the housewife. Pkt., 10c; 1/2 oz., 25c; oz., 40c.

A264. Oxheart. A very short and stumpy variety. Extra early and of fine quality. Pkt., 5c; 1/2 oz., 20c; oz., 35c.

A261 Carrot Collection

1 Pkt. Sonderegger's Imp. Half Long

1 Pkt. Sonderegger's New Scarlet

1 Pkt. New Bunching

3 best

varieties.....

25c

POST PAID

BEETS

A179. Ohio Canner (65 da.). This new beet has a deep blood-red color, is tender, sweet and free from stringiness. Round and of uniform size. Pkt., 8c; oz., 35c.

A178. Sonderegger's Early Blood Turnip. One of the best for the Middle West. Round medium size, dark red color without light rings. Sweet and tender. Pkt., 8c; oz., 35c.

A201. Detroit Dark Red. (60 da.). Round, dark red, sweet and of excellent quality; does not lose color in cooking. Pkt., 8c; oz., 35c.

A180. Crosby's Egyptian. Roots are flattened in shape, of medium size, dark red, smooth and tender. Pkt., 5c; oz., 30c.

A192. Swiss Chard. Grown for leaves only, which are used as spinach. Produces immense quantities of light green leaves from spring until late fall. Pkt., 8c; oz., 20c.



Detroit Dark Red

"Big 3" Beet Collection

Sonderegger's Early Blood Turnip

Ohio Canner

Crosby's Egyptian

3 excellent sorts,

one pkt. of each

18c

POST PAID

SUGAR BEETS

A202. Klein Wanzleben Sugar Beet. A standard variety used in making sugar and syrup. Also for stock and poultry feed. Oz., 15c; 1/4 lb., 45c.

MANGEL BEETS

A198. Giant Half Sugar Mangel Beet. Extra sweet and large, of special high feed value for poultry and dairy use. On heavy soil I prefer this variety, as it grows shallow and is easy to harvest. Oz., 15c; 1/4 lb., 45c.

CABBAGE

- A222. Chinese Celery Cabbage.** Makes oblong solid heads, of excellent quality. Plant seed early July. Pkt., 10c; oz., 50c.
- A223. Golden Acre** (65 da.). This is the very best early round head cabbage. Very fine grained, sweet and juicy, solid heads 3 to 4 lbs. Pkt., 10c; 1/2 oz., 25c; oz., 45c.
- A224. Early Jersey Wakefield** (65 da.). This is our earliest and best pointed head cabbage. The heads are cone-shaped, very solid and tender. Weight 3 to 4 lbs. Pkt., 10c; oz., 40c.
- A226. Copenhagen Market.** Heads round, solid, of excellent quality. Medium early. Fine for sauerkraut. Pkt., 10c; oz., 45c.
- A227. Marion Market.** The heads are very uniform, of the Copenhagen Market type, making good early round heads. It is a yellow resistant variety. Pkt., 10c; oz., 45c.
- A236. Sonderegger's Improved Danish Ball-head** (100 da.). An excellent variety for late fall and winter use. Heads large, round, fine grained, sweet and juicy. Pkt., 10c; oz., 55c.
- A238. Premium Late Flat Dutch.** This is the largest and best of the flat head varieties. Best for late fall and winter use; good keeper; of excellent quality. Pkt., 10c; oz., 50c.
- A240. Savoy, King of Earliest.** Best of all sorts Savoy cabbage. Heads medium size, very solid and of excellent quality. Pkt., 10c; oz., 45c.
- A244. Mammoth Red Rock.** The finest, surest heading sort of red cabbage, of extra fine quality. Pkt., 10c; oz., 55c.

"Big 3" Cabbage Collection

Premium Late Flat Dutch
Early Jersey Wakefield
Marion Market

All three for..... **25c** POST PAID

CAULIFLOWER

A246. Sonderegger's Improved Earliest Dwarf. Heads uniform in size, of fine quality. I find this to be the best of all varieties for the Middle West. Pkt., 25c.

BRUSSELS SPROUTS

A118. Improved Dwarf. The miniature heads are very solid and most delicious. Culture same as cabbage. Pkt., 10c.

BORECOLE OR KALE

A110. Dwarf Green Curled. Tasty greens for early fall and spring use. Pkt., 8c.

A114. Tall Green Curled. This is the tall growing sort with green leaves. Quality much improved by fall frost. Pkt., 8c.

KOHL RABI

A342. Early White Vienna. An excellent vegetable with roots of fine quality. Grown above the ground. Cook same as turnips. Pkt., 8c.

PLANTING INSTRUCTIONS

Start all cabbage and cauliflower in hot-bed early in February. As soon as ground can be worked, transplant to garden, setting plants about 12 to 18 inches apart.

ONIONS

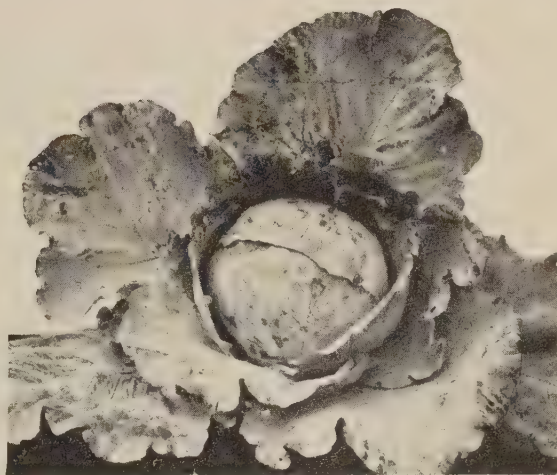
- A432. Sonderegger's Prizetaker.** Easy to grow from seed to medium size. Flesh pure white, finest quality, rather mild. Pkt., 15c; 1/2 oz., 45c; oz., 75c.
- A440. Yellow Globe Danvers.** White flesh, crisp and very good quality. Firm, solid bulbs; fine for storage. Pkt., 15c; 1/2 oz., 40c; oz., 75c.
- A442. White Sweet Spanish.** The pure white flesh of this onion is fine grained and exceptionally sweet. Pkt., 15c; 1/2 oz., 45c.
- A450. Yellow Bermuda.** A very large globe-shaped onion with mild, crisp flesh. A good keeper and fine for markets. Pkt., 15c; 1/2 oz., 50c; oz., 85c.

ONION SETS

	1 lb.	3 lbs.
A458. White	35c	\$1.00
A462. Yellow	35c	1.00
A464. White Multiplier	35c	...

Onion Set Prices—See Note Below.

- A472. Winter Onion Sets.** Plant them in the fall. The fall planted sets produce fine green onions in early spring. Per lb., 35c.
- A473. Bermuda Onion Plants.** Plant as soon as ground is warm. A very mild onion, when used as a green onion, or a large onion. Per bundle, 20c; 5 bundles, 85c.
- A346. Leek.** The large London variety. Mild; for flavoring soups, or cooked like creamed onions. Pkt., 25c.
- A748. Garlic.** Very pungent. Grown for seasoning. Large bulbs (break them up to sets), 5c; 1/4 lb., 15c; 1 lb., 45c.



Marion Market Cabbage

LIQUID SLUG SHOT

A non-poisnonous insecticide. It is the safest, most effective, easiest to use and most economical insecticide made. Can be used on cabbage, cauliflower, beans, etc., without fear of harm, as it does not contain poisonous ingredients. 1-oz. bottle, 35c; 4-oz. bottle, \$1.10; postpaid.

WATERMELONS

A404. **Tom Watson.** Extra long, tough but thin rind. Deep red flesh. Pkt., 5c; oz., 15c; ¼ lb., 30c.

A408. **Kleckley Sweet** (85 da.). Oblong shaped, dark green. Flesh dark red, very sweet, solid and stringless. Pkt., 5c; oz., 15c; ¼ lb., 25c.

A409. **Early Kansas** (85 da.). Large size, dark green with lighter stripes. Flesh bright red. Delightful flavor. Pkt., 7c; oz., 15c; ¼ lb., 25c.

A410. **New Striped Klondike** (90 da.). An extra large variety, light green, striped dark green. Good shipper. Flesh deep red, sweet and tender. Pkt., 7c; oz., 15c; ¼ lb., 30c.

A412. **Stone Mountain** (85 da.). Large, almost round. Flesh bright scarlet, sweet and crisp. Pkt., 7c; oz., 15c; ¼ lb., 30c.



New Striped Klondike

CUCUMBERS

A327. **Straight Eight.** The most desirable slicing cucumber you can plant. The straight symmetrical fruits grow about 8 inches long and 1½ inches in diameter. The color is a rich deep green. Pkt., 10c; oz., 25c; ¼ lb., 75c.

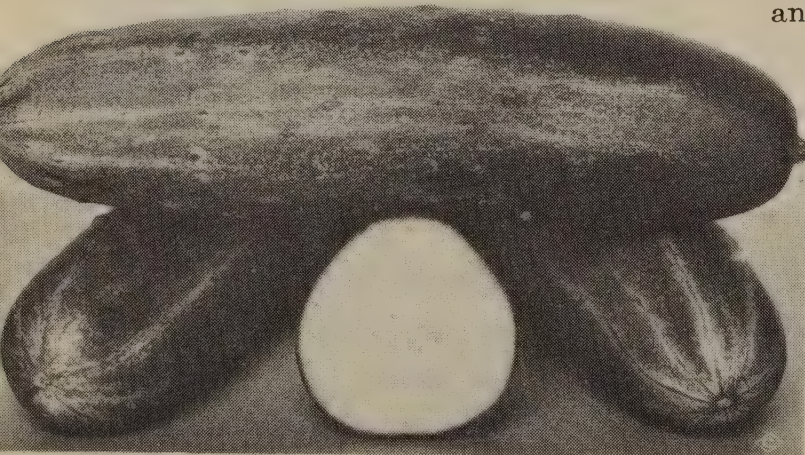
A324. **Improved Long Green** (70 da.). Makes delicious pickles when small. Crisp, of fine flavor, 9 inches long, dark green. Pkt., 8c; oz., 20c; ¼ lb., 65c.

A332. **Chicago Pickling** (58 da.). Special for pickles. Medium length, dark green color. Pkt., 5c; oz., 20c.

A320. **Davis Perfect.** An excellent mid-season variety. Fruits 9 to 10 inches long, 2½ inches thick, dark green color, tapered at both ends. Flesh crisp and of good quality. Pkt., 8c; oz., 20c.

A330. **New Everbearing.** A small early variety. Its outstanding feature is that the vines continue to bear throughout the growing season. Fruits short, slightly pointed and of superior quality. Pkt., 5c; oz., 20c.

A328. **Early Cluster.** Hardy vines bearing clusters of two and three. Short, thick, dark green cucumbers. Pkt., 5c; oz., 20c.



Straight Eight

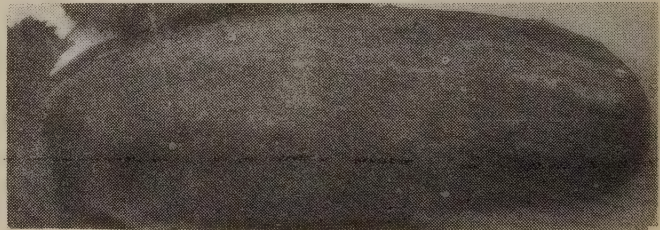
"Big 3" Watermelon Collection

Tom Watson

Early Kansas

New Klondike

ALL 3 FOR 15c POST PAID



Improved Long Green

HERBS

A696. **Dill Leaves and Seeds** are used in making dill pickles and for flavoring soups and sauces. Pkt., 5c.

"Big 3" Cucumber Collection

A325. **Davis Perfect, Improved Long Green, Chicago Pickling,** the three best for home garden. (Regular price 21c.) 17c, post-paid.

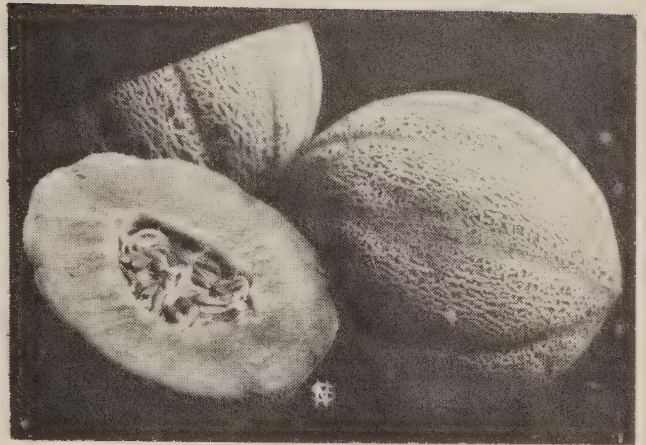
PUMPKIN

A538. Large Sweet Cheese (110 da.). Large flattened fruit that keeps well. Flesh yellow, thick and very tender. Pkt., 5c; oz., 10c; ¼ lb., 25c.

A544. Small Sugar. The favorite pie pumpkin. Fruits medium size of deep orange color with thick sweet flesh. Pkt., 5c; oz., 10c; ¼ lb., 25c.

A545. Winter Luxury. The shape is much like small sugar. The color is deep orange and the entire fruit is covered by a fine gray netting. It is one of the sweetest varieties and used chiefly for pies. Pkt., 5c; oz., 15c; ¼ lb., 25c.

A610. Cushaw. Always large, mottled green and white, solid and heavy. Fine grained and sweet. Also called squash. Pkt., 5c; oz., 15c; ¼ lb., 30c.



Sonderegger Earliest

"Big 3" Cantaloupe Collection

**SONDEREGGER'S EARLIEST
HEARTS OF GOLD
ROCKYFORD**

All 3 for **22c**



Winter Luxury Pumpkin

SQUASH

A603. Sonderegger's Table Queen. This is a small acorn shaped squash, smooth and very dark green in color with deep ridges. The flesh is very tender, deep yellow, and when baked and eaten from the shell is delicious. Pkt., 5c; oz., 15c; ¼ lb., 35c.

A604. Banana (110 da.). Cylindrical fruits usually 20 to 24 inches long and 6 inches in diameter. The skin is smooth and greenish gray with thin rind. The orange yellow flesh is firm and solid, free from fibre and of delicious flavor. Excellent for pies. Pkt., 8c; oz., 15c; ¼ lb., 35c.

A605. Early Prolific Straightneck. The fruits are 8 to 10 inches long, 2 to 2½ inches in diameter. It is long, slender, pear shaped with rounded tip, smooth and light yellow in color. Pkt., 5c; oz., 15c; ¼ lb., 30c.

A614. Warty Hubbard. Very dark green shell, hard and warty. Flesh tender and well flavored. Pkt., 5c; oz., 10c; ¼ lb., 25c.



Hearts of Gold



Sonderegger Giant Butter

RADISHES

A556. Sonderegger's White Icicle. An extra fine white long radish. It is mild and of very fine quality.

A553. Sonderegger's Giant Butter. A favorite variety for home gardens. Roots crimson in color with white, tender and juicy flesh. Will not get pithy.

A554. Sparkler. Deep scarlet with a pure white tip. The radish is solid, crisp and of very fine quality.

A555. Early Bird. Rich scarlet color, flesh snow white and crisp. A very early radish.

A568. French Breakfast. This is a well known oval-shaped radish of bright scarlet with white tip.

A580. Rose China (Winter Radish). Roots 4 to 6 inches long, bright rose-red in color. Flesh white and very firm.

A552. Saxa. It is one of the earliest radishes and slow to run to seed. The tops are very small, the radishes are round and bright scarlet.

PRICES OF ALL RADISH SEEDS

No.	Variety	Pkt.	Oz.	¹ / ₄ Lb.
A553	Sonderegger's Giant Butter	7c	20c	40c
A554	Sparkler	7c	15c	30c
A555	Early Bird	5c	15c	30c
A556	Sonderegger's Icicle.....	8c	15c	30c
A568	French Breakfast	5c	15c	30c
A580	Rose China	10c	15c	30c
A552	Saxa	5c	10c	25c

Postpaid, safe delivery guaranteed.

PARSNIPS

A480. Improved Guernsey (85 da.). Roots thick, of medium length, quality of this Parsnip is excellent, roots smooth, and fine grained. Very satisfactory for home use or market. Pkt., 8c; oz., 15c; ¹/₄ lb., 40c.

SALSIFY

A586. Oyster Plant. Makes a most delicious vegetable dish. May remain outdoors over winter. Culture same as carrots. For winter use store in sand in cellar. Pkt., 10c; oz., 25c.

PEANUTS

They do best in a light soil. Take them up, tops, peanuts and all just before frost in the fall. Allow them to dry out in the air. Plant in rows 4 feet apart.

A484. Mammoth Virginia. Most profitable variety to grow for home use or market, as the nuts are quite large. Plants grow erect. Pkt., 10c; 1 lb., 45c; postpaid. Not prepaid, 5 lbs., \$1.75.

"Big 3" Radish Collection

1 Pkt. Sonderegger's White Icicle

1 Pkt. Early Bird

1 Pkt. Sparkler

3 CHOICE RADISHES FOR **15c** POST PAID



Sparkler Radish

TOMATOES

A624. Beebe's Early Prolific. Medium to large globular shaped fruit. Flesh dark red, superb quality with very few seeds.

A626. Pritchard or Scarlet Topper. Extremely solid and heavy with thick walls of deep scarlet color. Very productive; one of the very best for home use or market.

A627. Firesteel. A small vine with medium sized red tomatoes that are early, smooth and firm fleshed. For dry seasons there is nothing to equal it as it will set fruit when other types are dropping their blossoms.

A628. Spark's Earliana. Large, fine quality. Stoutly bunched and very productive; fruit slightly flat, and red.

A629. New Marglobe. Second early on the market. Plants are vigorous growers and continue bearing until fall. Tomatoes large, round, smooth and of very dark color.

A632. Rutgers. Plant large with thick stems and vigorous foliage. Fruits globular, bright red, smooth with thick walls and small seed cells.

A640. New Stone. Large fruit, scarlet in color. Smooth and ripening evenly and without any cracks. For main crop.

A648. Yellow Pear. Small yellow pear-shaped fruit which is used mostly for preserving.

A652. Bison. Very early, of medium size and very solid. A strong grower and heavy bearer, resists drought extra well.

A654. The Ruby. The strong, healthy vines produce an enormous crop of medium to large size rich red tomatoes. The globe-shaped fruits grow in clusters of 6 to 10. Very solid and meaty.

"Big 3"

Tomato Collection

1 Pkt. Spark's Earliana

1 Pkt. Marglobe

1 Pkt. Pritchard

3 FAVORITES FOR **15c** POST PAID

Price of All Tomatoes

No.	Variety	Pkt.	1/2 Oz.
A624.	Beebe's Early Prolific.....	5c	25c
A626	Pritchard	7c	25c
A628	Spark's Earliana	5c	25c
A629	New Marglobe	7c	25c
A632	Rutgers	10c	25c
A640	New Stone	5c	25c
A648	Yellow Pear	7c	...
A652	Bison	10c	30c
A654	The Ruby	15c	...
A627	Firesteel	20c	...

EGGPLANT

A284. Spineless. A good bearing variety. The broad, oval, dark purple, glossy fruits are of superior quality. Pkt., 10c; 1/2 oz., 30c; oz., 50c.

BEATRICE, NEBRASKA

HOTKAPS

FROST can't hurt



INSECTS can't touch



Hotkaps not only make the young plants grow faster, but they protect them from frosts and insects. Hotkaps have been tried out for several years and we have many testimonials showing where Hotkaps produced ripe tomatoes two weeks earlier than where they were not used. More information given on request.

Home Garden Package, 25 Hotkaps and Cardboard Setter, 65c, postpaid; 50c not prepaid.

100 Hotkaps with Fiberboard Setter, \$2.35, postpaid.

250 Hotkaps with Fiberboard Setter, \$3.50, not prepaid.

1,000 Hotkaps only, \$10.25, not prepaid.

PEPPERS

A522. Sonderegger's New Royal. Extra thick flesh, juicy, sweet and very mild. Fine for stuffed peppers. Pkt., 10c; 1/2 oz., 25c.

A525. Harris Early. Earliest variety. Fruit medium size, dark red and very sweet. Pkt., 10c; 1/2 oz., 25c.

A532. Perfection Pimento. Thick meated, extra mild and delicious. Heavy bearer. Pkt., 10c; 1/2 oz., 25c.

A526. California Wonder. It produces smooth uniform fruits 4 inches in diameter and 5 inches long, mostly four lobed. The flesh is solid, thick, very mild and sweet. Pkt., 10c; 1/2 oz., 25c.

GARDEN HUCKLEBERRY

A521. Fruits small, about the size of a gooseberry, color a deep purple. Plant upright in growth. For preserves, cook with sugar and lemon. Pkt., 10c; 1/2 oz., 30c.



The Ruby Tomato



Golden Cross Hybrid

"We think ours a typical farm garden, grown with Sonderegger's seeds," writes Helen Ruyle, Filley, Nebr. "Out of our three rows of beans from 1/4 lb. of Burpee's Stringless Green Pod seed we have canned 66 quarts of green beans. Twenty Beebe's Early Prolific tomato plants, started in a box indoors, have produced three bushels of early slicing tomatoes. Little Marvel peas, lettuce and radishes planted early, we later cleared away and planted the ground to a second crop of muskmelons. Carrots, kohlrabi, lima beans, Swiss chard and New Zealand spinach do their share toward stocking our shelves with canned vegetables. I might add that though the windmill is located close to our garden, we have never found it necessary to irrigate the vegetables."

POP CORN

A309. Baby Jumbo. An improved variety of Dynamite with the hulls practically eliminated. A good producer, is of excellent quality. Oz., 5c; 1/4 lb., 15c; lb., 40c; 3 lbs., \$1.00; postpaid.

A311. Hybrid White Hulless. An extra heavy yielding variety. Hulless and of fine quality when popped. Pkt., 10c; 1/4 lb., 15c; lb., 45c; postpaid.

SWEET CORN

A292. Sonderegger's Early Golden (65 da.). After many years of selection I find this to be one of the best yellow varieties for this section. Stalks medium height, ears 7-9 inches long filled with sweet plump golden yellow kernels. Pkt., 7c; 1/2 lb., 20c; lb., 35c; 3 lbs., \$1.00; postpaid.

A305. Golden Cross Hybrid. Of all the yellow Hybrids I like this one best. Every stalk produces one or two medium sized ears filled with large golden yellow luscious kernels. Pkt., 8c; 1/2 lb., 30c; lb., 50c; postpaid.

A296. Sonderegger's Earliest (60 da.). The earliest of all large eared white seeded varieties. Ears are filled with deep grained pearly white kernels. Pkt., 5c; 1/2 lb., 20c; lb., 35c.

A304. Sonderegger's Early Evergreen (70 da.). This variety is very much like Stowell's Evergreen but 10 days earlier. Excellent quality, good canner. Pkt., 5c; 1/2 lb., 20c; lb., 35c; postpaid.

A308. Stowell's Evergreen. The standard main crop white sweet corn. Large ears, sweet and stay tender a long time. Especially fine for canning. Pkt., 5c; 1/2 lb., 18c; lb., 30c; postpaid.

A306. Country Gentleman. Very productive, kernels irregular, very deep, pure white and sweet. Ears 9 inches long. A very good variety. Pkt., 5c; 1/2 lb., 20c; 1 lb., 35c; 3 lbs., 90c; postpaid.

A307. Hybrid Stowell's (95 da.). A big eared, thrifty, high yielding white hybrid. It has an unusually rich, sweet flavor. Pkt., 10c; 1/2 lb., 25c; lb. 40c; postpaid.

"Big 3"

SWEET CORN COLLECTION

1/4 lb. Sonderegger's Early Evergreen

1/4 lb. Sonderegger's Early Golden

1/4 lb. Sonderegger's Earliest

Choicest Three for.....**25c** POST PAID



Vegetable Garden of Helen Ruyle.

LETTUCE

A350. Sonderegger Extra Early Head. Heads are of medium size, solid, round. This lettuce is rich in flavor, buttery, crisp and tender. Pkt., 10c; oz., 30c.

A352. Improved Hanson. A very reliable sure heading variety. Leaves large, broad and crimped, of light green color and fine quality. Pkt., 10c; oz., 25c.

A354. Sonderegger's Butterhead. Best all around lettuce, extra good for forcing and summer use. Pkt., 10c; oz., 25c.

A358. Prizehead. An early non-heading variety. The crumpled, crisp tender leaves are tinged brownish red. Pkt., 10c; oz., 20c.

A366. Early Curled Simpson. Leaves tender, sweet, of light green color, and excellent quality. A very early variety. Pkt., 10c; oz., 20c.

A367. Black Seeded Simpson. Quick growing variety. Outer leaves light green, crisp, of fine texture and exceptionally fine flavor. Pkt., 10c; oz., 20c.

A365. Oak Leaf. A novel salad lettuce. Shaped like an oak leaf, deep green color, exceptionally rich in vitamins, tender and of excellent flavor. Stands up well in hot weather, never turns bitter. Pkt., 10c; oz., 20c.

"Big 3"

Lettuce Collection

1 packet of each:

Early Curled Simpson

Sonderegger's Extra Early Head

Improved Hanson

All for **25c** POST PAID

ENDIVE

A286. Green Curled. Makes delicious fall and winter salads. Frost improves its flavor and quality. Pkt., 10c; oz., 30c.

A288. Broad Leaved Batavia. Large summer variety. Pkt., 10c; oz., 30c.

GARDEN CRESS

A218. Curled. Used for salads and garnishing. The curled leaves have a delightful flavor. Pkt., 10c.

MUSTARD

A378. Southern Giant Curled. Highly esteemed in the South where the seed is sown in the fall and the plants used early in the spring for salads. Pkt., 5c; oz., 10c.

BEATRICE, NEBRASKA

CELERY

A272. Sonderegger's Self Blanching. Medium height, stocky and very compact. Foliage yellowish green, stalks solid, broad and of delicate flavor. Pkt., 10c; 1/2 oz., 40c.

A274. Golden Self Blanching. Very early. Stalks solid, brittle and of delicious flavor. Pkt., 10c; 1/2 oz., 40c.

A282. Sonderegger's Best Celeriac. Large white roots, smooth, of excellent quality and flavor. Pkt., 15c; oz., 45c.

CELTUCE

A283. Celtuce. A new vegetable. It grows quickly from seed. The light green rosettes of young leaves makes delicious salads. Central stalk ready for use in less than 90 days, which may be eaten raw or cooked. Flavor is mild and delicious. Pkt., 5c.

PARSLEY

A474. Champion Moss Curled. Leaves extra large, deep rich green and very curly. Pkt., 7c; oz., 15c.

A478. Hamburg. Turnip-rooted; of this variety the roots as well as the tops are used. Pkt., 7c; oz., 15c.

OKRA

A380. White Velvet. Okra is delicious for stews, for flavoring soups, and for salads. It is easy to raise and yields immense crops. The pods are used when from 1 to 2 inches long. Pkt., 5c; oz., 10c; 1/4 lb., 25c.

TURNIPS

A662. Purple Top Strap Leaf. Flat, medium sized roots, purple top, fine grained and mild. Pkt., 5c; oz., 10c; 1/4 lb., 35c; lb., \$1.35.

A666. Purple Top White Globe. Firm, fine grained, white and of fine flavor. Pkt., 5c; oz., 10c; 1/4 lb., 35c; lb., \$1.35.

A676. Purple Top Yellow Rutabaga. Best yellow meated; good keeper. Pkt., 5c; oz., 10c; 1/4 lb., 40c; lb., \$1.45.

SPINACH

A594. Long Standing. The leaves are thick, round and of dark green color. Does not go to seed until late in season. Pkt., 10c; oz., 20c.

A596. New Zealand. Enjoy fresh, tender greens all summer. The more you cut the more it grows. Pkt., 10c; oz., 25c.

A592. Broad Leaf Nobel. The leaves are very large, thick, broad and slightly crumpled, arrow-shaped with a rounded top, are medium green in color, very crisp and tender. Remain in good condition for a long time. Pkt., 10c; oz., 20c.

TAMPALA

A597. Tampala. It is a delicious green vegetable, the leaves which are cooked and served like Spinach. Tampala is easy to grow. Sow seed outdoors any time after the ground becomes warm. It is ready to eat from six to eight weeks after sowing the seed. Pkt., 10c.

FANCY KENTUCKY BLUE GRASS

One pound of this seed will make a perfect stand on 200 square feet. Figure your seed on that basis. Spade the ground about 6 inches deep. Rake the ground. Now apply 3 to 4 pounds of Vigoro per 100 square feet. Rake again lightly. Wait from two days to a week before sowing. If there is no rain during that time sprinkle the soil. Sow, rake lightly, then roll to pack the ground. Apply a cover of fine cut straw, or better, of Peat Moss, soak the lawn down heavily. There is no substitute for this tested process. Per lb., 50c; 3 lbs., \$1.40; 5 lbs., \$2.25; postpaid.

TRI-OGEN

The All-Purpose Spray
A POSITIVE PLANT PROTECTION

This complete Rose Garden Spray Treatment—Tri-ogen—offers the first definite mildew and black spot control combined with an insecticide. It kills all insects, including the sucking and leaf-eating types. It remains on foliage, repelling subsequent attacks. Tri-ogen also stimulates plant growth, resulting in fine foliage and luxuriant bloom. A small kit (makes 16 quarts), postpaid, \$1.60.

POMO GREEN

Without nicotine. The new green fungicide for roses and other flowers and ornamentals; will control black spot, mildew and chewing insects. Ceiling prices: lb., 50c; 5 lbs., \$1.75; 25 lbs., \$8.00.

ROOTONE

A hormone powder easy to use, any one can apply safely, no skill is needed to apply Rootone, no measurements, no vials, no elaborate charts to follow, just dip and plant. 1/4-oz. pkg., 25c; 2-oz. jar, enough to treat 3,000 cuttings, \$1.00; 1-lb. jar will treat up to 30,000 cuttings, \$5.00.

NITRAGIN

This is not a fertilizer and must be applied to seed before planting. Nitragen can only be used on legume plants. It improves the root system and gives the plants a much better growth. For beans, peas and sweet peas, enough to treat 4 lbs. of seed, 10c. Soy beans and cow peas, 2 bu. size, 30c; 5 bu. size, 55c. For all clovers, alfalfa, also lespedeza, 1/2 bu., 30c; bu., 50c; 2 1/2 bu., \$1.00; postpaid.

ADMIRAL DUSTER

This new design Duster has been tried out and is a big improvement over the old type. It dusts all kinds of fine powders very evenly. It does the job with less materials, less energy, and does it better. Size of dust container 4 inches in diameter and 4 1/2 inches long. Pump 14 inches long. \$1.35, postpaid.

SONDEREGGER'S SPECIAL LAWN GRASS MIXTURE

Contains, in the proper proportion, the Fancy Kentucky Blue Grass and White Dutch Dwarf Clover, and a little Red Top, properly mixed so as to make a good even stand. Sow just like described under Fancy Kentucky Blue Grass, no difference in the care. Extra fine, choice seed, per lb., 58c; 3 lbs., \$1.65; 5 lbs., \$2.50; postpaid.

WHITE DUTCH CLOVER

Lb., \$1.15, postpaid.

VIGORO

VICTORY GARDEN FERTILIZER

Proper feeding with Vigoro Victory Garden Fertilizer will go a long way toward helping you produce big yields of vitamin-yielding, mineral-rich vegetables. Vigoro builds up the soil, gives it what plant life requires, a balanced ration of plant food. It's economical to use. 12-oz. pkg., 20c; 5 lbs., 65c; postpaid. Not prepaid, 5 lbs., 50c; 10 lbs., 85c; 25 lbs., \$1.50.

ELASTIC PRUNING PAINT

Should be used wherever a limb is cut off or where the bark has been peeled off by rabbits. Prevents decay until the wound is healed. Quart, \$1.00, postpaid.

HAMMOND'S SLUG SHOT

The safest, most effective, easiest to use and most economical insecticide made. Used on cabbage, cauliflower, beans, etc., without fear of harm. Lb., 35c; 5 lbs., \$1.30; postpaid. Not prepaid, lb., 30c; 5 lbs., \$1.00.



Control Garden Pests with this Quick, Easy, New Streamlined

HARCO
SPRAYER

Only \$2.35
Not Prepaid.
\$2.50 Postpaid.

FIELD SEEDS

As this catalog goes to press early in December, it is impossible to make prices of ALFALFA, CLOVER, GRASS, and other field seeds. We will have a complete stock of the very best field seeds. Write us for free samples and prices.

★ PATHFINDER

The Weekly News Magazine
For The Whole Family. Now
In Its 50th Year of Continu-
ous Publication From
Washington, The Nation's
Capital

52 WEEKS
now only
\$1.00

★HONEST ★IMPARTIAL ★ACCURATE

You get every week the latest in national and international developments. Keeps you up-to-date on the war. Our editors not only report the news, in brief, simple phrases, but give the background, story and significance of the more important events. Nothing flashy, nothing wild, no smart-aleck writing, no axes to grind. Every one in your family will want to be the first to read Pathfinder every week. Folks like it. You will too.

MAIL TODAY!

OTHER WEEKLY FEATURES YOU'LL LIKE

Under the Dome— Short, interesting, late items on what is happening in Washington that you want to know about. Right now Washington is the World's news center and the editors give you the news and facts behind the news. Always an important page to you.

Personalities— Lots of one- and two-paragraph human interest items with photographs to give a picture of modern America. News about people—some big people, some movie stars—but in the main, about average people, the ones who make America tick as a democracy.

For Women Folks— Something special every week of interest to women and girls—fashions, patterns, fancy work, home decorations, and usable practical household helps. The young folks also will get a lot of fun from brain teasers, puzzles, cartoons, and jokes.

WEEKLY PATHFINDER — BIGGEST \$1.00 VALUE.

Mail Coupon with \$1.00 (at our risk) for 52 weekly issues, to
PATHFINDER, Dept. C., Pathfinder Building, Washington 5, D. C.

Recommended by SONDEREGGER NURSERIES

If you are now a Subscriber, give this Valuable Coupon to a Friend who is not



READ PATHFINDER

Get the inside facts from Washington

NOW more than ever before you want to know what is happening, not only at the Nation's Capital, but all over the world. At this new low price of only \$1.00 a year, you can get all the important news, accurate, complete every week in **PATHFINDER**, America's Oldest News Weekly. Bigger issues, better paper, and all greatly improved. No liquor or objectional advertising.

52
WEEKLY ISSUES
Only \$1.00

PATHFINDER, Dept. C., Pathfinder Bldg., Washington 5, D. C.
I'm enclosing \$1.00 for Pathfinder one year, 52 WEEKLY ISSUES.

Name _____

R. F. D. _____ Box _____ or Street _____

P. O. _____ State _____

IMPORTANT: Mail direct to **PATHFINDER** with \$1.00 (at our risk). Offer good only in U. S.

See
Other Side

SPECIAL SELECTION FOR YOUR

● VEGETABLE GARDEN

GARDEN SEEDS DO NOT TAKE ANY POINTS

Every home-owner should have a war garden.

It pays big profits when you plant
Sonderegger Seeds.



CARROT, Sonderegger's New Scarlet. Pkt. 10c.



CUCUMBER, Straight-8. Pkt. 8c.



PEAS, Peter Pan. Pkt. 7c.

SWEET CORN, Golden Cross Hybrid
Pkt. 10c.



BEETS, Detroit Dark Red
Pkt. 10c.



BEANS, New Tendergreen
Pkt. 5c.



Abundant Crops

RED RASPBERRIES



LATHAM RASPBERRIES

Planting Instructions:

Both Raspberry and Blackberry plants should be set about 2½ to 3 feet apart in rows 5 feet apart. Plant in good soil containing no fresh fertilizer; cover the crowns about 1 inch deep but set deep enough so that another 2 inches of soil can be filled in after the new sprouts are 8 to 10 inches high. In midsummer when new growth is 2½ to 3 feet tall, pinch off ends of canes to promote branching.

CHIEF. This is the earliest of all red Raspberries, and for home use or market it is a grand producer of first-quality, large sweet berries. Ripens about 10 days earlier than Latham. With a mulch of straw over winter, these red Raspberries are hardy in the North. We recommend a mulch anywhere north of 40° latitude. Choice, well-rooted plants, 3 for 50c; 12 for \$1.80; 25 for \$3.50; 100 for \$13.00, prepaid.

LATHAM. This Raspberry is of the same high quality as Chief, and just as productive, but slightly later. For a longer season of ripe Raspberries we recommend planting both Chief and Latham. For the main crop and for canning, Latham stands in special favor with most growers. The very large, attractive dark red berries are freely produced and a favorite in any market. Plants come into production the year after planting and assure you of quick and abundant returns. Same price as Chief.

COLUMBIAN, PURPLE. The purple Raspberries are a little hardier than the red ones, and practically as good in flavor. Furthermore this variety does not make root-suckers; its growing habits are very much like those of the black Raspberries. For planting among other shrubs in the garden, where root-suckers are undesirable, use this Raspberry. It produces very well, and you will be well pleased with the splendid quality of the berries. Same price as Chief.

INDIAN SUMMER EVERBEARING. Produces a nice crop of large, sweet red berries of excellent quality in early summer and starts blooming and bearing again in September. It produces a handsome crop through the fall until frost. The plants are as hardy as Chief and Latham and they should be included in all plantings for fresh berries in the fall. Nice, well-rooted plants for quick results. 3 for 65c; 12 for \$2.20; 25 for \$4.00, prepaid.



PERFECTION CURRANTS

CURRANTS

2-YEAR SHRUBS

60c each; 3 for \$1.55; 10 for \$4.90, prepaid

PERFECTION. This is the largest of the red Currants and bears remarkably well. Berries bright red, not very sour, and with few seeds. For canning and jelly, Perfection has practically everything you could wish for in a good hardy Currant. For years it was the most widely planted variety, and still is the first choice of every planter who has grown it before. Hardy throughout the Midwest.

RED LAKE. This is a newer variety. Berries quite large, light red, with few seeds and very pleasing flavor. While Red Lake cannot surpass the productivity of Perfection, it is a little juicier, and is therefore preferred for fruit juices. It is also claimed that Red Lake is almost rust resistant. For home use, we suggest that both varieties be planted.

Proper Care of Currants

Gooseberries and Currants should have a little shade. Pruning is recommended for old Currant plants only; some of the oldest wood should be removed every year. This is done in late fall or early spring. Gooseberries should be pruned every summer. When the berries are ripe, cut out the bearing canes entirely.

FROM.....



Sonderegger
TREES AND SEEDS THAT GROW

SONDEREGGERS NURSERY

BEATRICE, NEBR.

BE SURE TO SIGN YOUR LETTER
AND GIVE FULL ADDRESS

from **BERRIES**

BLACK RASPBERRIES



CUMBERLAND. It can safely be said that this is the hardiest of all Raspberries. Black Raspberries are naturally hardier than the red varieties, and require practically no winter protection through the Midwest. In the North a protected place or a mulch of straw over winter can be recommended. Cumberland is a most reliable and abundant bearer, with large, black, very firm berries. Good for market as well as for the home garden. Does not make root-suckers. No. 1 plants, 3 for 45c; 12 for \$1.70; 25 for \$3.20; 100 for \$12.00, prepaid.

QUILLEN. In hardiness and in quality of berries there is very little difference between Quillen and Cumberland. It is claimed by the originator that the berries of Quillen will ripen a little more evenly. Market growers of berries through the corn-belt prefer this variety, and for them especially we are offering it. It does not make root-suckers. Same price as Cumberland.

BLACKBERRIES

ELDORADO. Because of its exceptional hardiness this is a very sure producer. Berries very large, shiny black, very sweet, and well flavored. To be at their very best, Blackberries should be planted in a fairly moist location. Selected, well-rooted plants, 3 for 45c; 12 for \$1.50; 25 for \$2.90; 100 for \$10.50, prepaid.

ALFRED. One of the newer Blackberries, originated in the North, and recommended for its special hardiness. Does not require winter protection anywhere. Alfred is slightly earlier than Eldorado; in production, size and quality of berries there is very little difference. Alfred is a strong grower and should be cut back to 2½ feet as soon as the new canes reach that height. This promotes better branching, and consequently heavier production the following year. Same price as Eldorado.



CUMBERLAND RASPBERRIES

Raspberry Collection for the Home

- 6 **Chief.** Early red.
- 6 **Latham.** Red.
- 6 **Cumberland.** Black.
- 6 **Indian Summer Everbearing.** Red.

FREE with this collection:
6 Alfred Blackberry bushes
All for **\$3.75** postpaid

GOOSEBERRIES

FOR PIES AND CANNING

OREGON CHAMPION. A strong-growing shrub, not very thorny. The green berries are of medium size and of the finest quality for pies and canning. For sure bearing and heavy crops you will find Oregon Champion of outstanding value. Very nice 2-year-old plants, 60c each; 3 for \$1.55; 10 for \$4.90, prepaid.

HOUGHTON. This is a very hardy, sweet Gooseberry, of reddish color when fully ripe; size of berries is small to medium. After a trial you will be convinced that any plant simply could not produce more berries. If the berries of Houghton were just a little larger, it would be unsurpassed in every respect. Our two-year-old plants will give you quick results. 60c each; 3 for \$1.55; 10 for \$4.90, prepaid.

... and Gooseberries

This makes room for new wood, which will bear the next year. Spray Currants and Gooseberries with arsenate of lead, 3 tablespoonfuls per gallon of water, just before blooming, immediately after blooming, or as soon as the leaf-worms appear, which in some localities attack the foliage.



OREGON CHAMPION GOOSEBERRIES

STRAWBERRIES

HOME GARDEN COLLECTION

- 50 Senator Dunlap
- 50 Premier
- 25 Fairfax
- 25 Gem Ever-bearing

\$3.70

POSTPAID



HEAVY PRODUCING STRAIN

HOW TO PLANT

Strawberries can be set out any time after the ground warms up. Space rows 16 inches apart in small plantings, 30 inches apart in larger ones. Spread roots out evenly. Do not cover plants so deep that the small center leaves are buried. Water each plant immediately.

JUNE-BEARING VARIETIES

SONDEREGGER'S PREMIER. The first to ripen of all June bearers. A heavy producer of extra-fine berries that ripen evenly and are very sweet. Not so good for long-distance shipping, as berries do not stay solid very long. Excellent in the home garden or near the market. 50 plants \$1.35; 100 plants \$2.35; 300 plants \$6.00, prepaid.

FAIRFAX. Probably the sweetest of all June-bearing Strawberries. Ripens between Premier and Dunlap. Berries large, bright red, ripening evenly to the core. We recommend Fairfax particularly for home use. 50 plants \$1.25; 100 plants \$2.25; 300 plants \$5.90, prepaid.

We ship Strawberry plants separate from trees or shrubs to assure their safe arrival. If plants reach you damaged in any way, please notify us by card promptly.

SENATOR DUNLAP. Midseason. The best-known and most widely planted Strawberry, for home use and market. Its quality, even size, productiveness, vigorous growth and extreme hardiness of the plants will please you. The berries are medium to large in size, of a dark crimson shade; quality and texture very fine. Sonderegger plants are young, well rooted and easy to start, assuring you of complete success. 50 plants \$1.10; 100 plants \$2.00; 300 plants \$5.50; 500 plants \$8.50, prepaid.

EVERBEARER

GIANT GEM. Berries exceptionally sweet, glossy red and red-meated, large and firm. Very hardy, and resistant to foliage diseases. Will make you a nice crop in June and again in the fall. 50 plants \$2.25; 100 plants \$4.10, prepaid.